

Research article

Open Access

Disease-associated pathophysiologic structures in pediatric rheumatic diseases show characteristics of scale-free networks seen in physiologic systems: implications for pathogenesis and treatment

Mark Barton Frank*¹, Shirley Wang², Amita Aggarwal³, Nicholas Knowlton¹, Kaiyu Jiang², Yanmin Chen², Ryan McKee², Brad Chaser², Timothy McGhee^{2,4}, Jeanette Osban¹ and James N Jarvis²

Address: ¹Microarray Research Facility, Arthritis and Immunology Program, Oklahoma Medical Research Foundation, Oklahoma City, OK, USA, ²Pediatric Rheumatology Section, University of Oklahoma College of Medicine, Oklahoma City, OK, USA, ³Clinical Immunology, Department of Immunology, Sanjay Gandhi Postgraduate Institute of Medical Sciences, Lucknow, India and ⁴The University of Alabama, Tuscaloosa, AL, USA

Email: Mark Barton Frank* - bart-frank@omrf.org; Shirley Wang - shirley-wang@ouhsc.edu; Amita Aggarwal - aa.amita@gmail.com; Nicholas Knowlton - nicholas-knowlton@omrf.org; Kaiyu Jiang - kaiyu-jiang@ouhsc.edu; Yanmin Chen - yanmin-chen@ouhsc.edu; Ryan McKee - ryan-mckee@ouhsc.edu; Brad Chaser - brad-chaser@ouhsc.edu; Timothy McGhee - mcghe015@bama.edu; Jeanette Osban - jeanette-osban@omrf.org; James N Jarvis - james-jarvis@ouhsc.edu

* Corresponding author

Published: 23 February 2009

Received: 17 April 2008

BMC Medical Genomics 2009, 2:9 doi:10.1186/1755-8794-2-9

Accepted: 23 February 2009

This article is available from: <http://www.biomedcentral.com/1755-8794/2/9>

© 2009 Frank et al; licensee BioMed Central Ltd.

This is an Open Access article distributed under the terms of the Creative Commons Attribution License (<http://creativecommons.org/licenses/by/2.0>), which permits unrestricted use, distribution, and reproduction in any medium, provided the original work is properly cited.

Abstract

Background: While standard reductionist approaches have provided some insights into specific gene polymorphisms and molecular pathways involved in disease pathogenesis, our understanding of complex traits such as atherosclerosis or type 2 diabetes remains incomplete. Gene expression profiling provides an unprecedented opportunity to understand complex human diseases by providing a global view of the multiple interactions across the genome that are likely to contribute to disease pathogenesis. Thus, the goal of gene expression profiling is not to generate lists of differentially expressed genes, but to identify the physiologic or pathogenic processes and structures represented in the expression profile.

Methods: RNA was separately extracted from peripheral blood neutrophils and mononuclear leukocytes, labeled, and hybridized to genome level microarrays to generate expression profiles of children with polyarticular juvenile idiopathic arthritis, juvenile dermatomyositis relative to childhood controls. Statistically significantly differentially expressed genes were identified from samples of each disease relative to controls. Functional network analysis identified interactions between products of these differentially expressed genes.

Results: *In silico* models of both diseases demonstrated similar features with properties of scale-free networks previously described in physiologic systems. These networks were observable in both cells of the innate immune system (neutrophils) and cells of the adaptive immune system (peripheral blood mononuclear cells).

Conclusion: Genome-level transcriptional profiling from childhood onset rheumatic diseases suggested complex interactions in two arms of the immune system in both diseases. The disease associated networks showed scale-free network patterns similar to those reported in normal physiology. We postulate that these features have important implications for therapy as such networks are relatively resistant to perturbation.

Background

Genome-based technologies provide us with an unprecedented capacity to understand complex biological systems and their relationship to health and disease. This is especially true for complex biological traits (e.g., atherosclerosis, hypertension), which have largely eluded our understanding using conventional, reductionist approaches. Indeed, even single-gene traits have demonstrated previously unsuspected levels of complexity when scrutinized through the lens of whole-genome technologies [1-3]

Chronic inflammatory diseases such as rheumatoid arthritis (RA) and juvenile dermatomyositis (JDM) are examples of human diseases whose etiologies and pathogenic mechanisms remain incompletely understood. Once thought to be purely "autoimmune" diseases triggered by a breakdown of the mechanisms that distinguish "self" from "non-self," it is becoming increasingly clear that these diseases involve complex interactions between the adaptive immune system (where these distinctions are made and immunologic memory is "stored") and the innate immune system (the parts of the immune system that do not require prior antigen exposure for optimal function) [4,5]. We therefore had begun to investigate these diseases from a systems biology approach, in which multiple relevant biological/pathological pathways can be queried simultaneously and their changes observed, defined, and modeled [6,7].

Until recently, there were no biomedical tools available to facilitate taking this approach. Advances in miniaturization and robotics have made this approach feasible, providing the opportunity to address critical questions of pediatric rheumatic disease pathogenesis, diagnosis, prognosis, and identification of targets of therapy in this "global" way. This understanding, in turn, is critical to our understanding the disease and our translation of that understanding into clinical practice. Of the available genome-wide technologies, gene expression microarrays are in the most mature phase of development, allow the most rigorous level of independent corroboration, and show the greatest promise for rapid translation into the clinical sphere [8].

One of the potential strengths of the currently available systems biology tools is the capacity to identify pathologic networks that underlie disease phenomena. Specifically, gene expression profiling has the capacity to do more than generate lists of differentially expressed genes; it provides an opportunity to observe gene regulation across the genome for patterns associated with health and disease. The current study was aimed at testing the feasibility of using gene expression profiling as a first step in understanding the structure of pathogenic networks in a family

of illnesses collectively called *childhood onset rheumatic diseases*, particularly those diseases that are unique to childhood: juvenile idiopathic arthritis and juvenile dermatomyositis. Our findings have important implications to both our understanding of disease pathogenesis and to development of new therapies for these perplexing diseases.

Methods

Patient populations and control subjects

All human subject involvement in this study was reviewed and approved by the University of Oklahoma Health Science Center Institutional Review Board. As a proof-of-concept for the use of gene expression profiling and *in silico* modeling to identify pathologic and interconnecting structures, we studied two pediatric inflammatory diseases of diverse phenotype.

Juvenile idiopathic arthritis (JIA)

Children with this disease present with joint inflammation and synovial proliferation. Children in this study (12 females and 2 male; ages 3 – 13 years) were limited to those who fit criteria for the polyarticular, rheumatoid factor-negative subtype as defined by the International League Against Rheumatism [9]. All children had active disease as defined by consensus criteria developed by Wallace *et al* [10].

Juvenile dermatomyositis (JDM)

Children with juvenile dermatomyositis present with insidious onset of weakness and display a characteristic rash. Histopathology of affected muscle shows a distinct vasculitis and perivascular infiltrate composed primarily of lymphocytes and monocytes [11]. Children in this study (9 females and 8 males; ages 7 – 18 years) all fit criteria for diagnosis as established by Bohan and Peter [12] and had active disease at the time of study.

Pediatric controls

Children undergoing elective surgery for non-inflammatory conditions (e.g., removal of an orthopedic appliance, cosmetic surgery for pectus excavatum, etc; 9 females and 2 males, ages 7 – 18 years) were used as controls for this study. Screening questions excluded children with past histories of arthritis and/or muscle inflammation and children with first degree relatives with systemic lupus, rheumatoid arthritis (adult or childhood onset) or inflammatory muscle disease. Blood specimens from control children were handled in a manner identical to the handling of patient specimens.

Specimens and processing

Following the execution of the informed consent process as approved by the University of Oklahoma Health Sciences Center (OUHSC) Institutional Review Board, 20 mL

of whole blood was drawn into sterile sodium citrate tubes containing a cell density gradient (BD Biosciences Vacutainer® CPT™ Cell Preparation Tube, # 362761, San Diego, CA, USA) and carried immediately to the Pediatric Rheumatology Research laboratories on the OUHSC campus. Granulocytes were immediately separated from mononuclear cells by density gradient centrifugation. Centrifugation was performed at room temperature. Mononuclear cells were removed from the density gradient interface and placed immediately in TRIZOL® Reagent (Invitrogen, Carlsbad, CA, USA). Granulocytes and red cells layered in the bottom of the tube were separately collected. Red cells were removed from the granulocytes by hypotonic cell lysis as recommended by the manufacturer, and granulocytes were placed immediately in TRIZOL® reagent for RNA purification. This method has been shown to provide the least amount of artifact in neutrophils prepared for microarray analysis [13,14].

Microarray platform

Affymetrix human U133 Plus 2.0 GeneChip® microarrays were used for all samples (Affymetrix, Inc., Santa Clara, CA). This platform contains oligonucleotides representing approximately 47,000 transcripts, including alternative splice variants of selected mRNAs.

RNA purification, labeling, hybridization, and scanning

Total RNA extractions from Trizol® reagent were carried out according to manufacturer's directions. RNA was further purified by passage through RNeasy mini-columns (QIAGEN, Valencia, CA) according to manufacturer's protocols for RNA clean-up. Final RNA preparations were suspended in RNase-free water. RNA was quantified spectrophotometrically. RNA integrity was assessed using capillary gel electrophoresis (Agilent 2100 Bioanalyzer; Agilent Technologies, Inc., Palo Alto, CA, USA) to determine the ratio of 28s:18s rRNA in each sample. A ratio greater than 1.0 was used to define samples of sufficient quality, and only samples above this limit were used for microarray studies. Four samples from neutrophils obtained from controls, 2 samples from PBMC obtained from controls, 1 sample from PBMC obtained from patients with JIA, and 1 sample from PBMC obtained from a patient with JDM were excluded from the study for this reason. No statistically significant differences in RNA quality were found within cell types between patients and controls. cDNA synthesis, hybridization and staining were performed as specified by Affymetrix (Santa Clara, CA). Briefly, 5 µg of total RNA was primed with T7-oligo-dT and reverse transcribed with SuperScript II, followed by production of double-stranded cDNA with *E coli* DNA polymerase. cRNA was transcribed *in vitro* from the T7 promoter using a biotinylated ribonucleotide analog and then fragmented to approximately 100 nt. cRNA was hybridized to Affymetrix GeneChips described above, and

then washed and stained using an Affymetrix automated GeneChip® 450 fluidics station. Microarrays were scanned with an Affymetrix 3000 7G scanner.

Statistical analysis

Data pre-processing was performed in the R/Bioconductor Package, "Affy". The raw Affymetrix perfect match probes were normalized by the RMA method combined with median-polish [15]. The marginal data distributions were adjusted through quantile normalization. The resulting normalized values were imported into BRB ArrayTools (Biometric Research Branch, National Cancer Institute) where they were then log transformed. Genes were filtered using the "Log Expression Variation Filter" to screen out genes that are not likely to be informative, based on the variance of each gene across the arrays. In this case, the filter was set to exclude genes that fell below the 50th percentile of gene variance. We identified genes that were differentially expressed between the two classes by using a multivariate permutation test [16,17]. We used the multivariate permutation test to provide a p value < 0.001. The test statistics used were random variance t-statistics for each gene [18]. Although t-statistics were used, the multivariate permutation test is non-parametric and does not require the assumption of Gaussian distributions. Data were exported to Excel (Microsoft, Redmond, WA) where averages of the classes were used to calculate expression ratios. Genes that simultaneously were differentially expressed (p < 0.001), a between class ratio of 1.8-fold or larger, and minimum normalized average intensity > 64 units in at least one group were retained for further analysis. Unsupervised hierarchical clustering of both samples and genes was performed in Spotfire (Sommerville, MA) after z-transformation of the data using Ward's minimum variance method [19]. Differences between cluster groups will be tested through a Chi-Square test. A p-value less than 0.05 was considered statistically significant.

Reverse transcription – quantitative real-time PCR validation

Four differentially expressed genes in JIA patients relative to controls were tested using quantitative real-time PCR, namely prostrate acid phosphatase (ACPP), CUG triplet repeat RNA binding protein 2 (CUGBP2), coagulation factor XIII A1 polypeptide (F13A1), and cortactin (CTTN). The human glyceraldehyde 3-phosphate dehydrogenase (GAPDH) gene was used as an internal control. For JDM, myeloid cell leukemia sequence 1 (MCL1), proteasome 26S subunit, non-ATPase 7 (PSMD7), CD160, granzyme K (GZMK), and v-myb myeloblastosis viral oncogene homolog (avian)-like 1 (MYBL1) were tested. Total RNA was isolated as described above. Primers were designed with a 60°C melting temperature and a length of 9–40 nucleotides to produce PCR products with lengths between 50–150 bp using Applied Biosystems' Primer

Express 2.0 software (Applied Biosystems Inc., Foster City, CA). First strand cDNA was generated from 1.8 µg of total RNA per sample using OmniScript Reverse Transcriptase according to manufacturer's directions (QIAGEN, Valencia, CA). cDNA was diluted 1:20 in water. PCR was run with 4 µl cDNA template in 20 µl reactions in duplicate on an ABI SDS 7000 using the ABI SYBR Green I Master Mix and gene specific primers at a concentration of 0.2 µM each. The temperature profile consisted of an initial 95°C step for 10 minutes, followed by 40 cycles of 95°C for 15 sec, 60°C for 1 min, and then a final melting curve analysis with a ramp from 60°C to 95°C over 20 min. Gene-specific amplification was confirmed by a single peak using the ABI Dissociation Curve software. Average Ct values for GAPDH (run in parallel reactions to the genes of interest) were used to normalize average Ct values of the gene of interest. Relative Δ Ct was used to calculate fold-change values between groups.

Pathway analysis

Pathways were generated by placing only statistically significantly differentially expressed genes with a minimum 1.8-fold difference between groups into Ingenuity Pathways Analysis (Ingenuity Systems®, Redwood City, CA). Each Affymetrix gene identifier was mapped to its corresponding gene object in the Ingenuity Knowledge Base. These "focus" genes were overlaid onto a global molecular network developed from information contained in the Ingenuity Knowledge Base. The software then algorithmically developed networks around these focus genes based "connectivity" derived from known interactions between products of these genes. No additions of molecules to these networks were made by authors. Network score values listed in figure legends are the $-\log_{10}$ (p-value) of finding this number of focus genes in a group of randomly selected genes the size of a given network.

Results

Gene expression differences in neutrophils and PBMC distinguish patients with juvenile onset rheumatic diseases from controls

Microarray data from isolated peripheral blood neutrophil RNA were obtained from 14 patients with active polyarticular JIA and from 13 control subjects. All data are available at NCBI's Gene Expression Omnibus (GEO Series Record GSE11083). Sixty genes were statistically significantly differentially expressed between these groups (Additional File 1). Nine of these genes were over-expressed in patients (1.8 – 3.0-fold different), and 51 were under-expressed in patients (1.8 – 2.5-fold different). Analysis of data from neutrophil samples from 14 patients with JDM and 13 controls revealed fifteen differentially expressed genes (Additional File 2), five that were under-expressed in patients (1.8 – 2.3 fold) and ten that were over-expressed in patients (1.8 – 2.4 fold different).

RNA isolated from PBMC from 15 patients with JIA, 13 patients with JDM, and 15 controls were used to obtain PBMC microarray datasets. The number of differentially expressed genes in PBMC was higher than in neutrophils for either disease relative to controls. Specifically, 128 genes differed in expression patterns between PBMC of JIA and controls (Additional File 3). 26 were under-expressed (1.8 – 2.6 fold different) and 102 were over-expressed (1.8 – 5.0 fold different) in patients. Twenty-six genes were statistically different between the JDM and control PBMC samples (Additional File 4). All of these were under-expressed in patients (1.8 – 6.9 fold different) with the exception of a 1.9-fold over-expression of mitochondrial tumor suppressor 1 (MTUS1) in patients.

No genes were found that were differentially expressed in both PBMC and neutrophils from JDM patients relative to controls. For JIA, two genes were differentially expressed in both PBMC and neutrophils relative to controls, namely phosphatase and tensin homolog (PTEN, Genbank accession [AK021487](#), Affymetrix probe set id 233314_at) that was under-expressed 1.9-fold in JIA neutrophils and 2.6-fold in JIA PBMC, and ankyrin repeat domain 10 (Genbank accession [AW299775](#), Affymetrix probe set id 235008_at) that was under-expressed 2.0-fold in JIA neutrophils and 2.6-fold in JIA PBMC. Therefore, the majority of differentially expressed genes identified here are unique to particular types of leukocytes.

We also found a small number of genes that were differentially expressed in both diseases relative to controls within a given type of cell. Products of such genes with similar expression patterns in both diseases may function in overlapping inflammatory or autoimmune aspects of these conditions. Two differentially expressed neutrophil genes were found in both diseases, namely the transcript encoding the CUG triplet repeat, RNA binding protein 2 (AA700631; 1565599_at) that was 2.2- and 2.4-fold over-expressed in JIA and JDM respectively; and the transcript encoding phosphatidylinositol binding clathrin assembly protein (AW293296; 239102_s_at) that was 2.3- and 1.8-fold under-expressed in JIA and JDM, respectively. For PBMC, three genes were differentially expressed in both diseases relative to controls, namely granzyme K (GZMK) that was 1.9-fold under-expressed in both diseases, homeodomain-only protein (HOP) under-expressed 1.8-fold in both diseases, and v-myb myeloblastosis viral oncogene homolog (avian)-like 1 (MYBL1) under-expressed 1.9-fold in both diseases. One other gene (225239_at) whose product has not been functionally characterized was also differentially under-expressed in PBMC from both diseases relative to controls. Based on these findings, gene expression patterns of these diseases are considerably different from one another.

For both childhood-onset rheumatic diseases studied here, patients could be distinguished from control children by hierarchical cluster analysis of microarray data obtained from peripheral blood cells. Figure 1 shows a heat map of differentially expressed genes that were identified in neutrophils from patients with JIA and controls. All control samples clustered to the right side of the heat map while all patients clustered to the left. These results demonstrate that gene expression profiling of neutrophils distinguishes most children with JIA from a control population of children ($X^2 = 23.14$; $p = 1.5 \times 10^{-6}$). Hierarchical clustering of differentially expressed neutrophil genes also separated the majority of patients with JDM samples from controls. The cluster on the right side of Figure 2 represents data obtained from 12 patients and 2 controls, while the cluster on the left side contains data from 2 patients and 11 controls ($X^2 = 10.69$, $p = 1.1 \times 10^{-3}$).

Differentially expressed genes in PBMC were also good at discriminating either disease from controls using hierarchical clustering. For JIA, the left cluster in figure 3 contains samples from 15 controls and five patients, while the right cluster contains only samples from eight patients ($X^2 = 10.08$, $p = 1.5 \times 10^{-3}$). For JDM, the left cluster in Figure 4 contains 12 patient samples, while right cluster contains one patient and all control samples ($X^2 = 20.61$; $p = 5.6 \times 10^{-6}$). Patient 399 had active disease at the time the blood sample was donated for this study.

Nine differentially expressed genes selected from both cell types in both diseases were analyzed for differences using quantitative real-time PCR (*MCL1*, *PSMD7*, *CD160*, *GZMK*, *MYBL1*, *ACPP*, *CUGBP2*, *F13A1* and *CTTN*). In every case, those that were differentially over- or under-expressed on microarrays were similarly over- or under-expressed by quantitative PCR.

To better understand potential functional interactions between products of genes that were differentially expressed in these childhood-onset rheumatic diseases relative to childhood controls, differentially expressed genes were analyzed *in silico* using the Ingenuity Pathways Analysis (IPA) software (Ingenuity® Systems, Inc., Redwood City, CA). For each disease and cell type, we observed multiple interconnected networks between gene products, a feature designated *modularity* that is characteristic of normal metabolic networks. [20]. Within networks, certain gene products had numerous known interactions with other products (high connectivity), while other products had relatively few interactions. Figures 5, 6, 7, 8 contain representative examples. Of the 128 genes that were differentially expressed in PBMC from patients with JIA relative to controls, seven networks were identified that each contained twelve or more differentially expressed genes. Figure 5 shows high connectivity

for tumor necrosis factor (TNF) and interferon gamma (IFNG) and lower connectivity for most other genes (e.g., SMAD2). The score calculated by Ingenuity Pathway Analysis software for this network is 20, indicating the probability of finding this number of focus genes in a randomly selected group of genes of this network's size is $<10^{-20}$. (Network scores for all networks shown are listed in the figure legends.) Figure 6 shows results derived from gene expression differences in neutrophils from JIA patients relative to controls. Of the 60 genes that were differentially expressed, IPA identified 4 networks that each contained at least 9 differentially expressed genes. Here, NFkB and the kinases ERK, P38MAPK and MAPK14 show high connectivity. These kinases have been linked to the generation of reactive oxygen species in rheumatoid arthritis synovium [21]. In network theory, nodes with high connectivity are defined as *hubs* [22]. These results demonstrate that hubs may be represented by both non-differentially expressed (e.g., Figure 5) and differentially expressed genes (e.g., Figure 6). These transcriptional hubs may be connected to nodes that represent differentially expressed (shown in color) and similarly expressed genes. All seven networks generated from the JIA PBMC data and all 4 networks generated from the JIA neutrophil data contain such hub and node structures.

Such networks are not restricted to disease-associated transcriptional changes in JIA. Gene expression profiles in PBMC obtained from comparing patients with JDM to controls revealed TNF, nuclear factor kappa B (NFkB) and interferon gamma (IFNG) hubs from similarly expressed genes and a VIL2 hub from one of the differentially expressed genes between these groups (Figure 7). The TNF hub was also observed in a JDM neutrophil-derived network (Figure 8). A type 1 interferon signature has already been reported in JDM muscle [23] and peripheral blood of both adults and children with inflammatory myopathy [24]. Polymorphisms in the TNFA gene are known to confer disease risk and are associated with differences in clinical course and disease outcome in JDM.

The functional modeling of differentially expressed genes illustrated here has identified long-suspected pathologic hubs centering on TNF α and IFN γ , and, in addition, a previously unknown (but biologically sensible) hub for proteins such as VIL2. These results demonstrate that hub and node structures, also known as *scale-free networks* [25] that have been described for normal metabolic processes are also observed in both neutrophils and PBMC gene expression signatures of these diseases.

Discussion

One important insight that has emerged from the genomic era of biology and medicine has been the development of deeper insights into the complexity of biologi-

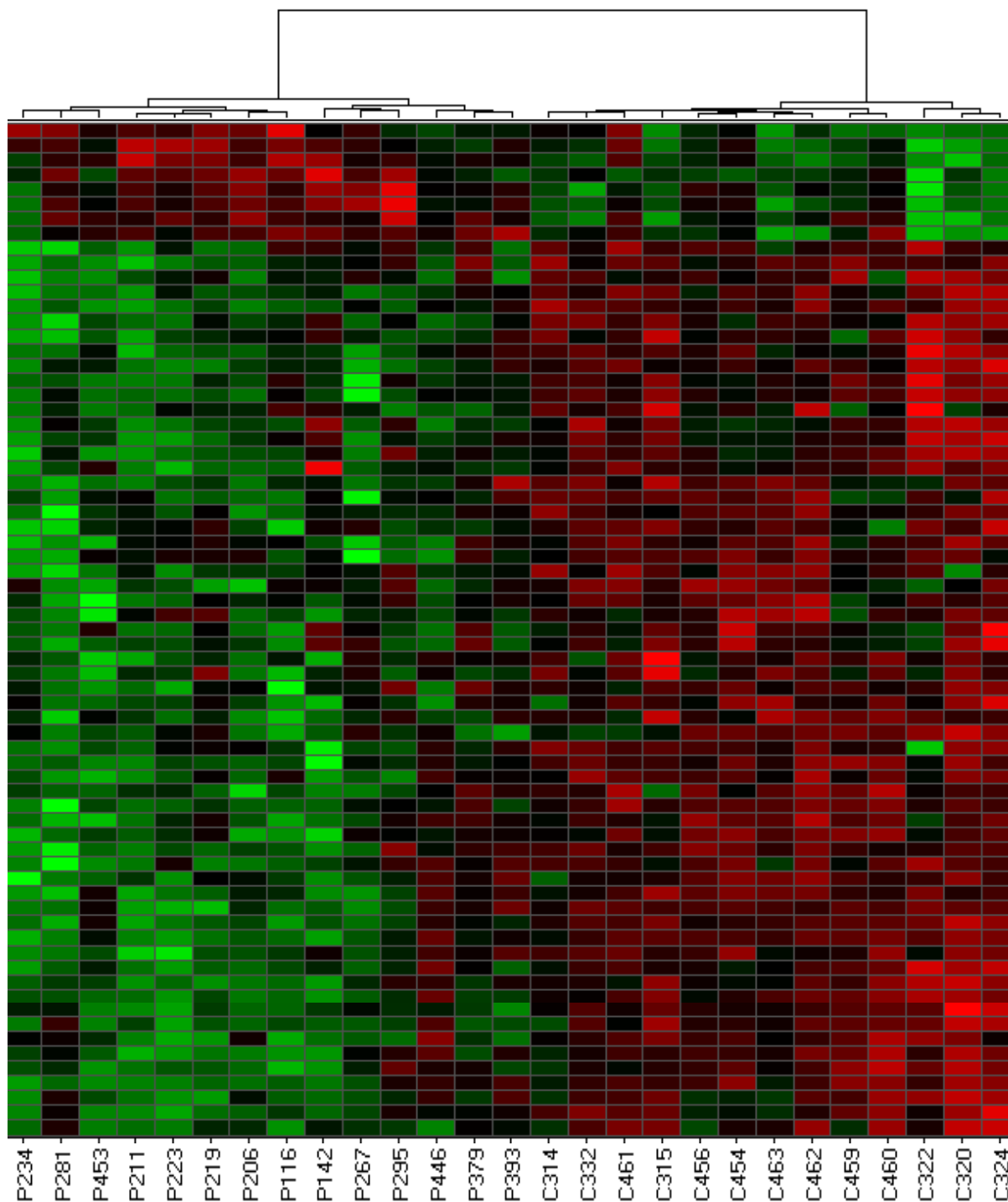


Figure 1
Hierarchical cluster analysis derived from gene expression profiling in neutrophils of children with active polyarticular JIA and neutrophils from control children. Clustering was performed using Ward's method which clustered on both the samples and the genes. Control samples are designated by the prefix "C", patient samples are designated "P". Each column represents patterns of genes from a separate sample, indicated by different numbers. Each row represents a separate gene. Red: genes that are over-expressed in disease; green: genes that are under-expressed in disease.

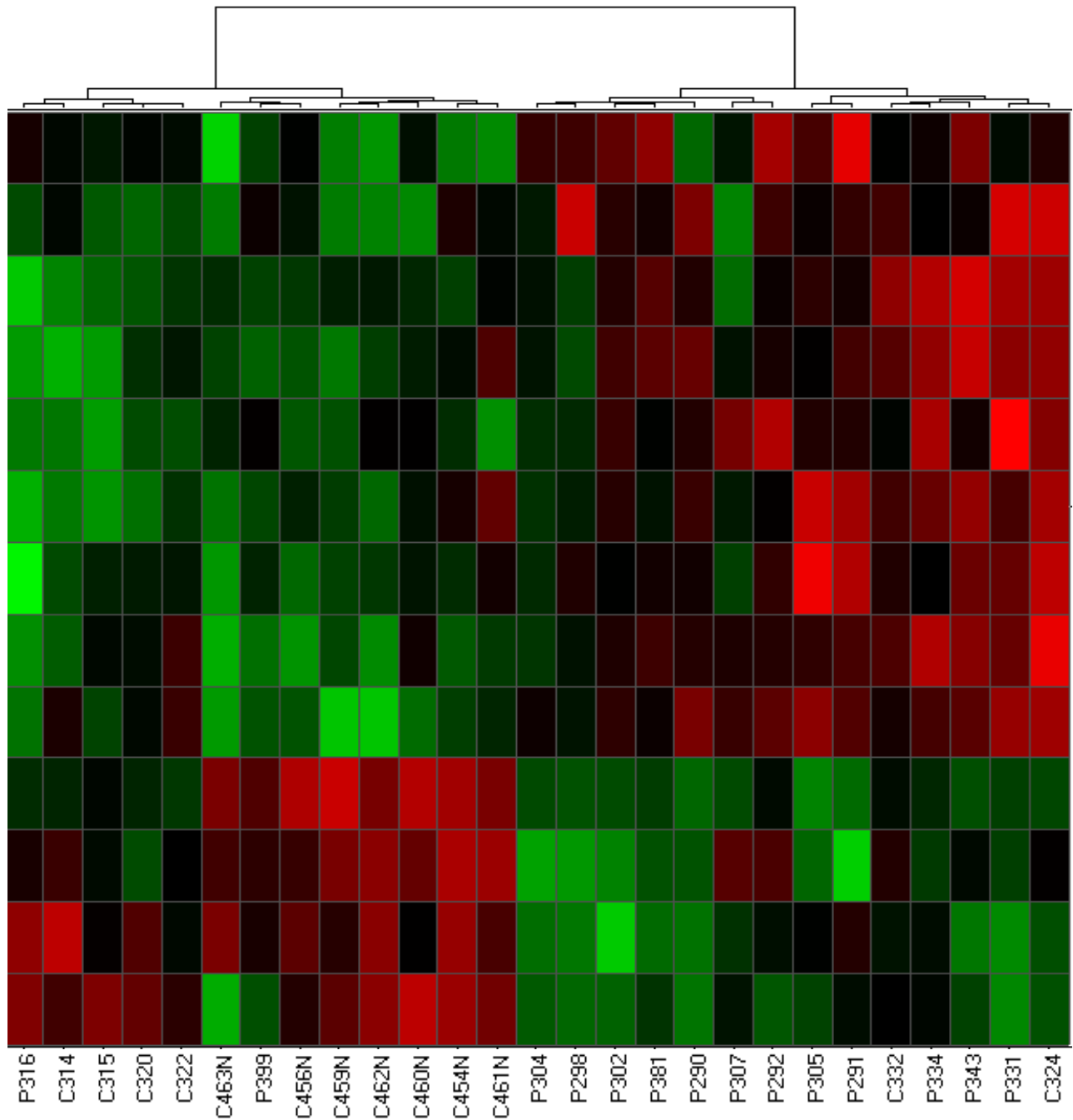


Figure 2
Hierarchical cluster analysis derived from gene expression profiling of neutrophils from JDM and control samples. Columns and rows are as described in Figure 1.

cal structures and processes. Prior to this era, biologists were able to work under the assumption that biological processes were essentially linear and that different components of inter-related metabolic systems functioned according to classical network theory as articulated by Erdos and Renyi [26]. This theory assumes that each pair

of constituents (nodes or vertices) in a network is connected in a linear fashion to each other by edges. Furthermore, each node has generally the same number of links with the others, and that the number of links follows a Poisson distribution depending on the number of constituents in the system. However, computer modeling of bio-

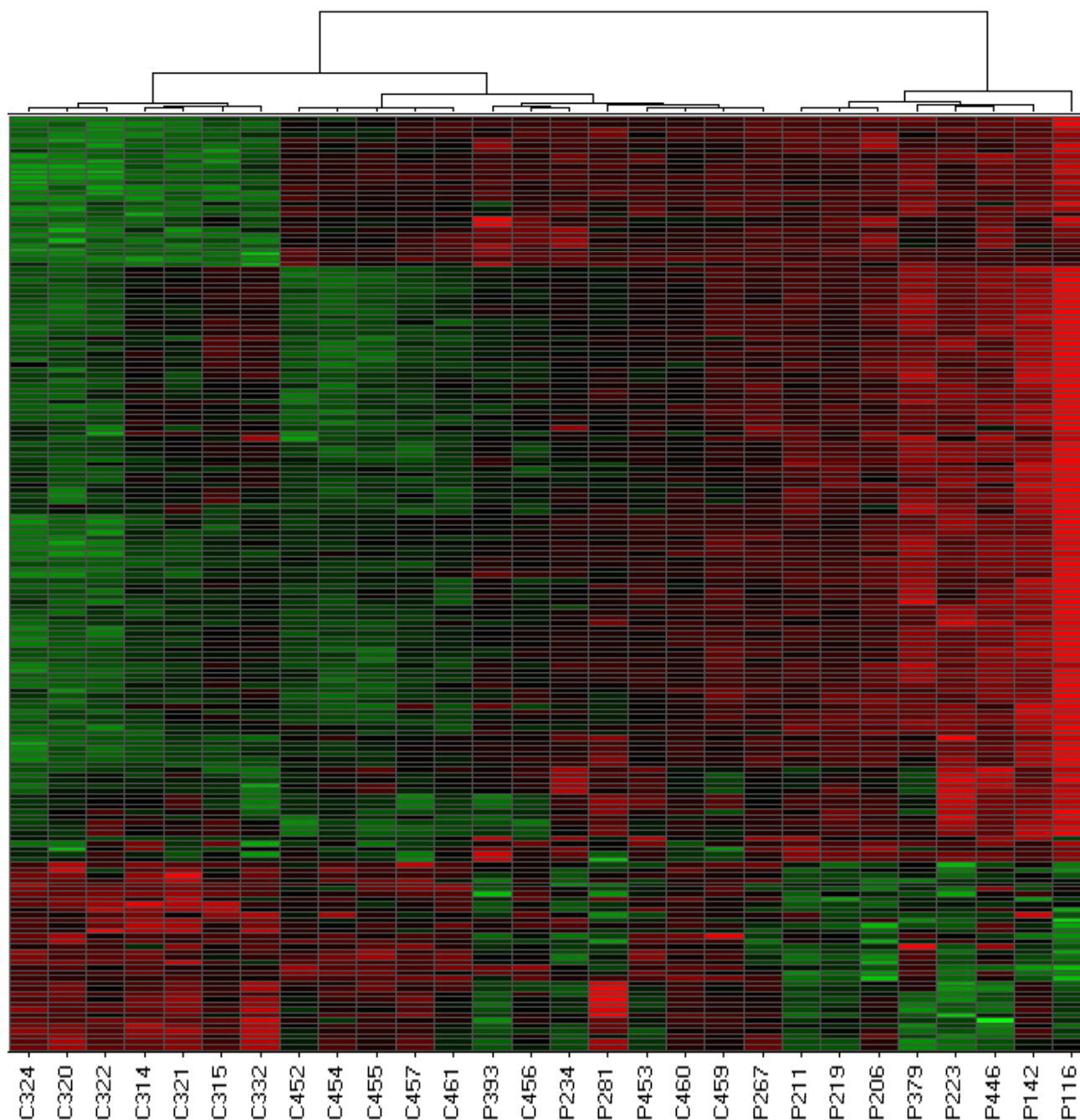


Figure 3
Hierarchical cluster analysis derived from gene expression profiling of PBMC from JIA and control samples.
 Columns and rows are as described in Figure 1.

logical systems has challenged that concept [22]. Evidence from genome sequencing and known biochemical functions of specific proteins suggests that specific nodes within biologic networks show high degrees of connectiv-

ity to other components ("hubs"), while most other nodes show low degrees of connectivity [27]. This high variability in degrees between nodes is a general feature of scale-free networks, particularly when these degrees fol-

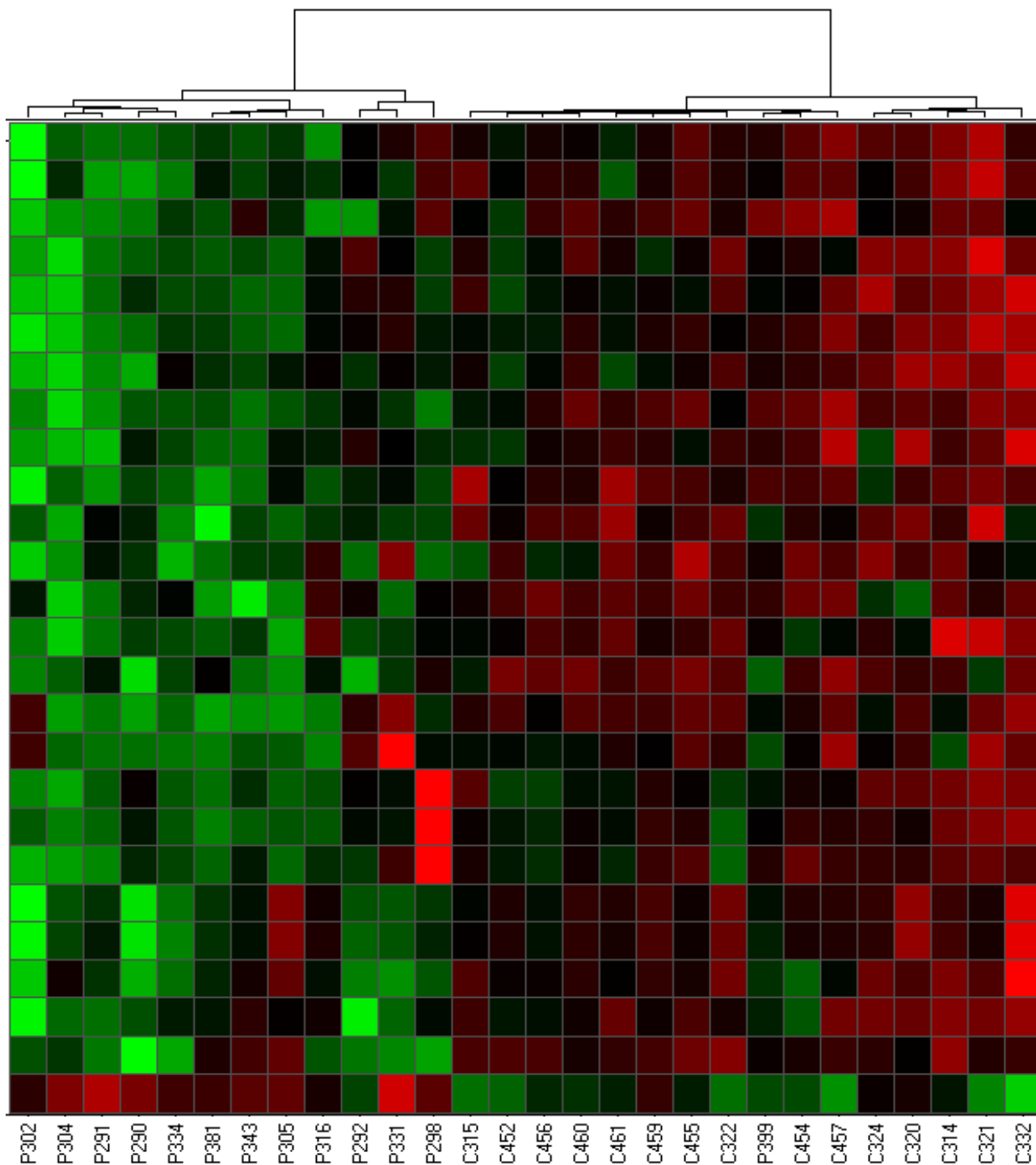


Figure 4
Hierarchical cluster analysis derived from gene expression profiling of PBMC from JDM and control samples.
Columns and rows are as described in Figure 1.

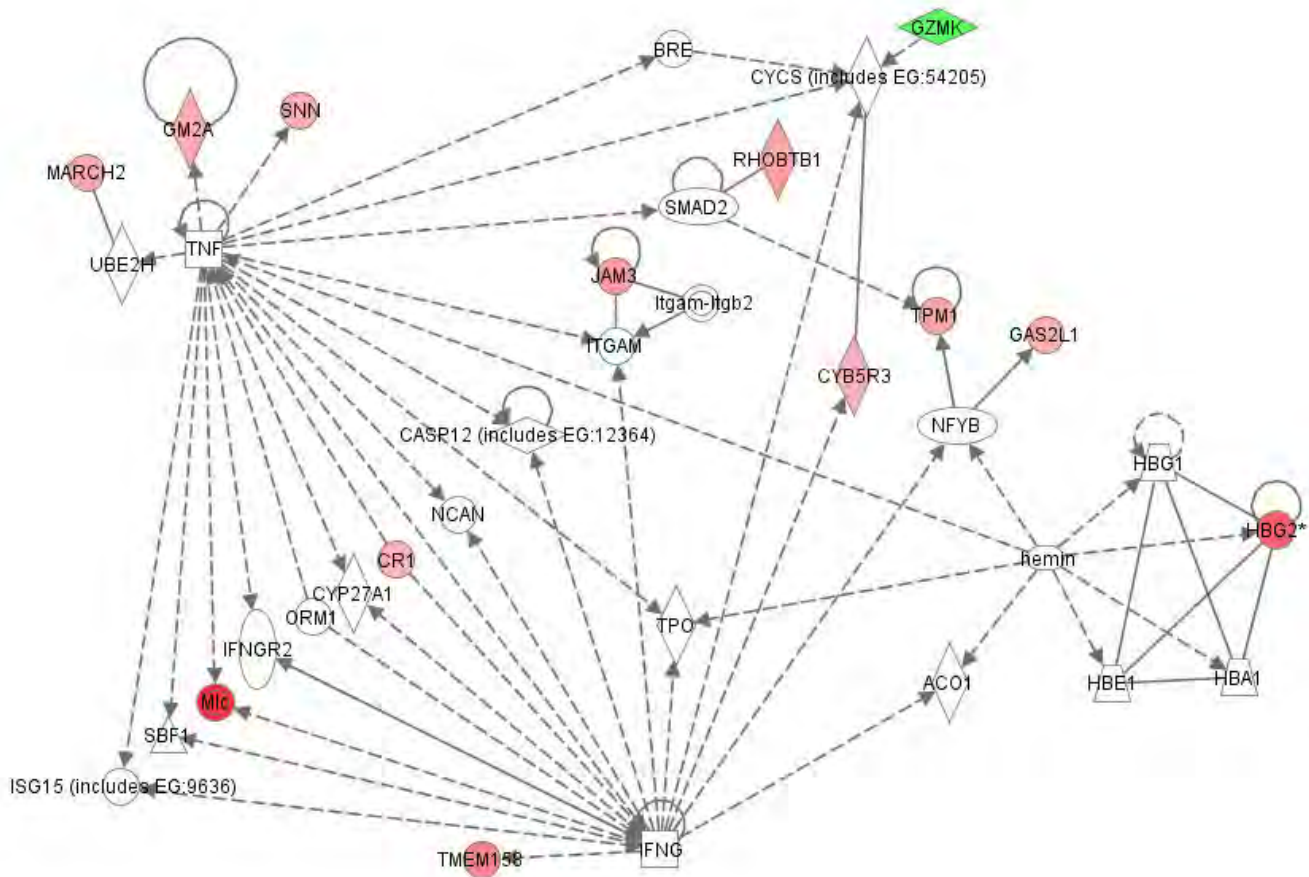


Figure 5
Interactions between products of genes that were differentially expressed in JIA patient PBMC samples relative to controls. Differentially expressed genes are designated by color (red: up-regulated in disease; green: down-regulated in disease). Increased intensity reflects greater fold-change between groups. Additional genes that were not differentially expressed between groups (not colored) with known interactions to differentially expressed genes were added by IPA software. Network score = 20.

low a power law distribution [28]. Furthermore, groups of metabolic networks can be grouped into larger elements of related function [29].

This paper is the first to report in a systematic way that *pathologic* networks carry many of the same features as physiologic networks. *A priori*, there is no reason to assume that disease states would imitate normal cellular function in its display of scale-free properties with modularity. It is possible, for example, that disease states might result in perturbation of cell function(s) such that a loss of scaling and increased linearity of metabolic networks is seen. Implicit in these models is the notion that chronic inflammatory diseases like JIA and JDM represent not the *breakdown* of normal immune mechanisms (as is posited in autoimmune theories of pathogenesis), but their *adaptive functioning*. This is a profoundly different pathogenic

model and underscores the potential of systems biology thinking to transform our understanding of illnesses.

The fact that such scale-free networks exist among disease states has interesting implications for the chronic inflammatory diseases studied here. One of the most important features of scale-free networks is their relative resistance to perturbation or attack when peripheral nodes are targeted [30]. Only alterations in the hubs results in significant alteration in the network. This fact has obvious therapeutic implications for these diseases. It should be clear that the most promising targets of therapy are going to be those specifically directed at pathologic hubs. Even if a gene shows strong differential expression between children with disease and control children, that gene is unlikely to be a promising therapeutic target if it is a more peripheral node. Proof-of-concept for this idea comes

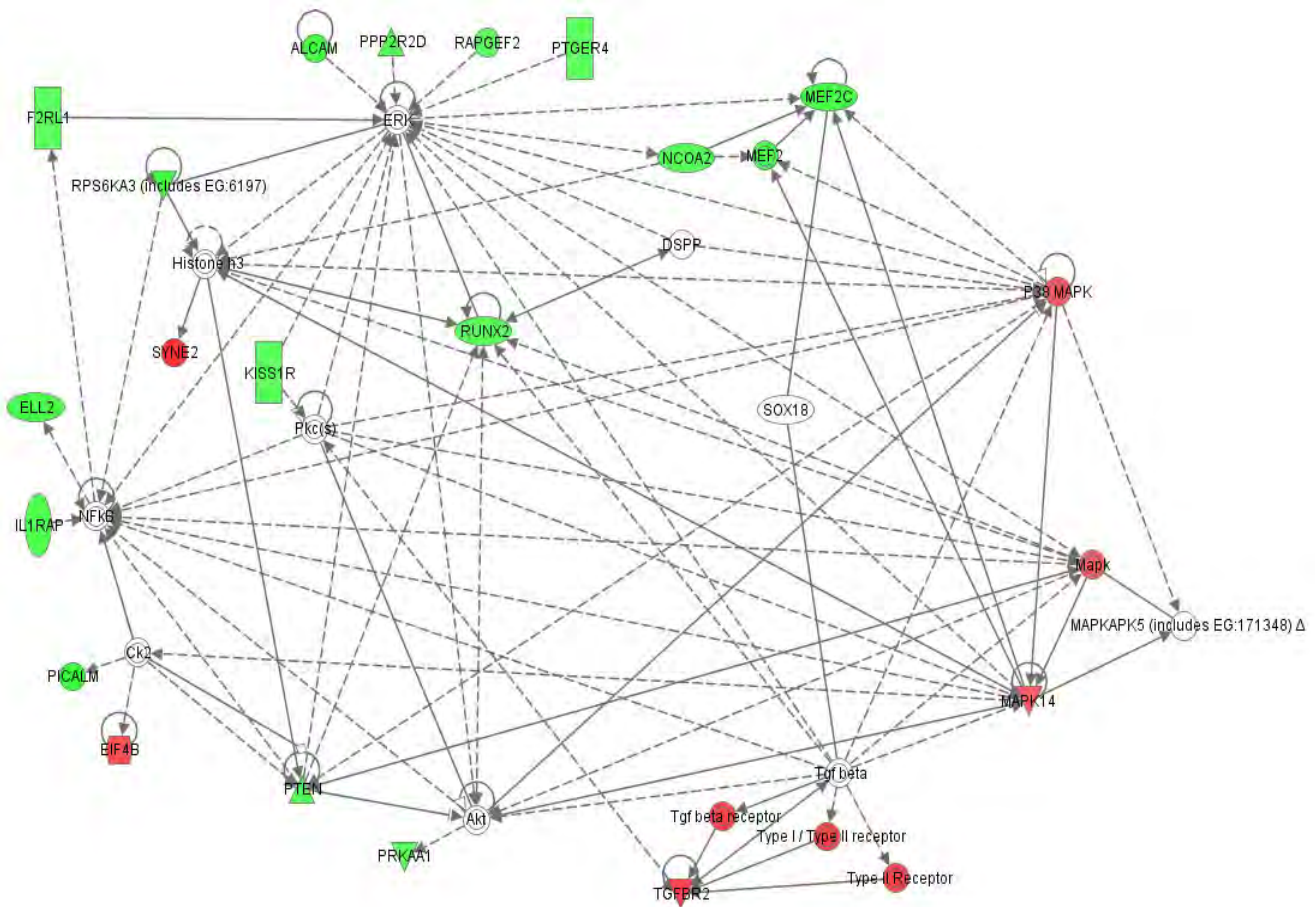


Figure 6
Interactions between products of genes that were differentially expressed in JIA patient neutrophil samples relative to controls. Network score = 17. Patterns are as described in the legend of Figure 5.

from our clinical experience with JIA. TNF inhibitors have emerged in the past 20 years as the most highly successful therapy for this disease [31], and we note that in our analysis, TNF is a prominent hub in a pathology-associated metabolic network in both neutrophils and PBMC (Figures 6, 7, 8). Based on this model, we would predict that targeting a gene such as JAM3 (Figure 5), although highly differentially expressed between children with JIA and controls, would be a less successful strategy.

These studies also have implications for our understanding of the pathogenesis of rheumatic diseases in children. In the diseases studied here, alterations in gene expression profiles relative to control subjects occurred in cells of both innate (neutrophils) and adaptive (PBMC) immunity. These findings suggest that complex interactions between innate and adaptive immunity occur in these diseases, as we have previously proposed [8,32]. Thus, it is perhaps an over-simplification to refer to these illnesses as "autoimmune" disorders, and, indeed, little in the expres-

sion profiles or the *in silico* models supports the hypothesis that these illnesses are driven primarily by a breakdown in the mechanisms through which "self" and "non-self" are recognized within the adaptive immune system. Rather, the metabolic structures may be better interpreted as an adaptation to an externally-applied force or forces (a hypothesis that does not exclude the possibility that one of those elements is an altered or inappropriately recognized self antigen).

There are some limitations on these data that must be considered. The most important limitation concerns the Ingenuity Pathway Analysis (IPA) program itself. The program builds its models by querying the known literature. This has several implications. First, the models reflect what is already known about interactions between specific genes. Unknown interactions could not be discovered through this analysis, and thus it is likely that there are highly relevant interactions that do not emerge in IPA. The next limitation is the fact that, since IPA queries only

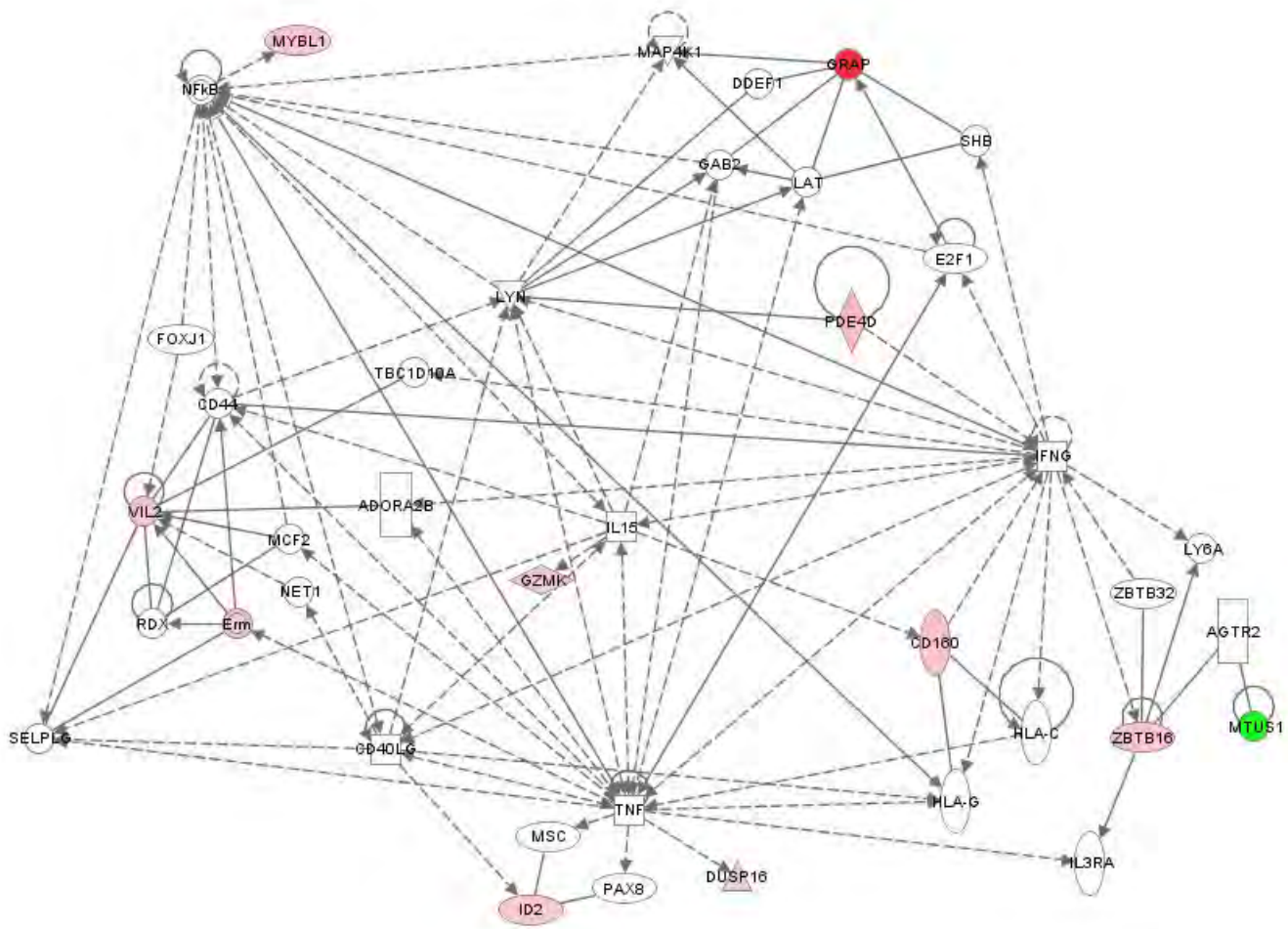


Figure 7
Interactions between products of genes that were differentially expressed in JDM PBMC relative to control PBMC. Network score = 23. Patterns are as described in the legend of Figure 5.

known associations and interactions, genes about which little or nothing is known about the function of their products cannot be identified as hubs using this method. Given these limitations, the models generated here must be considered preliminary and incomplete. However, despite these limitations, we believe that the models that emerge from this analysis better explain the complexity encountered in the clinic than the more limited, linear models generated from purely reductionist approaches.

Conclusion

In conclusion, we demonstrate here that the pathology-associated metabolic networks in leukocytes of children with diverse inflammatory disorders show characteristics of *physiologic* cell networks. The scale-free nature of the hub-and-node structures of these networks provides new opportunities to identify targets of therapy and test mod-

els of disease pathogenesis. While the specific models reported here are likely to be altered as more is learned about the function of specific elements within the networks, the emergence of known points of pathogenic control within these networks (e.g., TNF) support the validity of the concepts reported here.

Competing interests

The authors declare that they have no competing interests.

Authors' contributions

MBF directed all aspects of microarray operations, performed data analysis and interpretation, and wrote the manuscript with JNJ; SW, AA, and TM assisted in patient characterization and microarray analyses on the JDM population; SW and AA also assisted in data analysis and interpretation; KJ and YC assisted cell separation and iso-

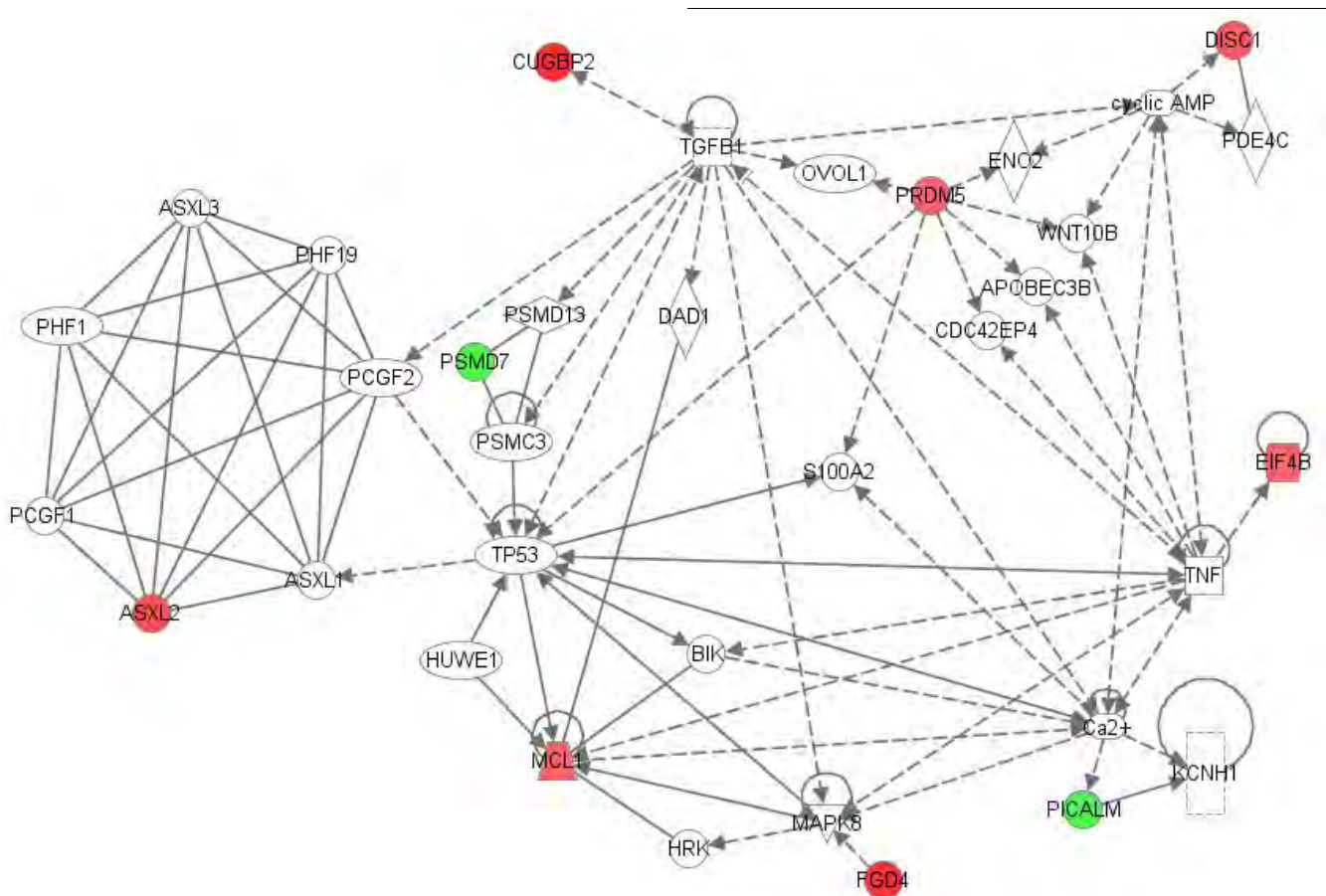


Figure 8
Interactions between products of genes that were differentially expressed in JDM neutrophils relative to control neutrophils. Network score = 25. Patterns are as described in the legend of Figure 5.

lating RNA, and performed rtPCR studies; NK performed statistical analyses to identify differentially expressed genes; RM and BC assisted in identifying clinical phenotypes in the JIA population; JO performed RNA quality control, labeling, hybridizations and scanning; JNJ was the P.I. on this study and was responsible for the overall study design, data analysis and interpretation.

Additional material

Additional File 1

Table 1. Differentially expressed genes in *jia* v control neutrophils.

Click here for file
[\[http://www.biomedcentral.com/content/supplementary/1755-8794-2-9-S1.doc\]](http://www.biomedcentral.com/content/supplementary/1755-8794-2-9-S1.doc)

Additional File 2

Table 2. Differentially expressed genes in *jdm* v control neutrophils.

Click here for file
[\[http://www.biomedcentral.com/content/supplementary/1755-8794-2-9-S2.doc\]](http://www.biomedcentral.com/content/supplementary/1755-8794-2-9-S2.doc)

Acknowledgements

This project described was supported in part by grants from the National Institutes of Health (RR03145, RR16478, RR02143, RR15577, and AI062629) and an Innovate Research Grant from the Arthritis Foundation. The content is solely the responsibility of the authors and does not necessarily represent the official views of the National Institutes of Health. Amita Aggarwal was supported by an overseas associateship award from Department of Biotechnology, Government of India. Ryan McKee and Brad Chaser were supported by Medical Student Research Preceptorships from the American College of Rheumatology. Brad Chaser received additional support from the University of Oklahoma Native American Center of Excellence. Timothy McGhee was supported by the University of Oklahoma Native American Research Center for Health (NARCH), 26-IHS-300014-03.

References

1. MacLennan NK, Rahib L, Shin C, Fang Z, Horvath S, Dean J, Liao JC, McCabe ER, Dipple KM: **Targeted disruption of glycerol kinase gene in mice: expression analysis in liver shows alterations in network partners related to glycerol kinase activity.** *Human Mol Genet* 2006, **15**:405-415.
2. McCabe LL, McCabe ER: **Complexity in genetic diseases: how patients inform the science by ignoring the dogma.** *Am J Med Genet (Part A)* 2006, **140**:160-161.

3. Dipple KM, McCabe ER: **Phenotypes of patients with "simple" Mendelian disorders are complex traits: thresholds, modifiers, and systems dynamics.** *Am J Human Genetic* 2000, **66**:1729-1735.
4. Fearon DT, Locksley RM: **The instructive role of innate immunity in the acquired immune response.** *Science* 1996, **72**:50-53.
5. Warrington KJ, Seisuke T, Goronzy JJ, Weyand CM: **CD4+, CD28-T cells in rheumatoid arthritis patients combine features of innate and adaptive immune systems.** *Arthritis Rheum* 2001, **44**:13-20.
6. Ottino JM: **Engineering complex systems.** *Nature* 2004, **427**:399.
7. Kirschner MW: **The meaning of systems biology.** *Cell* 2005, **121**:503-504.
8. Jarvis JN: **Gene expression arrays in juvenile rheumatoid arthritis: will the blind men finally see the elephant?** *Curr Prob Pediatr Adolesc Health Care* 2006, **36**:91-96.
9. Petty RE, Southwood TR, Manners P, Baum J, Glass DN, Goldenberg J, et al.: **International League of Associations for Rheumatology classification of juvenile idiopathic arthritis: second revision, Edmonton, 2001.** *J Rheumatol* 2004, **31**:390-392.
10. Wallace CA, Ruperto N, Giannini E, for the Childhood Arthritis and Rheumatology Research Alliance; Pediatric Rheumatology International Trials Organization; Pediatric Rheumatology Collaborative Study Group: **Preliminary criteria for clinical remission for select categories of juvenile idiopathic arthritis.** *J Rheumatol* 2004, **31**:2290-2294.
11. Crowe WE, Bove KE, Levinson JE, Hilton PK: **Clinical and pathogenetic implications of histopathology in childhood polydermatomyositis.** *Arthritis Rheum* 1982, **25**:126-139.
12. Bohan A, Peter JB: **Polymyositis and dermatomyositis.** *N Eng J Med* 1975, **292**:344-347, 403-7.
13. Cobb JP, Mindrinos MN, Miller-Graziano C, Calvano SE, Baker HV, Xiao W, Laudanski K, Brownstein BH, Elson CM, Hayden DL, Herndon DN, Lowry SF, Maier RV, Schoenfeld DA, Moldawer LL, Davis RW, Tompkins RG, Baker HV, Bankey P, Billiar T, Brownstein BH, Calvano SE, Camp D, Chaudry I, Davis RW, members of the Inflammation and Host Response to Injury Large-Scale Collaborative Research Program: **Application of genome-wide expression analysis to human health and disease.** *Proc Nat'l Acad Sci USA* 2005, **102**:4801-4806.
14. Feezor RJ, Baker HV, Mindrinos M, Hayden D, Tannahill CL, Brownstein BH, Fay A, MacMillan S, Laramie J, Xiao W, Moldawer LL, Cobb JP, Laudanski K, Miller-Graziano CL, Maier RV, Schoenfeld D, Davis RW, Tompkins RG: **Inflammation and Host Response to Injury, Large-Scale Collaborative Research Program. Whole blood and leukocyte RNA isolation for gene expression analyses.** *Physiol Genomics* 2004, **19**:247-254.
15. Irizarry RA, Hobbs B, Collin F, Beazer-Barclay YD, Antonellis KJ, Scherf U, Speed TP: **Exploration, normalization, and summaries of high density oligonucleotide array probe level data.** *Biostatistics* 2003, **4**:249-264.
16. Simon R, Korn E, McShane L, Radmacher M, Wright G, Zhao Y: *Design and Analysis of DNA Microarray Investigations* New York: Springer-Verlag; 2003.
17. Korn EL, Troendle JF, McShane LM, Simon R: **Controlling the number of false discoveries: Application to high-dimensional genomic data.** *Journal of Statistical Planning and Inference* 2004, **124**:379-398.
18. Wright GW, Simon R: **A random variance model for detection of differential gene expression in small microarray experiments.** *Bioinformatics* 2003, **19**:2448-2455.
19. Ward JH: **Hierarchical Grouping to Optimize an Objective Function.** *J Am Statist Assoc* 1963, **58**:236-244.
20. Ravasz E, Somera AL, Mongru DA, Oltvai Z, Barabasi A-L: **Hierarchical organization of modularity in metabolic networks.** *Science* 2002, **297**:1551-1557.
21. Dang PM, Stensballe A, Boussetta T, Raad H, Dewas C, Kroviarski Y, Havem Y, Jensen ON, Gougerot-Pocidal MA, El-Benna J: **A specific p47phox-serine phosphorylated by convergent MAPKs mediates neutrophil NADPH oxidase priming at inflammatory sites.** *J Clin Invest* 2006, **116**:2033-43.
22. Barabasi A-L, Albert A: **Emergence of scaling in networks.** *Science* 1999, **286**:509-512.
23. Teaks Z, Hoffman EP, Lutz JL, Fedczyna TO, Stephan D, Bremer EG, Krasnoselska-Ritz I, Kumar A, Pachman LM: **Gene expression profiling in DQA1*0501+ children with untreated dermatomyositis: a novel model of pathogenesis.** *J Immunol* 2002, **168**:4154-4163.
24. Baechler EC, Bauer JW, Slattery CA, Ortmann WA, Espe KJ, Novitzke J, Ytterberg SR, Gregersen PK, Behrens TW, Reed AM: **An interferon signature in the peripheral blood of dermatomyositis patients is associated with disease activity.** *Molecular Medicine* 2007, **13**:59-68.
25. Jeong H, Tombor B, Oltvai ZN, Barabasi A-L: **The large-scale organization of metabolic networks.** *Nature* 2000, **407**:651-654.
26. Erdos P, Renyi A: **On the evolution of random graphs.** *Publ Math Inst Hung Acad Sci* 1960, **5**:17-61.
27. Barabasi A-L, Oltvai ZN: **Network biology: understanding the cell's functional organization.** *Nat Rev Genet* 2004, **5**:101-113.
28. Li L, Alderson D, Tanaka R, Doyle JC, Willinger W: **Towards a theory of scale-free graphs: definitions, properties, and implications.** In *Internet Mathematics* A K Peters, Ltd; 2005.
29. Dong J, Horvath S: **Understanding network concepts in modules.** *BMC Systems Biol* 2007, **1**:24.
30. Albert R, Jeong H, Barabasi A-L: **Error and attack tolerance of complex networks.** *Nature* 2000, **406**:378-382.
31. Lovell DJ, Reiff A, Jones OY, Schneider R, Nocton J, Stein LD, Gedalia A, Ilowite NT, Wallace CA, Whitmore JB, White B, Giannini EH: **Pediatric Rheumatology Collaborative Study Group. Long-term safety and efficacy of etanercept in children with polyarticular-course juvenile rheumatoid arthritis.** *Arthritis Rheum* 2006, **54**:1987-1994.
32. Jarvis JN: **Mechanisms of pathogenesis and inflammation in the pediatric rheumatic diseases.** *Curr Opin Rheumatol* 1998, **10**:459-467.

Pre-publication history

The pre-publication history for this paper can be accessed here:

<http://www.biomedcentral.com/1755-8794/2/9/prepub>

Publish with **BioMed Central** and every scientist can read your work free of charge

"BioMed Central will be the most significant development for disseminating the results of biomedical research in our lifetime."

Sir Paul Nurse, Cancer Research UK

Your research papers will be:

- available free of charge to the entire biomedical community
- peer reviewed and published immediately upon acceptance
- cited in PubMed and archived on PubMed Central
- yours — you keep the copyright

Submit your manuscript here:
http://www.biomedcentral.com/info/publishing_adv.asp

