

# A new Eocene archaeocete (Mammalia, Cetacea) from India and the time of origin of whales

SUNIL BAJPAI\* AND PHILIP D. GINGERICH†‡

\*Department of Earth Sciences, University of Roorkee, Roorkee 247667, Uttar Pradesh, India; and †Museum of Paleontology and Department of Geological Sciences, University of Michigan, Ann Arbor, MI 48019-1079

Communicated by Elwyn L. Simons, Duke University Primate Center, Durham, NC, October 15, 1998 (received for review October 9, 1998)

**ABSTRACT** *Himalayacetus subathuensis* is a new pakicetid archaeocete from the Subathu Formation of northern India. The type dentary has a small mandibular canal indicating a lack of auditory specializations seen in more advanced cetaceans, and it has *Pakicetus*-like molar teeth suggesting that it fed on fish. *Himalayacetus* is significant because it is the oldest archaeocete known and because it was found in marine strata associated with a marine fauna. *Himalayacetus* extends the fossil record of whales about 3.5 million years back in geological time, to the middle part of the early Eocene [ $\approx 53.5$  million years ago (Ma)]. Oxygen in the tooth-enamel phosphate has an isotopic composition intermediate between values reported for freshwater and marine archaeocetes, indicating that *Himalayacetus* probably spent some time in both environments. When the temporal range of Archaeoceti is calibrated radiometrically, comparison of likelihoods constrains the time of origin of Archaeoceti and hence Cetacea to about 54–55 Ma (beginning of the Eocene), whereas their divergence from extant Artiodactyla may have been as early as 64–65 Ma (beginning of the Cenozoic).

*Pakicetus* and contemporary archaeocetes have long been the oldest whales known as fossils (1–3). All are from red beds of the lower Kuldana Formation in Pakistan and the upper Subathu Formation in India, which are intercalated in a thicker sequence of Eocene marine sediments. All were deposited in a shallow epicontinental remnant of the Tethys Sea (Neotethys) that formerly separated the Indian subcontinent from the rest of Asia. These red beds yield essentially the same Kuldana and Kalakot freshwater fish and continental vertebrate fauna of early-middle Eocene age (4, 5). When first described, *Pakicetus* was interpreted as an amphibious initial stage of whale evolution that rested and reproduced on land and entered Tethys opportunistically to feed on fish (1).

We report here a new pakicetid archaeocete from marine strata of the middle Subathu Formation of India. The new pakicetid was found about 100 m lower stratigraphically and 3.5 million years older geologically than the Kuldana–Kalakot-equivalent upper Subathu red bed interval producing *Pakicetus* elsewhere. This not only extends the fossil record of Cetacea back in time, but also reinforces the idea that whales originated on the margin of Tethys and corroborates interpretation of pakicetids as an initial amphibious stage of cetacean evolution entering Tethys to feed on fish.

## SYSTEMATICS

Order Cetacea Brisson 1762  
Suborder Archaeoceti Flower 1883

The publication costs of this article were defrayed in part by page charge payment. This article must therefore be hereby marked “advertisement” in accordance with 18 U.S.C. §1734 solely to indicate this fact.

© 1998 by The National Academy of Sciences 0027-8424/98/9515464-5\$2.00/0  
PNAS is available online at www.pnas.org.

Family Pakicetidae Gingerich & Russell 1990

*Himalayacetus subathuensis*, new genus and species

**Etymology.** *Himalaya*, Sanskrit, place of snow and *cetus*, Greek (masculine), whale; *subathuensis* refers to the Subathu Formation and Subathu type section in the Himalayan foothills yielding the fossil described here.

**Holotype.** Left dentary with molar teeth  $M_{2-3}$  (Figs. 1*b* and 2*a* and *b*), Roorkee University Vertebrate Paleontology Laboratory [RUSB] specimen 2003, collected by A. Sahni, J.-J. Jaeger, V. Courtillot, and E. Buffetaut during a joint Panjab University–Université de Montpellier research project.

**Type Locality.** Oyster-rich limestone near the base of the Subathu Formation type section in Kuthar Nala in the Simla Hills of the Lesser Himalaya Range, Himachal Pradesh, India (30° 58' 54" N, 76° 58' 36" E; Survey of India 15' quadrangle 53 B/13).

**Age and Distribution.** The type comes from zone IIIc in Mathur's (9) standard classification of the Subathu Formation (Fig. 3). *H. subathuensis* is known only from the type locality.

**Diagnosis.** *Himalayacetus* has the general molar form characteristic of Archaeoceti. It is clearly a pakicetid because it lacks the enlarged mandibular canal seen in all of the more advanced archaeocetes (Fig. 1). *Himalayacetus* is similar in size to later *Pakicetus* (7, 8) but differs in having lower molars with a larger and more rounded major cusp (protoconid) on the trigonid and a smaller and less elevated minor cusp (hypoconid) on the talonid (Fig. 2). *Himalayacetus* differs from *Pakicetus*, *Gandakasia* (14), and *Ambulocetus* (15) in having the anteromedial cusp at the base of the trigonid projecting more anteriorly than the anterolateral cusp.

## DESCRIPTION AND COMPARISON

*H. subathuensis* is represented by a partial left dentary with alveoli for  $M_1$ , the slightly damaged crown of  $M_2$ , and the complete crown of  $M_3$ . The base of a shallow mandibular canal is preserved relatively high on the medial side of the dentary (Fig. 1*b*). The top of the canal is not preserved, but the base is so high and the width is so narrow that it cannot have been enlarged like that of *Ambulocetus* (15) or later archaeocetes.

The crown of  $M_1$  is missing, but alveoli preserved on the occlusal surface of the dentary indicate that it was approximately 29 mm long. The trigonid of  $M_2$  has a high, narrow, rounded protoconid, partly broken, with a prominent anterior paracristid running down to the base of the crown, where it joined a once substantial paraconid. A weaker anterior crest is also present, forming a raised anterobuccal edge and bordering the shallowly depressed anterior fovea. The anterobuccal crest joins the remnant of a basal cusp that appears to have been less prominent than the paraconid. There is no trace of a metaconid. A posterior cristid runs down the back of the trigonid to a low hypoconid cusp on the talonid. The medial part is

Abbreviation: Ma, million years ago.

‡To whom reprint requests should be addressed. e-mail: gingeric@umich.edu.

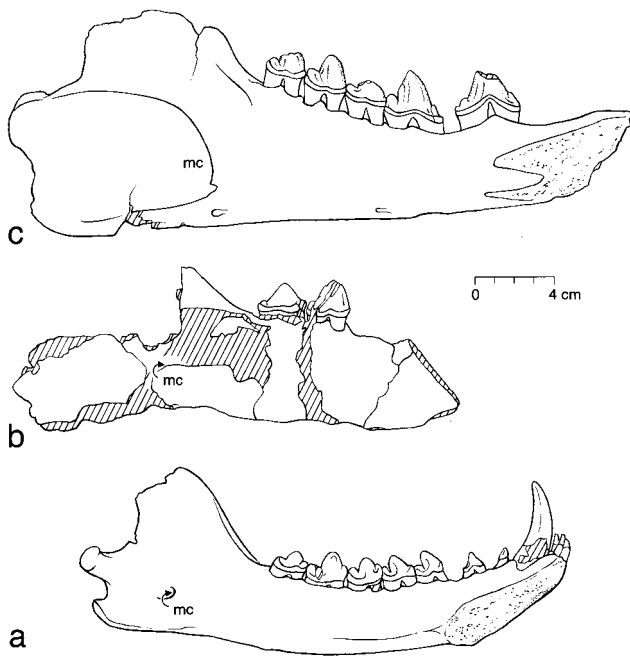


FIG. 1. *Himalayacetus subathuensis* type specimen compared with an earlier Asian mesonychid and a later Asian archaeocete. All are left dentaries shown in medial view. (a) *Sinonyx jiashanensis* type (6), late Paleocene, with incisor  $I_{1-3}$ , canine  $C_1$ , premolar  $P_{1-4}$ , and molar  $M_{1-3}$  (China; Institute of Vertebrate Palaeontology and Palaeoanthropology IVPP 10760). (b) *H. subathuensis* type, early Eocene, with  $M_{2-3}$  (India; Roorkee University RUSB 2003). (c) Representative middle Eocene archaeocete with  $P_{3-4}$  and  $M_{1-3}$  (Pakistan; Geological Survey of Pakistan—University of Michigan GSP-UM 3062, drawing reversed from right side). Note similarities in overall size and rounded molar profiles, suggesting similar trophic adaptation. *H. subathuensis* retains a small mandibular canal (mc) like that of earlier mesonychids, contrasting with the larger mandibular canal of *Ambulocetus* and all postpakiectid archaeocetes; a small mandibular canal precludes whale-like hearing in water (3).

damaged, but the talonid was clearly narrow. The crown, as a whole, has a very weak buccal cingulid and a slightly stronger lingual cingulid.  $M_2$  measures 26.3 mm long and 10.1 mm wide at the base of the crown. The trigonid was at least 21.0 mm high at the apex of the protoconid, and the talonid was about 7.0 mm high.

The crown of  $M_3$  (Fig. 2b) is similar to that of  $M_2$  but is better preserved, with the only substantial differences being of proportion.  $M_3$  measures 22.1 mm long and 10.6 mm wide at the base of the crown. The trigonid is 17.5 mm high at the apex of the protoconid, and the talonid is 7.4 mm high.

Comparing what is known of all three molars, it appears that there was a modest *Pakicetus*-like size gradient, with molar size decreasing posteriorly. Molar morphology is generally similar to that of other known early and early-middle Eocene archaeocetes. *Ichthyolestes pinfoldi* (14) is too small to be confused with *Himalayacetus*. The lower molars of *Gandakasia potens* (14) and *Ambulocetus natans* (15) are larger. The closest resemblance is to a species of *Pakicetus* (16, 17) but, as stated above, molars of *Himalayacetus* have larger and more rounded protoconids, lower and narrower talonids, and a more anteriorly positioned anteromedial cusp at the base of the trigonid (Fig. 2).

#### AGE OF HIMALAYACETUS

*Himalayacetus* is significant in being the oldest cetacean known to date, predating *Pakicetus* and its contemporaries by some 3.5 million years. *Pakicetus* was thought to be late early Eocene in age when it was first described (1), because the red beds in which it is found were interpreted as representing a low

sea stand (18). At that time a single low sea stand was recognized in the early-to-middle Eocene transition (19, 20). It was near the end of the early Eocene; *Pakicetus*-bearing red beds were thought to represent this low sea stand, and *Pakicetus* was thus thought to be late early Eocene in age.

Two low sea stands are now recognized in the early-to-middle Eocene transition (11), one late in the early Eocene and the other early in the middle Eocene (U in Fig. 3). The *Pakicetus*-bearing interval must correspond to the higher of these, because shallow benthic foraminiferan *Assilina spira* of zone SB13 is reported below it in the Subathu section (9), *Assilina exponens* of zone SB14 is reported from the Kuldana Formation at its type section (21), and *Orbitolites complanatus* of zones SB12–16 is reported from the Shekhan Limestone underlying the Kuldana Formation at Panoba (13). The latter is a stratigraphic section through the Chorlakkhi fossil beds where the type cranium of *Pakicetus inachus* was found. This upper low sea stand is now calibrated at approximately 48 million years ago (Ma) using the time scale of Berggren *et al.* (10), meaning that *Pakicetus* is younger than previously thought.

The type specimen of *Himalayacetus* comes from interval IIIc of Mathur (9) in the type section of the Subathu Formation (Fig. 3). Intervals II and IV of Mathur both yield *Nummulites ataticus* of shallow benthic zone SB8. This constrains the age of *H. subathuensis* to between 53 and 54 Ma, or about 53.5 Ma.

#### ENVIRONMENT OF HIMALAYACETUS

*Himalayacetus* also is significant in showing that some whales probably were partially marine very early in the course of cetacean evolution. *Himalayacetus* came from a shallow oyster-bearing marine deposit, whereas *Pakicetus* and the other oldest pakiectids known previously came from continental red beds and were found in association with land mammals (1, 7).

Oxygen isotopes distinguish living freshwater from marine Cetacea (22, 23). Oxygen in a freshwater setting is fractionated—enriched in light  $^{16}\text{O}$  and depleted in heavy  $^{18}\text{O}$ —by comparison with oxygen in marine settings that retain more heavy  $^{18}\text{O}$  (Fig. 4). Oxygen isotopes of Eocene *Pakicetus* and *Nalayacetus* were reported to have freshwater rather than marine values, which led Thewissen *et al.* (24) to conclude that pakiectids, the geologically oldest whales, were not marine.

Interpretation is complicated because the isotopic composition of oxygen in bone and tooth phosphate of land mammals is often heavy (25), reflecting fractionation during respiration and other metabolic processes. Thus, the heavy values seen in *Himalayacetus* and at least some *Pakicetus* can be explained by respiration on land in animals that almost certainly still were amphibious, ingestion of some heavy oxygen in marine water during feeding, or both. Life on land is consistent with recovery of all *Pakicetus* in association with land mammals, and ingestion of heavy oxygen in marine water is consistent with discovery of *Himalayacetus* in association with marine oysters and other mollusks. Interpretation is still ambiguous, but two lines of evidence—recovery in marine strata and heavy oxygen isotopic composition—favor invasion of marine waters early in cetacean history. The origin of whales is commonly explained by the availability of fish as food in highly productive shallow marine waters of eastern Tethys (1), and early pakiectids are likely to have fed on fish in freshwater rivers, mixed estuaries, and shallow marine seas.

#### TIME OF ORIGIN OF WHALES

The difference between the age of *H. subathuensis* and the age of the oldest pakiectids known previously is illustrated graphically in Fig. 5 in the context of hypothesized phylogenetic relationships. Following Van Valen (26), archaeocetes

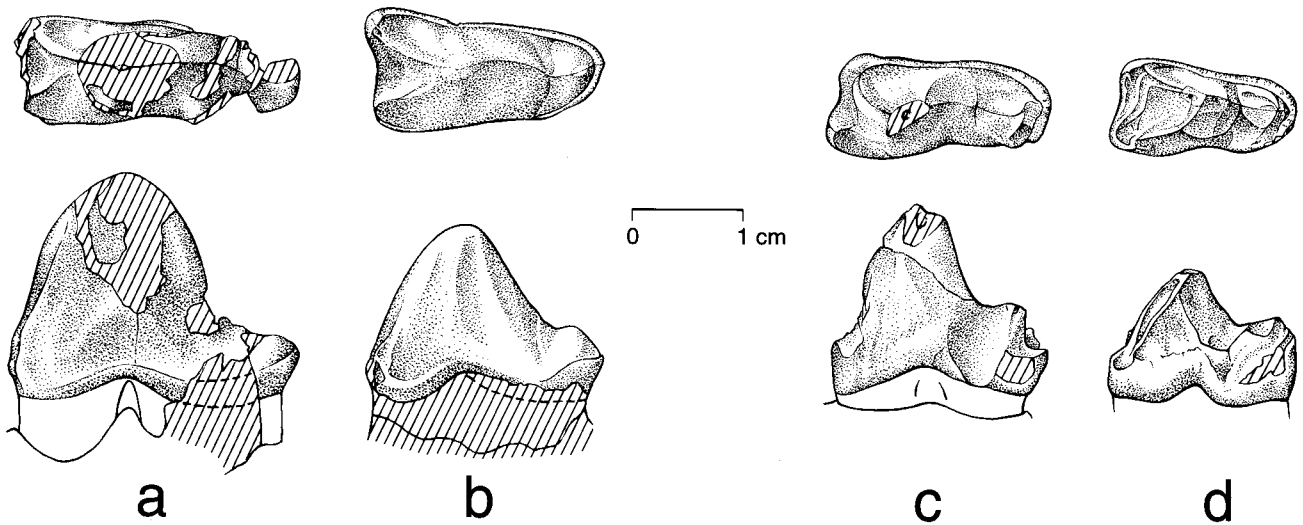


FIG. 2. Teeth of *H. subathuensis* holotype compared with those of pakicetid *Pakicetus attocki* and *Pakicetus inachus*. All teeth are shown in occlusal (Upper) and lateral (Lower) view; anterior is toward the left in all drawings. (a) Crown of left M<sub>2</sub> of *H. subathuensis*, RUSB 2003. (b) Crown of left M<sub>3</sub> of *H. subathuensis*, RUSB 2003. (c) Crown of left M<sub>2</sub> of *P. attocki* (reversed), Howard University–Geological Survey of Pakistan H-GSP 18410 (7). (d) Crown of left M<sub>3</sub> of *P. inachus*, GSP-UM 82 (8). Note the general similarity of molar form seen in *Himalayacetus* and *Pakicetus*. The sulcus on the anterior face of the trigonid is found in all archaeocetes. Differences distinguishing *Himalayacetus* include a larger and more rounded major cusp (protoconid), a smaller and less elevated talonid cusp (hypoconid) on the talonid, and a more anteriorly projecting anteromedial cusp at the base of the trigonid.

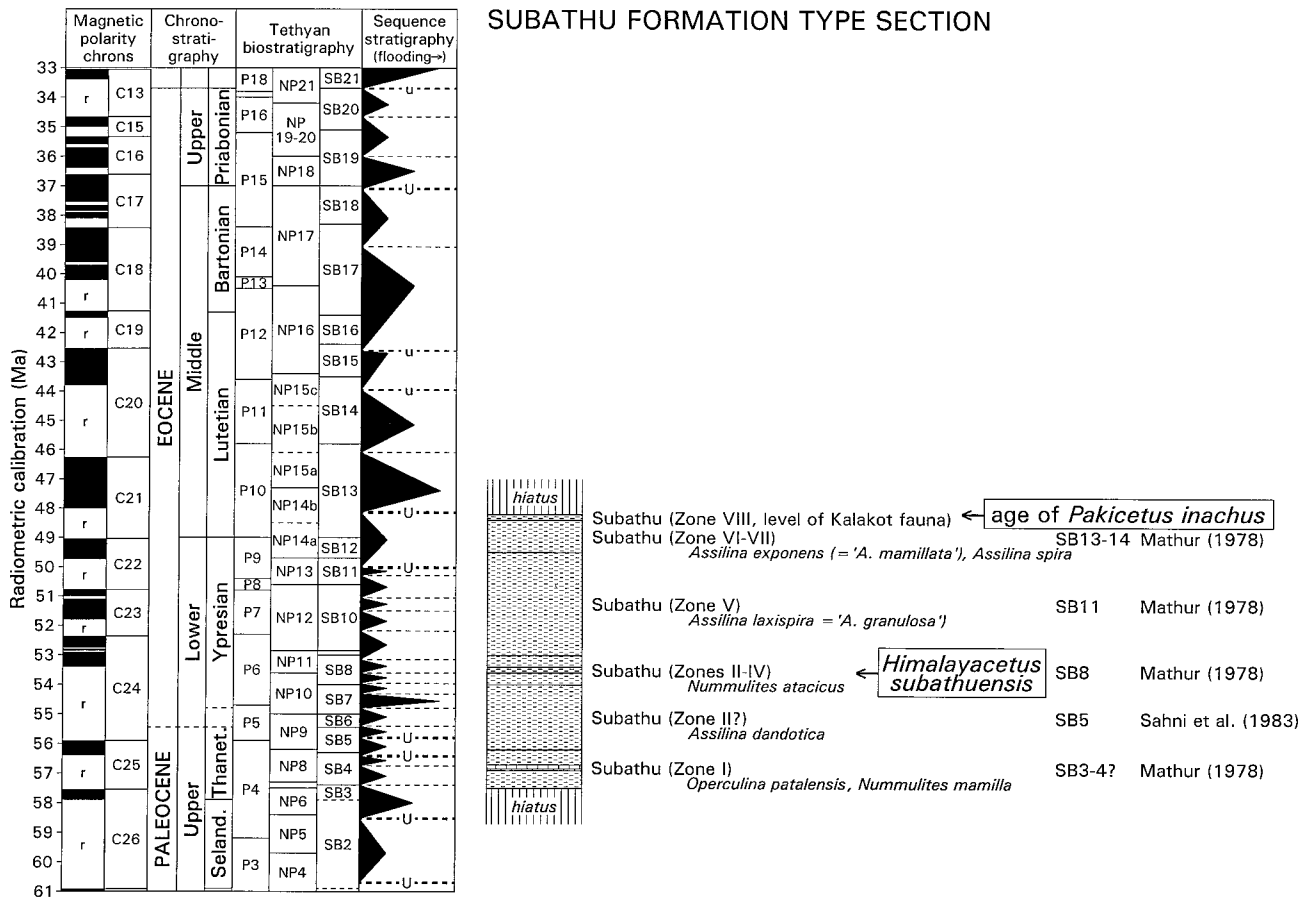


FIG. 3. Correlation chart relating Subathu Formation stratigraphy to the Eocene time scale and showing evidence constraining the geological age of *H. subathuensis*. Time scale, planktonic zonation (P and NP), and radiometric calibration are from Berggren *et al.* (10) as correlated with sea-level sequence stratigraphy by Hardenbol *et al.* (11). Shallow-benthic foraminiferal zonation (SB) is from Serra-Kiel *et al.* (12). Note low sea stands and the positions of major unconformities (U) just before and after the Ypresian–Lutetian early-to-middle Eocene boundary. The Kuldana-Kalakot faunal zone that yields *Pakicetus* in Kashmir and Pakistan (box with arrow) overlies beds with *Assilina exponens* and *Assilina spira* of shallow benthic zones SB13–14 here (9, 12) and beds with *Orbitolites complanatus* of shallow benthic zone SB12 elsewhere (12, 13), indicating that they are early middle Eocene in age. The Subathu zone IIIc marine fauna with *H. subathuensis* (box with arrow) is associated with *Nummulites atacicus* of shallow benthic zone SB8 (9, 12), indicating that *Himalayacetus* is middle early Eocene in age.

CETACEA

- Extant-- Yoshida & Miyazaki (22)
- Extant-- Barrick & al. (23)
- Extant-- Thewissen & al. (24)
- Miocene-- Barrick & al. (23)
- Eocene-- Thewissen & al. (24)
- Eocene-- Thewissen & al. (24)
- Pakicetus inachus*
- Himalayacetus subathuensis*

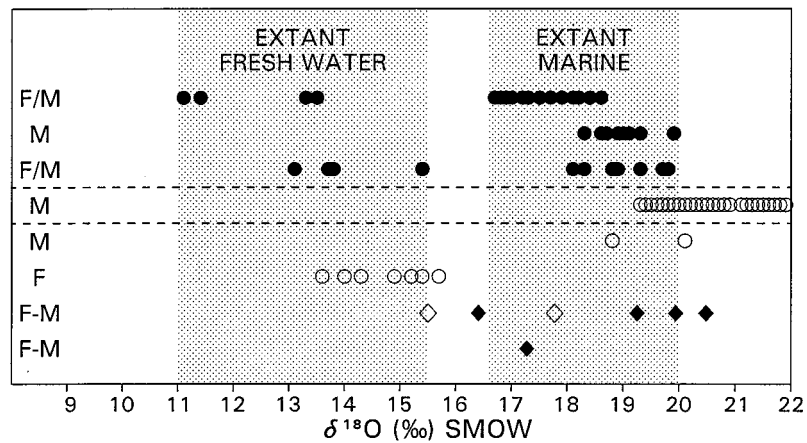


FIG. 4. Isotopic composition of oxygen in bone and tooth phosphate of living and fossil whales. Extant cetaceans living in fresh water have lighter isotopic values in the range of 11–15.5 (parts per thousand  $\delta^{18}\text{O}$  SMOW), whereas those living in marine waters have heavier isotopic values in the range of 16.5–20 (● and shaded areas). Miocene cetaceans have heavy values in the range of 19–22 (○). Few Eocene cetaceans have been reported, and these have been divided into freshwater and marine forms (○). Values for early-middle Eocene *P. inachus* range from 15.5 for juveniles (◇) to 20.5 for adults (◆; A. Goswami and P.D.G., unpublished data). Middle early Eocene *H. subathuensis* tooth-enamel phosphate has a value of 17‰  $\delta^{18}\text{O}$  Standard Mean Ocean Water (SMOW), which is heavier than oxygen found in phosphate of extant and Eocene freshwater cetaceans. *Pakicetus* and *Himalayacetus* are interpreted here as amphibious, spending time on land but ingesting both fresh and marine waters while feeding in rivers, estuaries, and shallow marine Tethys.

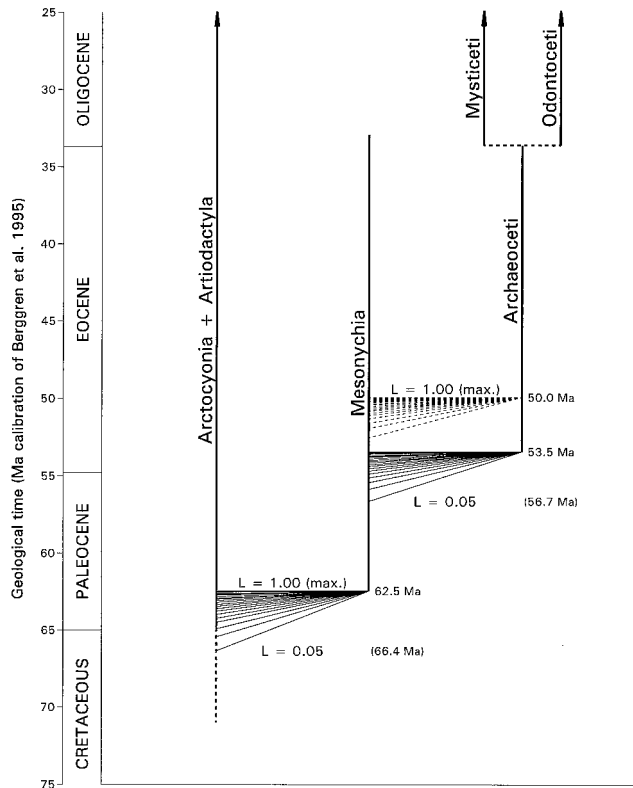


FIG. 5. Outline of phylogenetic relationships of extant Mysticeti and Odontoceti to Eocene Archaeoceti, and through Archaeoceti to earlier Mesonychia and Arctocyonia + Artiodactyla. Discovery of the oldest archaeocete, *H. subathuensis*, reported here extends the time of origin of archaeocetes based on fossils from about 50 to 53.5 Ma (maximum relative likelihood  $L = 1.00$ ). Acceptance of a relative likelihood  $L$  as small as 0.05 extends the time of origin of whales to a reasonable limit of 56.7 Ma near or just before the beginning of Eocene evolutionary time. The fan of solid lines at 53.5 Ma shows likelihoods decreasing from maximum in increments of 0.05 (fan of dashed lines at 50.0 reflects pre-*Himalayacetus* values; ref. 30). The times of divergence of extant sister groups Artiodactyla and Cetacea are unaffected by discovery of *Himalayacetus* and remain in the range of  $\approx 62.5$  Ma (maximum-likelihood  $L = 1.00$ ) to 66.4 Ma ( $L = 0.05$ ), or about the beginning of Cenozoic evolutionary time.

are generally regarded as descendants of Mesonychia, with which they were long confused (14, 27). Archaeoceti, and hence Cetacea, now are known from strata about 3.5 million years older than any known previously.

The origin of a taxon must be at least as early in geological time as the oldest fossil representing the group, and hypotheses of earlier origin can be evaluated in terms of their relative likelihoods (28–30). Previous analysis of 42 independent sites around the world documenting archaeocetes in the time range between 36 and 49.5 Ma yielded a maximum-likelihood time of origin of Cetacea of 49.5 Ma (30), and a 95% confidence limit (28) or relative likelihood  $L = 0.05$  for this estimate of 51.6 Ma (30). Conversion to the current Berggren *et al.* (10) time scale extends these values by about 0.5 million years (fan of dashed lines at 50 Ma reflecting likelihoods decreasing in 0.05 increments).

Discovery of *H. subathuensis* alters the maximum-likelihood time of origin of whales to 53.5 Ma and extends the  $L = 0.05$  confidence limit to 56.7 Ma (Fig. 5), straddling the Paleocene–Eocene boundary (fan of solid lines at 53.5 Ma reflecting likelihoods decreasing in 0.05 increments). The time of divergence of extant Cetacea from extant Artiodactyla is unchanged and lies in the range of 62.5–66.4 Ma, at or near the beginning of the Cenozoic.

The range extension of Archaeoceti back in time represented by *Himalayacetus* had a prior expectation or relative likelihood on the order of only 0.01 ( $10^{-2}$ ) before *Himalayacetus* was found, making this extension unlikely and hence unusually important (although the diversity of pakicetids in the Kuldana fauna and the diversity of other archaeocetes in slightly younger faunas clearly required an earlier origin).

Some systematists using molecular genetic clocks suggest divergence of Cetacea from other orders of mammals in the Mesozoic as early as 100 Ma (31), but the quantified likelihood of such a hypothesis is vanishingly small ( $L \approx 10^{-9}$ ) from the point of view of known fossils and radiometric calibration of the geologic time scale. Resolution of discrepant interpretations of conflicting evidence will be important for understanding both the history of whales (and other mammals) and the dynamics of evolutionary change.

We thank E. Buffetaut, A. Goswami, P. L. Koch, J.-J. Jaeger, J. R. O’Neil, L. Roe, A. Sahni, and J. G. M. Thewissen for discussion and access to comparative specimens. A. Goswami analyzed oxygen iso-

topes of *Himalayacetus*, *Pakicetus*, and other Eocene archaeocetes and land mammals at the University of Michigan. S. B. Bhatia provided information on Subathu biostratigraphy from the unpublished dissertation of H. Bagi. William J. Sanders completed preparation of the holotype, and Bonnie Miljour drew the illustrations in Figs. 1 and 2. Research on archaeocete whales of Eocene Tethys is funded by National Science Foundation Grant EAR-9714923 to P.D.G.

1. Gingerich, P. D., Wells, N. A., Russell, D. E. & Shah, S. M. I. (1983) *Science* **220**, 403–406.
2. Kumar, K. & Sahni, A. (1985) *J. Vert. Paleontol.* **5**, 153–168.
3. Thewissen, J. G. M. & Hussain, S. T. (1993) *Nature (London)* **361**, 444–445.
4. Sahni, A. & Jolly, A. (1993) *Kaupia, Darmstädter Beiträge zur Naturgeschichte, Darmstadt* **3**, 209–222.
5. Srivastava, R. & Kumar, K. (1996) *Palaeogeog. Palaeoclimatol. Palaeoecol.* **122**, 185–211.
6. Zhou, X., Zhai, R., Gingerich, P. D. & Chen, L. (1995) *J. Vert. Paleontol.* **15**, 387–400.
7. Thewissen, J. G. M. & Hussain, S. T. (1998) *Bull. Carnegie Mus. Nat. Hist.* **34**, 220–238.
8. Gingerich, P. D. & Russell, D. E. (1990) *Cont. Mus. Paleontol. Univ. Mich.* **28**, 1–20.
9. Mathur, N. S. (1978) *Recent Res. Geol.* **5**, 96–112.
10. Berggren, W. A., Kent, D. V., Swisher, C. C. & Aubry, M.-P. (1995) in *Geochronology, Time Scales, and Global Stratigraphic Correlations: A Unified Temporal Framework for an Historical Geology*, eds. Berggren, W. A., Kent, D. V., Aubry, M.-P. & Hardenbol, J. A. (Soc. Econ. Geol. Mineral., Tulsa, OK), Special Vol. 54, pp. 129–212.
11. Hardenbol, J. A., Thierry, J., Farley, M. B., Jacquin, T., Graciansky, P.-C. d. & Vail, P. R. (1999) in *Sequence Stratigraphy of European Basins*, eds. Graciansky, P.-C. d., Hardenbol, J. A., Jacquin, T., Vail, P. R. & Farley, M. B. (Soc. Econ. Paleontol. Mineral. Special Publication), in press.
12. Serra-Kiel, J., Hottinger, L., Caus, E., Drobne, K., Ferràndez, C., Jauhri, A. K., Less, G., Pavlovec, R., Pignatti, J. S. J. M., Schaub, H., et al. (1998) *Bull. Soc. Géol. Fr.* **169**, 281–299.
13. Weiss, W. (1993) *Zitteliana (Munich)* **20**, 223–252.
14. Dehm, R. & Oettingen-Spielberg, T. z. (1958) *Abhandlungen der Bayerische Akademie der Wissenschaften, Mathematisch-Naturwissenschaftliche Klasse, München, Neue Folge* **91**, 1–54.
15. Thewissen, J. G. M., Madar, S. I. & Hussain, S. T. (1996) *Courier Forschungsinstitut Senckenberg, Frankfurt am Main* **191**, 1–86.
16. West, R. M. (1980) *J. Paleontol.* **54**, 508–533.
17. Gingerich, P. D. & Russell, D. E. (1981) *Cont. Mus. Paleontol. Univ. Mich.* **25**, 235–246.
18. Wells, N. A. (1983) *Special Publication of the International Association of Sedimentologists* **6**, 393–403.
19. Vail, P. R. & Hardenbol, J. A. (1979) *Oceanus* **22**, 71–79.
20. Haq, B. u., Hardenbol, J. A. & Vail, P. R. (1987) *Science* **235**, 1156–1167.
21. Latif, M. A. (1970c) *Jahrbuch der Geologischen Bundesanstalt, Sonderband, Wien* **15**, 63–66.
22. Yoshida, N. & Miyazaki, N. (1991) *J. Geophys. Res.* **96**, 815–820.
23. Barrick, R. E., Fischer, A. G., Kolodny, Y., Luz, B. & Bohaska, D. J. (1992) *Palaios* **7**, 521–531.
24. Thewissen, J. G. M., Roe, L. J., O'Neil, J. R., Hussain, S. T., Sahni, A. & Bajpai, S. (1996) *Nature (London)* **381**, 379–380.
25. Fricke, H. C., Clyde, W. C., O'Neil, J. R. & Gingerich, P. D. (1998) *Earth Planet. Sci. Lett.* **160**, 193–208.
26. Van Valen, L. M. (1966) *Bull. Am. Mus. Nat. Hist.* **132**, 1–126.
27. Szalay, F. S. & Gould, S. J. (1966) *Bull. Am. Mus. Nat. Hist.* **132**, 127–174.
28. Strauss, D. J. & Sadler, P. M. (1989) *Math. Geol.* **21**, 411–427.
29. Edwards, A. W. F. (1992) *Likelihood, Expanded Edition* (Johns Hopkins Univ. Press, Baltimore), pp. 1–275.
30. Gingerich, P. D. & Uhen, M. D. (1998) *Palaeontologia Electronica* **1(2)**, 1–45 [[http://www-odp.tamu.edu/paleo/1998.2/ging\\_uhen/issue2.htm](http://www-odp.tamu.edu/paleo/1998.2/ging_uhen/issue2.htm)].
31. Hedges, S. B., Parker, P. H., Sibley, C. G. & Kumar, S. (1996) *Nature (London)* **381**, 226–229.