

Kinetics of Transcription Initiation at *lacP1*

MULTIPLE ROLES OF CYCLIC AMP RECEPTOR PROTEIN*

Received for publication, June 6, 2003, and in revised form, July 21, 2003
Published, JBC Papers in Press, July 23, 2003, DOI 10.1074/jbc.M305995200Mofang Liu^{‡§}, Geeta Gupte[‡], Siddhartha Roy^{‡¶}, Rajiv P. Bandwar[¶], Smita S. Patel[¶],
and Susan Garges[‡]

From the [‡]Laboratory of Molecular Biology, Center for Cancer Research, NCI, National Institutes of Health, Bethesda, Maryland 20892-4264, the [¶]Department of Biophysics, Bose Institute, P-1/12, C.I.T. Scheme VII M, Calcutta 700 054, India, and the [¶]Department of Biochemistry, Robert Wood Johnson Medical School, Piscataway, New Jersey 08854

The cyclic AMP receptor protein (CRP) acts as a transcription activator at many promoters of *Escherichia coli*. We have examined the kinetics of open complex formation at the *lacP1* promoter using tryptophan fluorescence of RNA polymerase and DNA fragments with 2-aminopurine substituted at specific positions. Apart from the closed complex formation and promoter clearance, we were able to detect three steps. The first step after the closed complex formation leads to a rapid increase of 2-aminopurine fluorescence. This was followed by another rapid step in which quenching of tryptophan fluorescence of RNA polymerase was observed. The slowest step detected by 2-aminopurine fluorescence increase is assigned to the final open complex formation. We have found that CRP not only enhances RNA polymerase binding at the promoter, but also enhances the slowest isomerization step by about 2-fold. Furthermore, potassium permanganate probing shows that the conformation of the open complex in the presence of CRP appears qualitatively and quantitatively different from that in the absence of CRP, suggesting that contact with RNA polymerase is maintained throughout the transcription initiation.

Most transcription activation occurs during the initiation process. Transcription initiation can be divided into a number of steps (1–4), and theoretically activation can occur by affecting any one of them. Recruitment of RNA polymerase (RNAP)¹ to a promoter is, of course, the first step in transcription initiation, which is followed by a series of isomerization steps. Despite recent availability of a great deal of structural information on RNA polymerase, elucidation of the process of open complex formation remains a major goal. It is difficult to obtain structural information about these intermediates as they are transiently populated during transcription initiation. Most of the information about the intermediates was obtained indirectly, and little is known about the intervening transition states. A direct method of studying the kinetics of isomeriza-

tion steps would significantly help the dissection of the transcription initiation process.

The cyclic AMP receptor protein (CRP) can activate the transcription of a large number of operons of *Escherichia coli* (5, 6). To activate transcription, CRP binds to a specific DNA site located upstream from a promoter and interacts with RNAP. CRP activates transcription by using two different modes of RNAP interaction. In most cases, CRP activates transcription from a point about 40 bp upstream of the start of transcription, but in others it interacts from a point at least 6 turns of DNA helix upstream from the transcription start site. The interaction points between CRP and RNAP are different depending on whether CRP is activating from the 40-bp upstream site or the other site. CRP was first identified as a transcription activator of the *lac* operon, where CRP binds at a site located 61.5 bp upstream of the start of transcription. From this site, CRP interacts with the α subunit of RNAP and helps recruit RNAP to the promoter. Whether the sole function of CRP at the *lac* promoter is to help RNAP bind to the promoter remains to be seen.

The kinetics of transcription initiation by CRP at the *lac* promoter was examined by Malan *et al.* (7). By using abortive initiation studies, they found that CRP increased the K_B of RNAP binding to the *lac* promoter but had no effect on the subsequent isomerization step. However, some later results suggested effects of CRP beyond the recruitment step, and hence we decided to take a more direct approach and measure the rates of different steps in isomerization by tryptophan fluorescence and fluorescence of the base analog 2-aminopurine (2-AP) incorporated into the DNA of the *lac* promoter. In this article we report kinetics of several isomerization steps and influence of CRP on each of them.

EXPERIMENTAL PROCEDURES

Preparation of DNA Templates Containing 2-AP—Both normal and single 2-AP incorporated DNA templates were amplified by PCR. First, the ~1.1-kb *lac* operon fragment was amplified from *E. coli* MG1655 genomic DNA. By using this DNA fragment as the template with the synthetic oligodeoxynucleotides as forward primers (83 bases, Fig. 1), 778-bp DNA fragments (78 bp upstream sequence and 700 bp downstream sequence of the *lac* operon) containing the *lac* promoter were amplified. To abolish the activity of the P2 promoter of *lac*, a mutation at $-29C \rightarrow T$ was introduced at the promoter (8).

Separation of PCR DNA Fragment from PCR Mixture—After 4-fold dilution by 1× TE buffer (10 mM Tris-HCl, pH 8.0, 0.1 mM EDTA), the PCR mixture was loaded on a Resource Q column (Amersham Biosciences), which was pre-equilibrated with TE buffer. After loading, the column was washed with 20 ml of TE buffer. Then two gradients (the first from 0 to 0.5 M NaCl in 10 ml of TE buffer and the second from 0.5 to 0.65 M NaCl in 30 ml of TE buffer) were used to elute the PCR DNA fragment from the Resource Q column at 1 ml/min.

Proteins—RNAP was purified from *E. coli* K-12 cells (MG1655) as

* This work was supported by National Institutes of Health Grant GM51966 (to S. S. P.). The costs of publication of this article were defrayed in part by the payment of page charges. This article must therefore be hereby marked "advertisement" in accordance with 18 U.S.C. Section 1734 solely to indicate this fact.

§ To whom correspondence should be addressed: Laboratory of Molecular Biology, NCI, 37 Convent Dr., Rm. 5138, Bethesda, MD 20892-4264. Tel.: 301-451-8820; Fax: 301-496-2212; E-mail: liumo@pop.nci.nih.gov.

¹ The abbreviations used are: RNAP, RNA polymerase; 2-AP, 2-aminopurine; CRP, cyclic AMP receptor protein; dsDNA, double-stranded DNA.

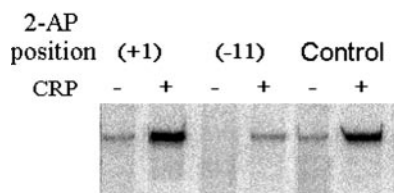


FIG. 2. The effect of 2-AP labeling on the *lac* promoter activity on transcription *in vitro*. The templates (778 bp) were made by PCR amplification as described under “Experimental Procedures.” Substitution of position -11 from A to 2-AP almost totally abolished promoter activity, but there was no obvious effect of the 2-AP replacement at position +1.

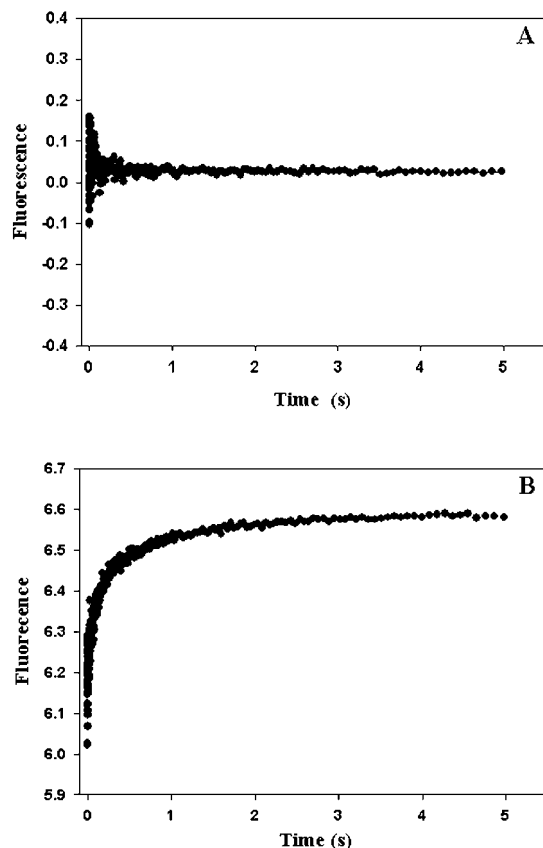


FIG. 3. 2-AP destroyed the promoter activity when located at position -11 of the *lac* promoter. The interaction between RNA polymerase (100 nM) and 778-bp PCR-amplified 2-AP-containing *lac* promoter DNA (100 nM) was followed by 2-AP fluorescence change (excitation at 315 nm and emission at ≥ 360 nm) at 25 °C in a stopped-flow system. Shown is the time course. A, 2-AP located at position -11 of the *lac* promoter. B, 2-AP located at position +1 of the *lac* promoter.

Studies of the Effect of CRP on Open Complex Formation by Stopped-flow Kinetics and Manual Mixing—We used 2-AP fluorescence changes upon DNA strand separation to measure the kinetics of DNA binding and formation of open complex in a fluorometer equipped with stopped-flow capability. A 2-AP-modified and PCR-amplified DNA in which the 2-AP was located at position +1 of the *lac* promoter was chosen to use in this stopped-flow kinetics study. The representative kinetic traces are shown in Fig. 4, in which DNA (35 nM) was mixed with RNAP (550 nM) either in the absence (Fig. 4A) or presence of CRP (Fig. 4B). The fluorescence was excited at 315 nm and measured after passage through a 360-nm cut-off filter; 1000 points were accumulated over the 500-ms time course of the experiment. The data set fits very well in a single exponential, three-parameter equation, as described under “Experimental Procedures.” An observed rate constant (k_{obs}) was obtained from

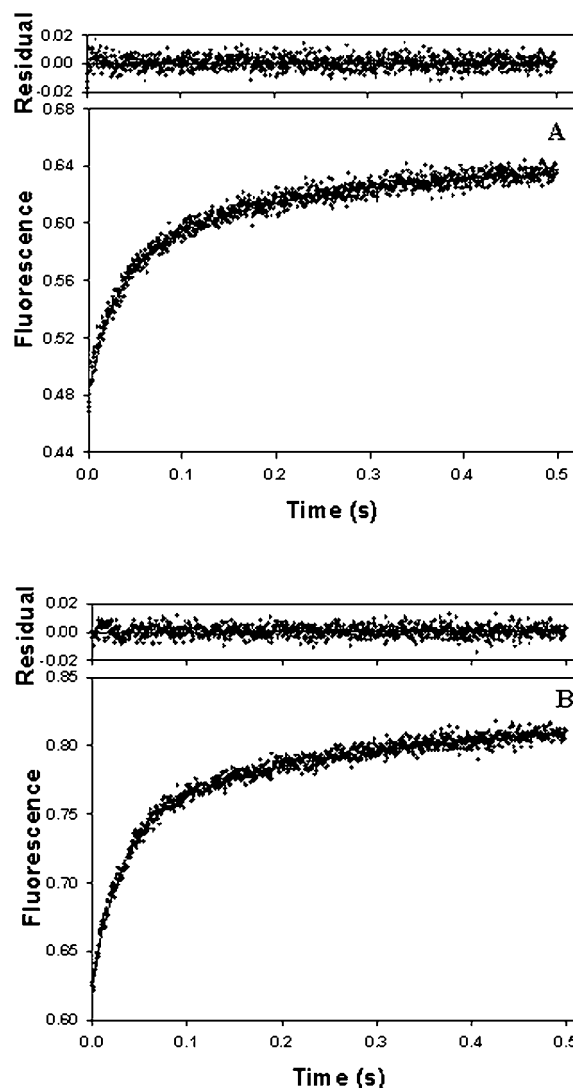
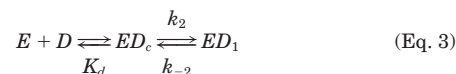


FIG. 4. Time dependence of the increase in fluorescence upon rapid mixing of RNAP with the 2-AP-labeled *lac* promoter with or without CRP. Reaction mixture contained 35 nM DNA (778-bp PCR-amplified fragments), 0.1 mM cAMP, 50 mM sodium acetate, 10 mM magnesium acetate, 50 mM Tris acetate, pH 7.5, 1 mM dithiothreitol, and 550 nM RNAP. The fluorescence at $\lambda \geq 360$ nm was monitored as a function of time with continuous excitation at 315 nm. The kinetic traces obtained under pseudo-first-order conditions from an average of 10 shots in each experiment were fitted to a single exponential, $F = A(1 - \exp(-k_{\text{obs}}t)) + C$, which provided a $k_{\text{obs}} = 12.39 \text{ s}^{-1}$ in the absence of CRP (A) and a $k_{\text{obs}} = 13.67 \text{ s}^{-1}$ in the presence of CRP (B). The residuals from the fit are shown at the top.

the curve drawn through the data points. At 550 nM RNAP, CRP had minor effect on the second step, increasing the rate constant slightly from $12.39 \text{ (s}^{-1}\text{)}$ (Fig. 4A) to $13.67 \text{ (s}^{-1}\text{)}$ (Fig. 4B).

The rate of complex formation at 25 °C on the 2-AP containing template (35 nM) as a function of the RNAP concentration (200–1000 nM) either in the presence or in the absence of CRP is shown in Fig. 5. The corresponding plots fit very well to a hyperbolic equation, suggesting there are at least two steps in the DNA binding pathway, and two *ED* complexes are formed sequentially as shown in Equation 3,



where *E* is the RNAP; *D* is the dsDNA promoter; *ED_c* is the closed complex; and *ED₁* is the intermediate complex. K_d , k_2 , and k_{-2} are the kinetic constants for the above reaction. K_d

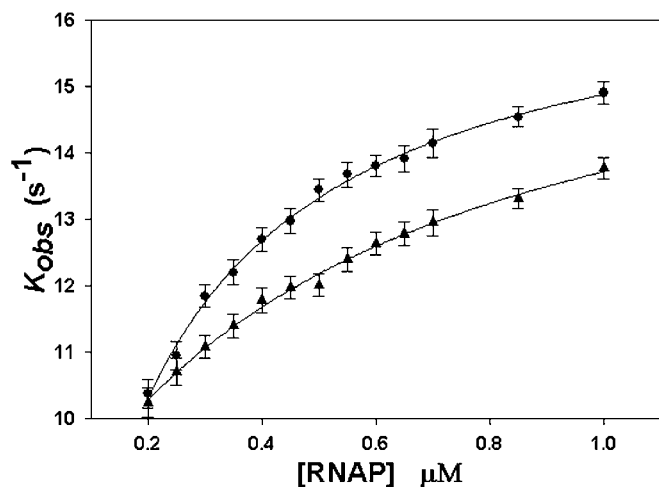


FIG. 5. Dependence of observed rate constants (k_{obs}) of fluorescence increase obtained from stopped-flow experiments at the *lac* promoter on the concentration of RNAP. The error bars represent standard deviations determined from averaging 10 shots at each RNAP concentration. The dependence of k_{obs} on RNAP concentration was fit to the hyperbolic equation $k_{\text{obs}} = k_2 [\text{RNAP}] / (K_d + [\text{RNAP}]) + k_{-2}$. \blacktriangle , without CRP; \bullet , with CRP.

represents the equilibrium dissociation constant for RNAP (E) on the promoter (D) that forms the closed complex (ED_c); k_2 and k_{-2} represent the rate constants for the isomerization reaction and reverse reaction, respectively. The values of the kinetic constants (Table I) were obtained by fitting the dependence to the hyperbolic Equation 2.

As shown in Fig. 5 and Table I, CRP increases RNAP binding on the *lac* promoter about 4-fold, enhances the rate of the immediate isomerization step about 1.7-fold, and decreases the rate of the reverse step reaction about 4.5-fold. The stopped-flow experiments were repeated with unlabeled template while monitoring the tryptophan fluorescence of RNA polymerase. There is a quenching of tryptophan fluorescence, which can be fitted to a single exponential. This rate is significantly slower than 2-AP fluorescence increase rate, suggesting that this step follows the step in which 2-AP fluorescence increase occurs (Fig. 6 and Table I)

We cannot estimate rate constant accurately through a longer time course on the stopped-flow instrument because of bleaching or drift problems occurring at extended times. So 2-AP fluorescence increase at the longer time course was monitored in a manual mixing experiment by a spectrofluorometer. The fluorescence increase occurs over a time frame of minutes indicating a slow step at which a further increase of 2-AP fluorescence occurs. The fluorescence increases both in the absence and in the presence of CRP and can be fitted to a single exponential. The obtained rate constants are 1.75×10^{-3} and $3.04 \times 10^{-3} \text{ s}^{-1}$, in the absence and the presence of CRP, respectively (Fig. 7). This is very likely to be the step that involves formation of open complex for two reasons. 1) After about 5 half-lives of the reaction, addition of NTPs causes promoter clearance as assayed by quenching of 2-AP fluorescence. 2) The rate constant of this step is very similar to that obtained from abortive initiation data by Malan *et al.* (7) ($3 \times 10^{-3} \text{ s}^{-1}$). The relative amplitudes are estimated to be about 44% of total fluorescence change for the fast phase and 56% of total fluorescence change for the slow phase. These values were obtained from the extended time stopped-flow experiments, in which we used the template with 2-AP labeled at position +1 and a control experiment to correct for the machine drift and bleaching (data not shown).

No Effect of CRP on Promoter Clearance—As an assay for

TABLE I
Kinetics constant for interaction of RNAP and the *lac* promoter

Rate constants	+CRP	-CRP
K_d (μM) ^a	0.15 ± 0.03	0.56 ± 0.09
Determined by stopped-flow		
k_2 (s^{-1})	15.14 ± 0.14	9.10 ± 0.23
k_{-2} (s^{-1})	1.78 ± 0.16	7.86 ± 0.32
k_3 (s^{-1}) ^b	2.5	3.3
Determined by manual mixing		
k_4 (s^{-1}) ^b	3.04×10^{-3}	1.75×10^{-3}

^a The dissociation constant was calculated from RNA polymerase concentration dependence of 2-AP fluorescence increase in the stopped-flow experiment.

^b See Equation 6 for definition.

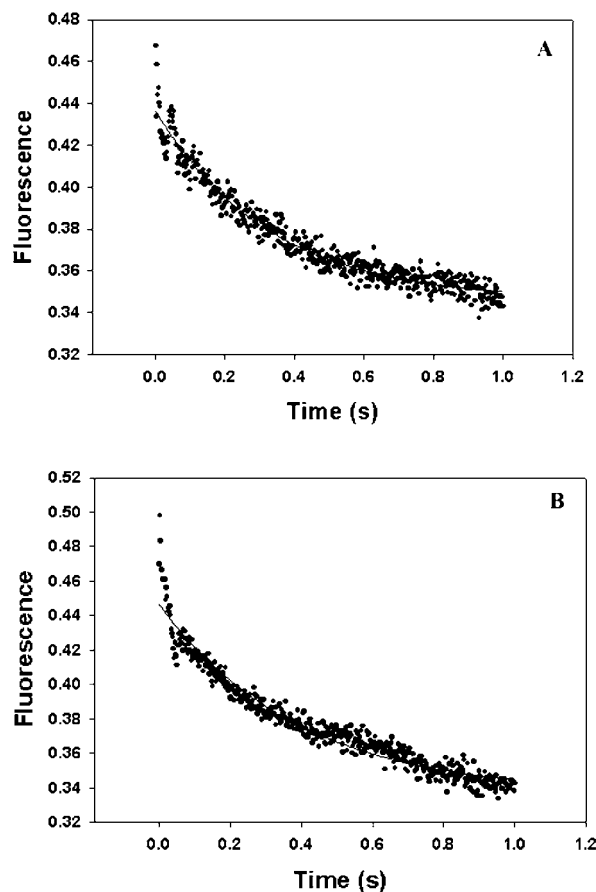


FIG. 6. Time dependence of fluorescence quenching upon rapid mixing of RNAP with the unlabeled *lac* promoter with or without CRP. Reaction mixture contained 35 nM DNA (778-bp PCR-amplified fragments), 0.1 mM cAMP, 50 mM sodium acetate, 10 mM magnesium acetate, 50 mM Tris acetate, pH 7.5, 1 mM dithiothreitol, and 500 nM RNAP. The fluorescence at $\lambda \geq 305 \text{ nm}$ was monitored as a function of time with continuous excitation at 283 nm.

promoter clearance, we also used the stopped-flow apparatus to measure the rate of promoter annealing upon addition of four NTPs to preformed open complexes. The open complex has a higher fluorescence than the free dsDNA. After RNAP was cleared from the promoter, a time-dependent decrease in fluorescence was observed either in the presence or the absence of CRP (Fig. 8). By using the single exponential Equation 1, two similar values of k_{obs} were obtained either with CRP or without CRP, suggesting no effect of CRP on promoter clearance. But the observed amplitude is different. In the presence of CRP, $A = 0.052$ (Fig. 8B); in the absence of CRP, $A = 0.041$ (Fig. 8A), indicating more open complex available in the presence of CRP.

Using Permanganate to Detect Open Complexes—Potassium

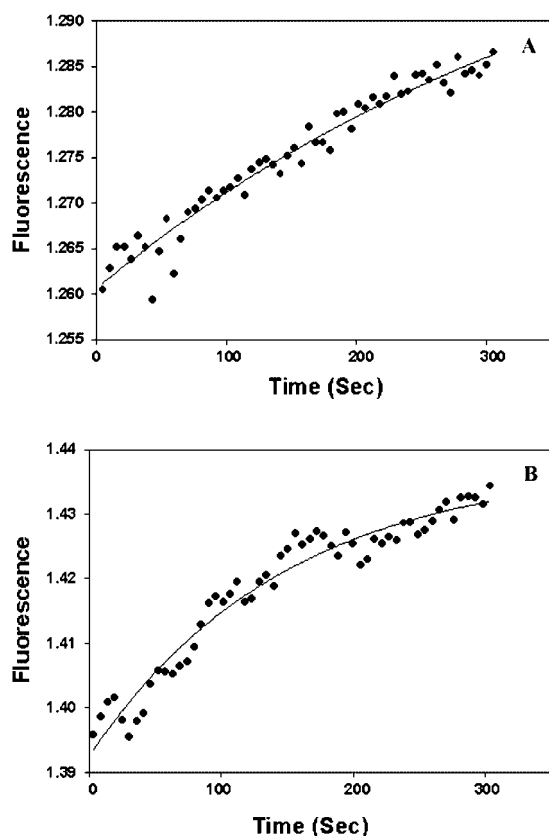


FIG. 7. Fluorescence increase of +1 2-AP-labeled promoter DNA upon manually mixing with RNA polymerase in the absence (A) and in the presence (B) of CRP. Samples were excited at 315 nm (10 nm slit width), and the emission spectra of 370 nm (10 nm slit width) were measured at 25 °C. Experimental details are described under "Experimental Procedures."

permanganate (KMnO_4) has been shown previously (21) to oxidize pyrimidine residues, and the oxidation preferentially targets thymine residues in single-stranded DNA or distorted regions of the duplex. Therefore, permanganate probing is an efficient tool to detect various transcription complexes and study the mechanism of transcription factors (13).

The primer extension pattern obtained when KMnO_4 was used to modify the *lac* promoter either in the presence or the absence of CRP is shown in Fig. 9. Specifically, bands at -11, +1, +13, +15, and +16 along the bottom strand (Fig. 9A) become reactive both in the presence of RNAP and RNAP + CRP, but the intensities of these bands in the presence of CRP (Fig. 9A, lane 7) are about 2–8-fold for those without CRP (Fig. 9A, lane 6). The thymine residue at +2 appeared to be specifically reactive when CRP was present. In the top strand (Fig. 9B), compared with the control (Fig. 9B, lane 5), the thymine residues at -36, -35, -34, -28, -8, -7, -3, +3, and +4 exhibited hyperreactivity to permanganate either in the presence (Fig. 9B, lane 7) or the absence of CRP (Fig. 9B, lane 6), but the stops at these positions are stronger in the presence of CRP. In addition, bands at -29, -27, -22, -21, -15, -12, -10, and -5 occurred specifically or much more strongly in the presence of CRP. A similar result has been obtained at 25 °C (Fig. 9C). The results suggest that, in the presence of CRP, more transcription complexes are formed, and the conformation of those complexes might be different from those formed in the absence of CRP. The conformation of the promoter DNA might be changed by binding of CRP, which resulted in some of the bases becoming more easily accessible to KMnO_4 .

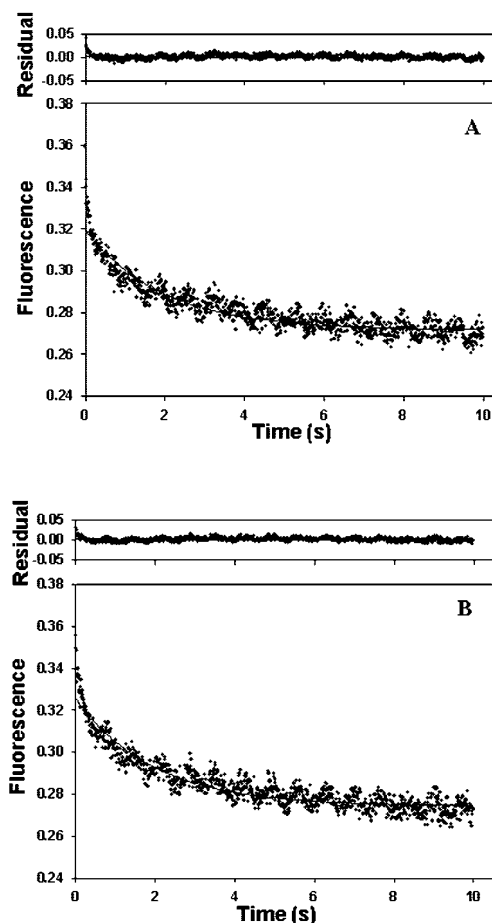


FIG. 8. Time-dependent loss of the fluorescence signal upon mixing NTPs with preformed open complexes without or with CRP. The preformed open complex (35 nM DNA (778-bp PCR-amplified fragments), 500 nM RNAP \pm 250 nM CRP) was reacted with a mixture of NTPs at 200 μM each and 50 $\mu\text{g/ml}$ heparin at 25 °C. The fluorescence was excited at 315 nm and measured after passage through a 360-nm cut-off filter. One thousand data points were accumulated over the 10-s time course of the experiment. The kinetic traces from an average of 10 shots in each experiment were fit to a single exponential $F = A(1 - \exp(-k_{\text{obs}}t)) + C$. A, without CRP, the k_{obs} is 0.5100 s^{-1} . B, with CRP, the k_{obs} is 0.5198 s^{-1} .

DISCUSSION

We have re-examined the kinetics of transcription initiation of the *lac* promoter with and without CRP using 2-AP fluorescence increase kinetics, a direct measure for binding and isomerization. We emphasize here that fluorescence increase amplitudes of the steps are functions of quantum yields of the initial and final states, which may be affected by presence of CRP. Hence, it is difficult to relate the amplitudes to reaction progress or structure. The base analog 2-AP substituted for adenine at +1 position in the *lac* promoter without affecting promoter activity. The exception was substitution at -11 where the *lac* promoter activity was completely obliterated. Lim *et al.* (20) found the same phenomenon when substituting for the adenine at -11 of the *gal* promoter. The (+1) 2-AP-substituted template was used for the detailed kinetic study here. This template was used for stopped-flow experiments to obtain information about the binding step and an early isomerization step. Manual mixing experiments were used to obtain information about a slower step. Tryptophan fluorescence of RNA polymerase was used to obtain information about another early isomerization step, probably involving major conformational change in the polymerase. Finally, by addition of NTPs after open complex formation we were able to assay the promoter clearance step.

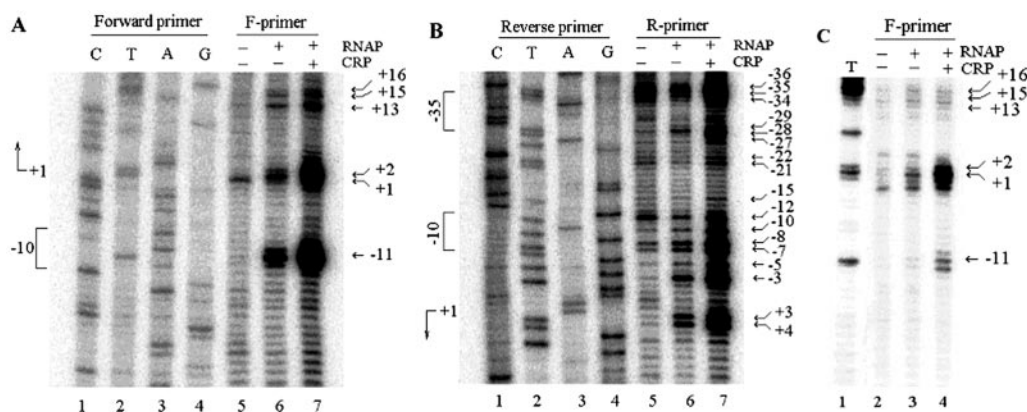
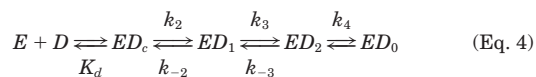


FIG. 9. KMnO_4 probing of the region of the *lac* promoter opened by RNAP in the presence or the absence of CRP. A, primer extension analysis of the bottom strand at 37 °C. B, primer extension analysis of the top strand at 37 °C. C, primer extension analysis of the bottom strand at 25 °C. Lanes 1–4 in A and B and lane 1 in C are the sequences of the *lac* promoter; lanes 5–7 in A and B and lanes 2–4 in C represent the determination of the positions of modification of the promoter without protein, with RNAP, and with both RNAP and CRP, respectively. Positions of the modification are labeled. The DNA template used is 778-bp PCR-amplified fragments.

By using (+1) 2-AP-substituted *lac* promoter DNA, we were able to measure the dissociation constant for the closed complex formation, which is 5.6×10^{-7} M in the absence of CRP. Record and co-workers (22) have determined a value of 3.7×10^{-8} M at 28 °C for the λ - P_R promoter under similar conditions. In the presence of CRP, the dissociation constant reduces about 4-fold to 1.5×10^{-7} M. Clearly, CRP strongly augments the recruitment step, and in its presence the dissociation constant becomes comparable with that of a strong promoter like λ - P_R . Malan *et al.* (7) obtained K_B values for the *lacP1* from abortive initiation data at 37 °C, which are $\sim 7 \times 10^{-8}$ and 5×10^{-9} (K_B^{-1}), without and with CRP, respectively. These values differ from our current estimate by approximately an order of magnitude. The two sets of values are difficult to compare as our templates contained T29C mutation and was conducted in 25 °C. In addition, no error estimate was given for the kinetic parameters obtained by abortive initiation. Because our values are derived by a direct assay on a template containing a *lacP2*⁻ mutation, it is likely to be more reliable.

The stopped-flow experiments also indicate the presence of a rapid isomerization step in which the fluorescence of 2-AP increases with a forward rate constant of 9.1 and 15.1 s⁻¹, without and with CRP, respectively. When the stopped-flow experiments were followed by tryptophan fluorescence of RNA polymerase, we observe a rapid quenching of tryptophan fluorescence with a rate constant of 2.4 and 1.76 s⁻¹, with and without CRP, respectively. A fourth step can be measured from increase in 2-AP fluorescence by manual mixing experiments, which is assigned to the attainment of the catalytically competent open complex. The rate constants for this step in the absence and in the presence of CRP are 1.75×10^{-3} and 3.04×10^{-3} s⁻¹, respectively. A complete kinetic scheme is shown in Equation 4.



The most interesting part of the kinetic profile of open complex formation at the *lac* promoter is the detection of an early step in which an increase of 2-AP fluorescence occurs. It is generally believed that fluorescence of 2-AP is significantly quenched in the stacked conformation within B-DNA and some deformation of the double helix is a pre-condition for relief of the quenching. This would suggest a significant deformation of the double helix, at least around (+1), occurs at a very early step of the pathway. Based on current structural data it has been proposed that a significant DNA distortion around the

-10 region is necessary for binding of polymerase to both upstream and downstream regions during the early part of the pathway (22). It is possible that this distortion is propagated to the +1 region. It is interesting that the substitution of 2-AP at -11 leads to a very early block. Recent work from deHaseth and co-workers (23) suggests that 2-AP at that position may be immobilized in an RNA polymerase pocket. One possibility is that flipping of -11 adenine and interaction with RNA polymerase is necessary for the DNA distortion that is blocked by -11 2-AP substitution. However, other models of early promoter-polymerase interaction may explain this early conformational change in the promoter DNA as well.

The potassium permanganate results show that there are increases in reactivity in the presence of CRP and RNAP compared with RNAP alone. Importantly, the differences are not only in magnitude but show that bases at -11, -3, -5, +1, +2, +3, and +4 have disproportionately more reactivity in the presence of CRP and RNAP. There are changes detected by the potassium permanganate probing in between the -10 and the -35 seen in the presence of CRP that are not seen in its absence. Thus, the increase in band intensities are not merely due to the presence of a greater amount of open complex in the population but likely to be due to CRP-polymerase contact preserved in the open complex. Several authors including Straney *et al.* (24) found stabilization of the open complex at *lac* by CRP; our results are consistent with theirs. Previously, we have proposed that activators that increase the K_B act by establishing contact between the activator and polymerase during the first ternary complex, and this contact may be preserved throughout or may even be strengthened (25). This appears to occur in CRP activation of the *lacP1* promoter. ED_c is stabilized relative to the unbound form, and ED_1 is also stabilized relative to the ED_c form indicating further enhancement of CRP-polymerase interaction. Although we do not know if any further stabilization occurs, the great deal of enhancement of permanganate sensitivity cannot rule that out. It is also instructive that CRP can partially overcome the block that results from substitution of -11 adenine by 2-AP, consistent with a broad role in the isomerization process.

A previous report (7) on measuring the kinetic parameters of transcription initiation at the *lac* promoter found that CRP affected only the binding of RNAP to the promoter. In our study, we have found that at 25 °C CRP indeed increases the binding of RNAP to the *lac* promoter but also affects the promoter isomerization step. The effect of CRP on RNAP binding is to decrease the K_d value about 4-fold. The effect of CRP on

the slowest step of isomerization is about 2-fold. However, a great deal of stabilization of the open complex occurs in the presence of CRP. A simulation with kinetic parameters suggests that these multistep changes may lead to a total 15–20-fold enhancement of promoter activity. Thus, it is possible now to account for a large part of the 40-fold activation level obtained in *in vivo* stimulation. Because all of our studies were conducted at 25 °C, in a strict sense the mechanism is valid at 25 °C.

Acknowledgments—We are grateful to Drs. Thomas Record and Ranjan Sen for critical comments on the manuscript and to Drs. Sankar Adhya, Ding Jin, and Maxim Sukhodolets for many helpful discussions. We thank Dr. Suresh Ambudkar for the use of the stopped-flow instrument, Dr. Yiping Jia for helpful advice on data analysis, and Anna Mazzuca for secretarial and editorial assistance.

REFERENCES

1. Chamberlin, M. J. (1974) *Annu. Rev. Biochem.* **43**, 721–775
2. McClure, W. R. (1980) *Proc. Natl. Acad. Sci. U. S. A.* **77**, 5634–5638
3. McClure, W. R. (1985) *Annu. Rev. Biochem.* **54**, 171–204
4. Record, T. M., Jr., Reznikoff, W. S., Craig, M. L., McQuade, K. L., and Schlax, P. J. (1996) in *Escherichia coli and Salmonella: Cellular and Molecular Biology* (Neidhardt, F. C., ed) pp. 792–820, American Society for Microbiology, Washington, D. C.
5. Kolb, A., Busby, S., Buc, H., Garges, S., and Adhya, S. (1993) *Annu. Rev. Biochem.* **62**, 749–795
6. Busby, S., and Ebright, R. H. (1999) *J. Mol. Biol.* **293**, 199–213
7. Malan, T. P., Kolb, A., Buc, H., and McClure, W. R. (1984) *J. Mol. Biol.* **180**, 881–909
8. Donnelly, C. E., and Reznikoff, W. S. (1987) *J. Bacteriol.* **169**, 1812–1817
9. Sukhodolets, M. V., and Jin, D. J. (1998) *J. Biol. Chem.* **273**, 7018–7023
10. Lowe, P. A., Hager, D. A., and Burgess, R. R. (1979) *Biochemistry* **18**, 1344–1352
11. Ryu, S., Kim, J., Adhya, S., and Garges, S. (1993) *Proc. Natl. Acad. Sci. U. S. A.* **90**, 75–79
12. Bandwar, R. P., and Patel, S. S. (2001) *J. Biol. Chem.* **276**, 14075–14082
13. Sasse-Dwight, S., and Gralla, J. D. (1989) *J. Biol. Chem.* **264**, 8074–8081
14. Sullivan, J. J., Bjornson, K. P., Sowers, L. C., and deHaseth, P. L. (1997) *Biochemistry* **36**, 8005–8012
15. Sowers, L. C., Fazakerley, G. V., Eritja, R., Kaplan, B. E., and Goodman, M. F. (1986) *Proc. Natl. Acad. Sci. U. S. A.* **83**, 5434–5438
16. McLaughlin, L. W., Benseler, F., Graeser, E., Piel, N., and Scholtissek, S. (1987) *Biochemistry* **26**, 7238–7245
17. Nordlund, T. M., Andersson, S., Nilsson, L., Rigler, R., Graslund, A., and McLaughlin, L. W. (1989) *Biochemistry* **28**, 9095–9103
18. Wu, P. G., Nordlund, T. M., Gildea, B., and McLaughlin, L. W. (1990) *Biochemistry* **29**, 6508–6514
19. Xu, D., Evans, K. O., and Nordlund, T. M. (1994) *Biochemistry* **33**, 9592–9599
20. Lim, H. M., Lee, H. J., Roy, S., and Adhya, S. (2001) *Proc. Natl. Acad. Sci. U. S. A.* **98**, 14849–14852
21. Hayatsu, H., and Ukita, T. (1967) *Biochem. Biophys. Res. Commun.* **29**, 556–561
22. Saecker, R. M., Tsodikov, O. V., McQuade, K. L., Schlax, P. E., Capp, M. W., and Record, M. T. (2002) *J. Mol. Biol.* **319**, 649–671
23. Tsujikawa, L., Strainic, M. G., Watrob, H., Barkley, M. D., and deHaseth, P. L. (2002) *Biochemistry* **41**, 15334–15341
24. Straney, D. C., Straney, S. B., and Crothers, D. M. (1989) *J. Mol. Biol.* **206**, 41–57
25. Roy, S., Garges, S., and Adhya, S. (1998) *J. Biol. Chem.* **273**, 14059–14062