

Assessment of lockdown effect in some states and overall India: A predictive mathematical study on COVID-19 outbreak

Tridip Sardar^{a,*}, Sk Shahid Nadim^b, Sourav Rana^c, Joydev Chattopadhyay^b

^a Department of Mathematics, Dinabandhu Andrews College, Kolkata, India

^b Agricultural and Ecological Research Unit, Indian Statistical Institute, Kolkata, India

^c Department of Statistics, Visva-Bharati University, Santiniketan, West Bengal, India

ARTICLE INFO

Article history:

Received 9 June 2020

Revised 27 June 2020

Accepted 1 July 2020

Available online 8 July 2020

Keywords:

COVID-19

Mathematical model

Lockdown effect

Outbreak containment policy

ABSTRACT

In the absence of neither an effective treatment or vaccine and with an incomplete understanding of the epidemiological cycle, Govt. has implemented a nationwide lockdown to reduce COVID-19 transmission in India. To study the effect of social distancing measure, we considered a new mathematical model on COVID-19 that incorporates lockdown effect. By validating our model to the data on notified cases from five different states and overall India, we estimated several epidemiologically important parameters as well as the basic reproduction number (R_0). Combining the mechanistic mathematical model with different statistical forecast models, we projected notified cases in the six locations for the period May 17, 2020, till May 31, 2020. A global sensitivity analysis is carried out to determine the correlation of two epidemiologically measurable parameters on the lockdown effect and also on R_0 . Our result suggests that lockdown will be effective in those locations where a higher percentage of symptomatic infection exists in the population. Furthermore, a large scale COVID-19 mass testing is required to reduce community infection. Ensemble model forecast suggested a high rise in the COVID-19 notified cases in most of the locations in the coming days. Furthermore, the trend of the effective reproduction number (R_t) during the projection period indicates if the lockdown measures are completely removed after May 17, 2020, a high spike in notified cases may be seen in those locations. Finally, combining our results, we provided an effective lockdown policy to reduce future COVID-19 transmission in India.

© 2020 Elsevier Ltd. All rights reserved.

1. Introduction

As of May 15, 2020, 4,593,395 cases and 306,376 deaths from 2019 novel coronavirus disease (COVID-19), caused by severe acute respiratory syndrome corona virus 2 (SARS-CoV-2), were recorded worldwide [1]. Coronaviruses are enveloped non-segmented positive-sense RNA viruses that belong to the Coronaviridae family and the order Nidovirales, and are widely distributed among humans and other mammals [2]. The novel coronavirus, COVID-19 started in mainland China, with a geographical emphasis at Wuhan, the capital city of Hubei province [3] and has widely spread all over the world. Many of the initial cases were usually introduced to the wholesale Huanan seafood market, which also traded live animals. Clinical trials of hospitalized patients found that patients exhibit symptoms consistent with viral pneumonia at the onset of COVID-19, most commonly fever, cough, sore throat and fatigue [4]. Some patients reported changes

in their ground-glass lungs; normal or lower than average white lymphocyte blood cell counts and platelet counts; hypoxemia; and deranged liver and kidney function. Most were said to be geographically related to the wholesale market of Huanan seafood [5]. Severe outbreaks occur in USA (1457593 cases), Spain (272646 cases), Russia (262843 cases), UK (236711 cases), Italy (223885) and so many countries and the disease continues to spread globally. This has been declared a pandemic by the World Health Organization. It is the third zoonotic human coronavirus that has arisen in the present century, after the 2002 severe acute respiratory syndrome coronavirus (SARS-CoV), which spread to 37 countries and the 2012 Middle East respiratory syndrome coronavirus (MERS-CoV), which spread to 27 countries.

The 2019 pandemic novel coronavirus was first confirmed in India on January 30, 2020, in the state of Kerala. A total of 82087 confirmed cases and 2648 deaths in the country have been reported as of May 15, 2020 [6]. The Indian government has introduced social distance as a precaution to avoid the possibility of a large-scale population movement that can accelerate the spread of the disease. India government implemented a 14-hour voluntary

* Corresponding author.

E-mail address: tridipiitk@gmail.com (T. Sardar).

public curfew on 22 March 2020. Furthermore, the Prime Minister of India also ordered a nationwide lockdown at midnight on March 24, 2020 to slow the spread of COVID-19. Despite no vaccine, social distancing has identified as the most commonly used prevention and control strategy [7]. The purpose of these initiatives is the restriction of social interaction in workplaces, schools, and other public spheres, except for essential public services such as fire, police, hospitals. No doubt the spread of this virus outbreak has seriously disrupted the life, economy and health of citizens. This is a great concern for everyone how long this scenario will last and when the disease will be controlled.

Mathematical modeling based on system of differential equations may provide a comprehensive mechanism for the dynamics of a disease transmission [8]. Several modeling studies have already been performed for the COVID-19 outbreak [9–13]. Based on data collected from December 31, 2019 till January 28, 2020, Wu et al. [13] developed a susceptible exposed infectious recovered model (SEIR) to clarify the transmission dynamics and projected national and global spread of disease. They also calculated around 2.68 is the basic reproductive number for COVID-19. Tang et al. [12] proposed a compartmental deterministic model that would combine the clinical development of the disease, the epidemiological status of the patient and the measures for intervention. Researchers found that the amount of control reproduction number may be as high as 6.47, and that methods of intervention including intensive touch tracing followed by quarantine and isolation would effectively minimize COVID cases [12]. For the basic reproductive number, Read et al. reported a value of 3.1 based on the data fitting of an SEIR model, using an assumption of Poisson-distributed daily time increments [14]. A report by Cambridge University has indicated that India's countrywide three-week lockdown would not be adequate to prevent a resurgence of the new coronavirus epidemic that could bounce back in months and cause thousands of infections [15]. They suggested that two or three lockdowns can extend the slowdown longer with five-day breaks in between or a single 49-day lockdown. Data-driven mathematical modeling plays a key role in disease prevention, planning for future outbreaks and determining the effectiveness of control. Several data-driven modeling experiments have been performed in various regions [12,16]. Currently, there are very limited works that studied the impact of lockdown on COVID-19 transmission dynamics in India.

In the present manuscript, we proposed a new mathematical model for COVID-19 that incorporates the lockdown effect. We also considered variability in transmission between symptomatic and asymptomatic populations with former being a fast spreader of the disease. Analyzing COVID-19 daily notified cases from five affected states (Maharashtra, Delhi, Tamil Nadu, Gujarat and Punjab) and from overall India, we studied the effect of social distancing measures implemented by the Govt. on notified cases reduction in those regions. We also estimates the basic reproduction numbers (R_0) for these six locations. Using a post-processing BMA technique, we ensemble our COVID-19 mathematical model with different statistical forecast model to obtain a projection of notified cases in those six locations for the period May 17, 2020 till May 31, 2020. A global sensitivity analysis is carried out to determine the correlation of two epidemiologically measurable parameters on lockdown effect and also on R_0 . Finally to determine the COVID-19 transmission trend during the projection period (May 17, 2020 till May 31, 2020), we estimate the effective reproduction number (R_t) for the mentioned six locations.

2. Method

Based on the development and epidemiological characteristics of COVID-19, a SEIR type model is more appropriate to study the dynamics of this current pandemic [8,17,18]. The model we de-

veloped in this paper is based on the interaction of seven mutually exclusive sub-classes namely, Susceptible (S), Lockdown (L), Exposed (E), Asymptomatic (A), Symptomatic (I), Hospitalized (C), and Recovered (R).

Susceptible population (S) increased due to constant recruitment rate Π_H and those individuals coming back from lockdown compartment after the lockdown period $\frac{1}{\omega}$. Population in the susceptible class decreased due to new infection in contact with symptomatic and asymptomatic infected population, natural death and also a fraction of the susceptible individuals become home-quarantine due to lockdown at a rate l . We also assumed variability in disease transmission in asymptomatic and symptomatic population with later being a fast spreader of infection with a variability factor ($0 \leq \rho \leq 1$) [19,20].

Lockdown population (L) increased by those susceptible who are home-quarantined during the lockdown period $\frac{1}{\omega}$, at a rate l . Population under lockdown is decreased due to natural death and those individuals who become susceptible again after the lockdown period $\frac{1}{\omega}$. For simplicity, we assume ideal lockdown scenario *i.e.* all population under lockdown maintained proper social distancing and do not contribute to new infection.

Population in the exposed compartment (E) increased by new infection coming from susceptible compartment. A fraction κ of the exposed individuals become symptomatic infected and remaining fraction $(1 - \kappa)$ become asymptomatic infected after the disease incubation period $\frac{1}{\sigma}$. Exposed population also decreased due to natural death at a rate μ .

Asymptomatic infected compartment (A) increased due to a fraction $(1 - \kappa)$ of infection coming from exposed compartment. Since, asymptomatic COVID-19 cases are hard to detect therefore, we assume that asymptomatic infection are not notified. Population in this compartment is decreased due to natural recovery and deaths at a rate γ_1 and μ , respectively.

Population in the symptomatic infected compartment (I) increased due to a fraction κ of infection coming from exposed compartment after the incubation period $\frac{1}{\sigma}$. This compartment decreased due to natural recovery at a rate γ_2 , natural death at a rate μ and those infected population who are notified & hospitalized at a rate τ .

Notified & hospitalized infected population (C) increased due to influx of infection coming from symptomatic infected class at a rate τ . This population decreased due to natural death at a rate μ , disease related deaths at a rate δ , and recovery from COVID-19 at a rate γ_3 . We assume that population of this compartment do not mix with the general population in the community *i.e.* this compartment do not contribute in the COVID-19 transmission.

Finally, recovered population (R) increased due to influx of individuals coming from asymptomatic (A), symptomatic (I), and notified & hospitalized individuals (C) at a rate γ_1 , γ_2 , and γ_3 , respectively. As we are analyzing this study in a shorter time frame therefore, we assume definitive immunity *i.e.* recovered population do not contribute to new COVID-19 infection. Thus recovered population decreased due to natural death at a rate μ .

Based on the above assumptions the system of equations that represent COVID-19 transmission with and without lockdown are provided below:

Model without lock-down

$$\begin{aligned} \frac{dS}{dt} &= \Pi_H - \frac{\beta_1 IS}{(N-C)} - \frac{\rho \beta_1 AS}{(N-C)} - \mu S \\ \frac{dE}{dt} &= \frac{\beta_1 IS}{(N-C)} + \frac{\rho \beta_1 AS}{(N-C)} - (\mu + \sigma)E, \end{aligned}$$

$$\begin{aligned}
 \frac{dA}{dt} &= (1 - \kappa)\sigma E - (\gamma_1 + \mu)A, \\
 \frac{dI}{dt} &= \kappa\sigma E - (\gamma_2 + \tau + \mu)I, \\
 \frac{dC}{dt} &= \tau I - (\delta + \gamma_3 + \mu)C, \\
 \frac{dR}{dt} &= \gamma_1 A + \gamma_2 I + \gamma_3 C - \mu R,
 \end{aligned}
 \tag{2.1}$$

Model with lock-down

$$\begin{aligned}
 \frac{dS}{dt} &= \Pi_H + \omega L - \frac{\beta_1 IS}{(N-L-C)} - \frac{\rho\beta_1 AS}{(N-L-C)} - \mu S - IS \\
 \frac{dL}{dt} &= IS - (\mu + \omega)L, \\
 \frac{dE}{dt} &= \frac{\beta_1 IS}{(N-L-C)} + \frac{\rho\beta_1 AS}{(N-L-C)} - (\mu + \sigma)E, \\
 \frac{dA}{dt} &= (1 - \kappa)\sigma E - (\gamma_1 + \mu)A, \\
 \frac{dI}{dt} &= \kappa\sigma E - (\gamma_2 + \tau + \mu)I, \\
 \frac{dC}{dt} &= \tau I - (\delta + \gamma_3 + \mu)C, \\
 \frac{dR}{dt} &= \gamma_1 A + \gamma_2 I + \gamma_3 C - \mu R.
 \end{aligned}
 \tag{2.2}$$

A diagram of our model is provided in Fig 1. Information of our model parameters is provided in Table 1.

Mathematical properties of the model

We studied the positivity and boundedness of solution of the model (2.1) (see supplementary appendix). The system (2.1) demonstrates two equilibria, that is, the disease-free equilibrium and an unique endemic equilibrium (see supplementary appendix). The disease-free state is locally asymptotically stable whenever the corresponding basic reproduction number (R_0) is less than unity (see supplementary appendix). By using a nonlinear Lyapunov function, it is also seen that the disease-free equilibrium is globally asymptotically stable whenever $R_0 < 1$ (see supplementary appendix). In addition, the model (2.1) has an unique endemic equilibrium if R_0 exceeds unity. Furthermore, using the central manifold theory, the local stability of the endemic equilibrium is established whenever $R_0 > 1$ (see supplementary appendix).

Data

Daily COVID-19 reported cases from Maharashtra (MH), Delhi (DL), Tamil Nadu (TN), Gujarat (GJ), Punjab (PJ) and whole India (IND) for the time period March 14, 2020 till May 3, 2020 are considered for our study. These five states are deeply affected by current COVID-19 outbreak in India [6]. Daily COVID-19 notified cases were collected from [6]. Demographic data of the different locations are taken from [21,22].

Estimation procedure

Several important epidemiological parameters (see Table 1) of our mathematical model (2.2) are estimated using COVID-19 daily reported cases from the mentioned six locations. Total time duration of lockdown implemented by Govt. is 54 days starting from March 25, 2020 till May 17, 2020. Time-series data of daily COVID-19 cases in our study for the locations MH, DL, TN, GJ, PJ, and

IND, respectively contains both with and without lockdown effect. Therefore, a combination of our mathematical models (2.1) & (2.2) (with and without lockdown) are used for calibration. From our models (2.1) & (2.2), new COVID-19 notified cases during the i^{th} time interval $[t_i, t_i + \Delta t_i]$ is

$$H_i(\hat{\theta}) = \tau \int_{t_i}^{t_i + \Delta t_i} I(\xi, \hat{\theta}) d\xi,
 \tag{2.3}$$

where, Δt_i is the time step length and $\hat{\theta}$ is the set of unknown parameters of the models (2.1) & (2.2) that are estimated. Then K observation from the data and from the models (2.1) & (2.2) are $\{D_1, D_2, \dots, D_K\}$ and $\{H_1(\hat{\theta}), H_2(\hat{\theta}), \dots, H_K(\hat{\theta})\}$, respectively. Therefore, we constructed the sum of squares function [23] as:

$$SS(\hat{\theta}) = \sum_{i=1}^K [D_i - H_i(\hat{\theta})]^2,
 \tag{2.4}$$

MATLAB based nonlinear least square solver *fmincon* is used to fit simulated and observed daily COVID-19 notified cases for the mentioned states and the whole country. Delayed Rejection Adaptive Metropolis [24] (DRAM) algorithm is used to sample the 95% confidence region. An elaboration of this model fitting technique is provided in [25].

Statistical forecast models and the ensemble model

COVID-19 mathematical model we developed in this study may be efficient in capturing the transmission dynamics. However, as solution of the mathematical model is always smooth therefore, our model may not be able to replicate the fluctuations occurring in daily time-series data. Moreover, forecast of future COVID-19 cases based on a single mathematical model may not be very reliable approach. For this purpose, we used two statistical forecast models namely, Auto-regressive Integrated Moving Average (ARIMA); and ARMA errors, Trend and Seasonal components (TBATS) respectively. A Hybrid statistical model (HYBRID) based on the combination of ARIMA and TBATS is also used during forecast. Calibration of three statistical forecast models (ARIMA, TBATS and HYBRID) using COVID-19 daily notified cases from MH, DL, TN, GJ, PJ, and IND, respectively during March 14, 2020 till May 3, 2020, are done using the R package 'forecastHybrid' [26]. Each individuals models (ARIMA and TBATS) are first fitted to the aforesaid time-series data and then we combined each models with weightage based on in sample error to obtain the HYBRID model [26]. Prediction skill of the each three statistical forecast model (ARIMA, TBATS and HYBRID) are tested on the daily COVID-19 notified cases during May 4, 2020 till May 8, 2020 for each of the six locations (see supplementary Table S2). Based on the prediction skill (see supplementary Table S2), the best statistical forecast model is ensemble with our COVID-19 mathematical models (2.1) and (2.2). A post-processing BMA technique based on 'DRAM' algorithm [24] is used to determine the weightage (see supplementary Table S3 and Fig S6 to Fig S11) to combine the best statistical model with the COVID-19 mathematical models (2.1) and (2.2).

Disease forecasting under different lockdown scenario

Govt. have implemented lockdown all over India on March 25, 2020 and it will continue till May 17, 2020. The short and medium scale industries are largely affected by the lockdown [27,28]. To partially recover the economy, Govt. of India continuously relaxing the lockdown rules from April 20, 2020 [29-31]. To forecast COVID-19 cases for the period May 17, 2020 till May 31, 2020, for the six locations (MH, DL, TN, GJ, PJ and IND) based on the Govt. strategy, we considered following scenarios:

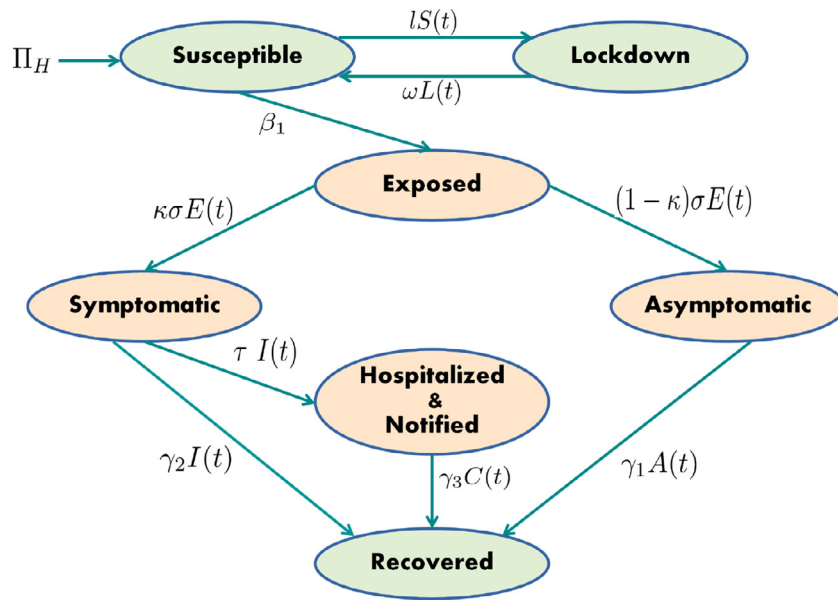


Fig. 1. Flow diagram of the mathematical model with lockdown. Epidemiological information of different parameters shown in the above figure are provided in Table 1.

Forecast based on current lockdown rate: We have estimated the average lockdown rate for our COVID-19 mathematical model (see Table 1 and Table 2). Using this lockdown rate and using other parameters (estimated and known) of our mathematical models (2.1) & (2.2), we forecast COVID-19 notified cases during May 17, 2020 till May 31, 2020 for the locations MH, DL, TN, GJ, PJ, and IND, respectively. Finally, forecast based on our mathematical model is ensemble with the result based on the best statistical forecast model for a location mentioned earlier.

Forecast based on 15% reduction in current lockdown rate: We followed same procedure as the previous scenario with 15% decrement in the estimate of lockdown rate (see Table 1 and Table 2) to obtained the forecast during the mentioned time period.

Forecast based on 20% reduction in current lockdown rate: we followed the same procedure as previous two scenarios with 20% decrement in the estimate of lockdown rate (see Table 1 and Table 2) to obtained the forecast during the mentioned time period.

Forecast based on 30% reduction in current lockdown rate: we followed the same procedure as previous three scenarios with 30% decrement in the estimate of lockdown rate (see Table 1 and Table 2) to obtain the forecast during the mentioned time period.

Forecast based on no lockdown: Continue as earlier and assuming lockdown is lifted after May 17, 2020, we forecast COVID-19 notified cases during May 17, 2020 till May 31, 2020, for the six mentioned locations.

Estimation of the basic and the effective reproduction number

Since we assumed that population under the lockdown do not contact with the infection from the community therefore the basic reproduction number (R_0) [32] for our mathematical model with and without lockdown (see Fig 1 and supplementary method) are same and its expression is provided below:

$$R_0 = \frac{\beta_1 \kappa \sigma}{(\mu + \sigma)(\gamma_2 + \tau + \mu)} + \frac{\rho \beta_1 (1 - \kappa) \sigma}{(\mu + \sigma)(\gamma_1 + \mu)}.$$

The effective reproductive number (R_t) is defined as the expected number of secondary infection per infectious in a population made up of both susceptible and non-susceptible hosts [33]. If $R_t > 1$, the number of new cases will increase, for $R_t = 1$, the

disease become endemic, and when $R_t < 1$ there will be a decline in new cases.

Following [33], the expression of R_t is given as follows:

$$R_t = R_0 \times \hat{s},$$

where, \hat{s} is the fraction of the host population that is susceptible.

R_0 can easily be estimated by plugin the sample values of the unknown parameters (see Table 2) of the model without lockdown (2.1) in the expressions of R_0 .

Following procedure is adapted to estimate R_t during May 17, 2020 till May 31, 2020 under two lockdown scenarios:

- Using current estimate of the lockdown rate and different parameters of our mathematical model (see Table 1 and Table 2), we estimate \hat{s} and R_t during May 17, 2020 till May 31, 2020, for the locations MH, DL, TN, GJ, PJ and IND, respectively.
- Using different parameters (see Table 1 and Table 2) of our mathematical model without lockdown (2.1), we estimated \hat{s} and R_t during May 17, 2020 till May 31, 2020 for the mentioned six locations.

Sensitivity analysis and effective lockdown strategy

To determine an effective lockdown policy in those six locations (MH, DL, TN, GJ, PJ and IND) will require some correlation between lockdown effect with some epidemiologically measurable parameters of our mathematical model (see Fig 1). There are several important parameters of our mathematical model (see Table 1) and among them there are two parameters that are measurable namely, κ : fraction of new infected that become symptomatic (COVID-19 testing will provide an accurate estimate) and τ : Average notification & hospitalization rate of symptomatic COVID-19 infection (this parameter is proportional to the number of COVID-19 testing). Lockdown effect is measured as the difference between the total number of cases projected by our ensemble model with and without lockdown. A global sensitivity analysis [34] is performed to determine the effect of the mentioned two parameters on the lockdown effect and on the basic reproduction number (R_0). Using Latin Hyper cube sampling (LHS), we draw 1000 samples for κ and τ , respectively from their respective ranges (see Table 1). Partial rank correlation and its corresponding p -value are exam-

Table 1
Parameters with their respective epidemiological explanation for the mechanistic mathematical model (see Fig 1) for COVID-19.

Parameters	Epidemiological Meaning	Ranges	Reference
N	Total population	Varies over different region	[21]
$\Pi_H = \mu \times N$	Average recruitment rate	Varies over different region	-
$\frac{1}{\mu}$	Average life expectancy at birth	Varies over states	[22]
β_1	Transmission rate of symptomatic infected	(0 - 200) day^{-1}	Estimated
ρ	Reduction in COVID-19 transmission for Asymptomatic infected	0 - 1	Estimated
$\frac{1}{\sigma}$	COVID-19 incubation period	(2 - 14) days	Estimated
κ	Fraction of exposed population that become symptomatic infected	0 - 1	Estimated
γ_1	Recovery rate for asymptomatic infected	$(\gamma_3 - 1) day^{-1}$	Estimated
γ_2	Recovery rate for symptomatic infected	$(\gamma_3 - 1) day^{-1}$	Estimated
τ	Average notification & hospitalization rate of symptomatic infection	(0 - 1) day^{-1}	Estimated
δ	Average case fatality rate	Varies over states	[6]
γ_3	Average recovery rate for COVID-19 hospitalized & notified infection	Varies over states	[6]
l	Average lockdown rate	(0 - 1) day^{-1}	Estimated
$\frac{1}{\omega}$	lockdown period	54 days	[38]

ined to determine the relation between two mentioned parameters with the lockdown effect and R_0 , respectively.

3. Results and discussion

Three models (mathematical, statistical forecast and ensemble) fitting to daily COVID-19 notified cases during March 14, 2020 till May 3, 2020, for Maharashtra (MH), Delhi (DL), Tamil Nadu (TN), Gujarat (GJ), Punjab (PJ), and India (IND) is depicted in Fig 2. Among the three statistical forecast models (ARIMA, TBATS and HYBRID), the ARIMA model performed better on the test prediction data (May 4, 2020 till May 8, 2020) of DL and GJ (see supplementary Table S2). Whereas, the TBATS model provide better result in compare to other two models for the test prediction data (May 4, 2020 till May 8, 2020) of PJ (see supplementary Table S2). For the remaining three locations (MH, TN and IND), the HYBRID model provide the best result (see supplementary Table S2) on the test prediction data (May 4, 2020 till May 8, 2020). The ensemble model, which is a combination of our COVID-19 mathematical models (2.1) & (2.2) and the best statistical forecast model (region specific), is performed well in capturing COVID-19 daily time-series data trend in all the six locations. Posterior distribution of the weights at which we combine our COVID-19 mathematical model with the best statistical forecast model in the six different locations are provided in supplementary method (see Fig S6 to Fig S11 and Table S3).

In MH, DL, and GJ, the estimate of the symptomatic influx fraction (κ) suggest that low percentage (about 11% to 20%) of symptomatic infected in the population (see Table 2). However, in TN and PJ, relatively higher percentage (about 82% to 88%) of symptomatic infection is found (see Table 2). In overall India, our estimate shows that currently about 62% of new infection are symptomatic (see Table 2). Except for GJ, in other five locations, estimate of the transmission rate (β_1) are found to be in same scale (see Table 2). Relatively higher value of β_1 is found in Gujrat (see Table 2). Low value of the transmission variability factor (ρ) indicates most of the community infection in GJ are due to contact with the symptomatic infected population. As in GJ, the value of κ is found to be small (about 11%) therefore, relatively smaller symptomatic population producing most of the infection in GJ. This indicate that there may be a possibility of existence of super-spreaders among the symptomatic infected in GJ. This observation is agree with a recent survey result in GJ [35]. Except for PJ, in other five locations, the estimates of ρ (below 50%) are found to be low (see Table 2). This indicates small contribution of the asymptomatic infected population towards the new infection produced in MH, DL, TN, GJ and IND, respectively. Estimate of the lockdown rate in the five states (MH, DL, TN, GJ and PJ) suggest that around 50% to 88%

of the total susceptible population are successfully home quarantined during the lockdown period (see Table 2). Thus, lockdown is overall successful in those five states. However, this is not the case for overall India, our estimate suggest that about 11% of the total susceptible population in India maintained proper social distancing during the lockdown period (see Table 2).

Our estimate of the basic reproduction number (R_0) (see Table 3), in the six locations found to be in good agreement of the world-wide estimate provided by WHO [36]. We performed a global sensitivity analysis of two epidemiologically measurable parameters of our mathematical model (see Fig 1) namely κ : fraction of new infected that become symptomatic and τ : Average notification & hospitalization rate of symptomatic COVID-19 infection, on R_0 . Partial rank correlation and its corresponding p -value (see Fig 3) suggest that τ has a negative correlation on R_0 . Thus, more testing will isolate more infection from the community and therefore may reduce the COVID-19 community transmission. Furthermore, high positive correlation of κ with R_0 (see Fig 3) indicates the possibility of high COVID-19 transmission in those areas where population have higher percentage of symptomatic infection.

Ensemble model forecast of notified COVID-19 cases between May 17, 2020 till May 31, 2020 (see Table 4, Fig. 4, and Fig S10 to Fig S10 in supplementary appendix) indicate that in the coming few days, a high increment in the COVID-19 notified cases may be observed in MH, DL, TN, GJ, PJ, and IND. Furthermore, our ensemble model prediction during the mentioned period suggest that around 117,645 to 128,379 cases may occurred in overall India (see Table 4). These numbers are much higher than the total cumulative cases between March 2, 2020 till May 15, 2020, in whole India.

A global sensitivity analysis of κ and τ on the lockdown effect suggest that both of these parameters have high positive correlation with the lockdown effect in all the six locations (see Fig. 5). Therefore, lockdown will be effective in those region where higher percentage of symptomatic infection is found in the population and also larger COVID-19 mass testing will be required to isolate the cases.

To measure the COVID-19 transmission trend during May 17, 2020 till May 31, 2020, we estimated the effective reproduction number (R_t) during the mentioned period for MH, DL, TN, GJ, PJ and IND, respectively (see Fig. 6). Our result suggest that, a decreasing trend in new notified COVID-19 cases ($R_t < 1$) may be seen after May 31, 2020 if current lockdown measures (see Table 2) are maintained in DL, TN and PJ, respectively. Furthermore, if social distancing measures are removed after May 17, 2020, we may see a rise in the daily COVID-19 cases in all of the six locations (see Fig. 6).

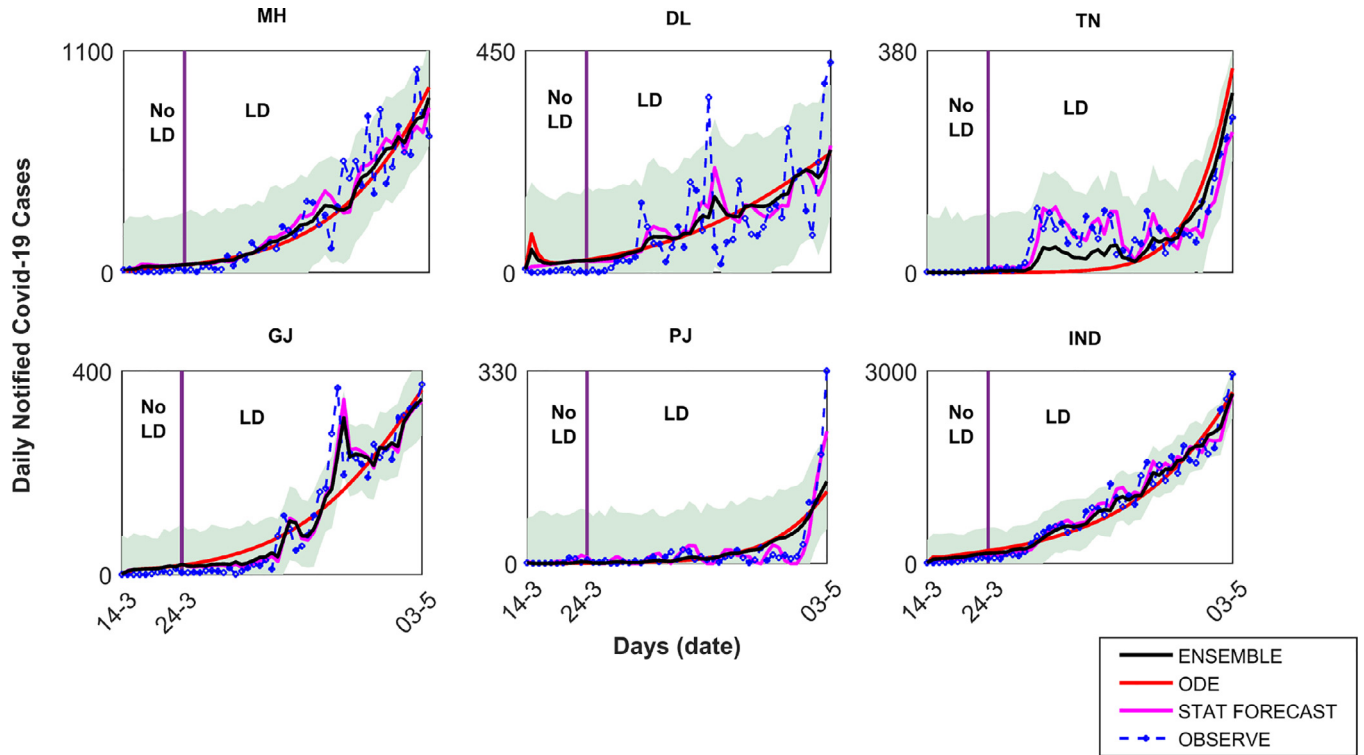


Fig. 2. Three models (mechanistic mathematical model, statistical forecast model and ensemble model) fitting to daily notified COVID-19 cases from five different states and overall India for the period March 14, 2020 till May 3, 2020. Respective subscript are MH: Maharashtra, DL: Delhi, TN: Tamil Nadu, GJ: Gujarat, PJ: Punjab, and IND: India. Here **LD** denotes lockdown period and **No LD** indicate the period before lockdown implementation. Statistical forecast model for different locations are ARIMA (DL and GJ), TBATS (PJ) and HYBRID (MH, TN and IND), respectively. Lockdown effect is only considered for the mechanistic mathematical model and consequently in the ensemble model. Shaded area indicate the 95% confidence region.

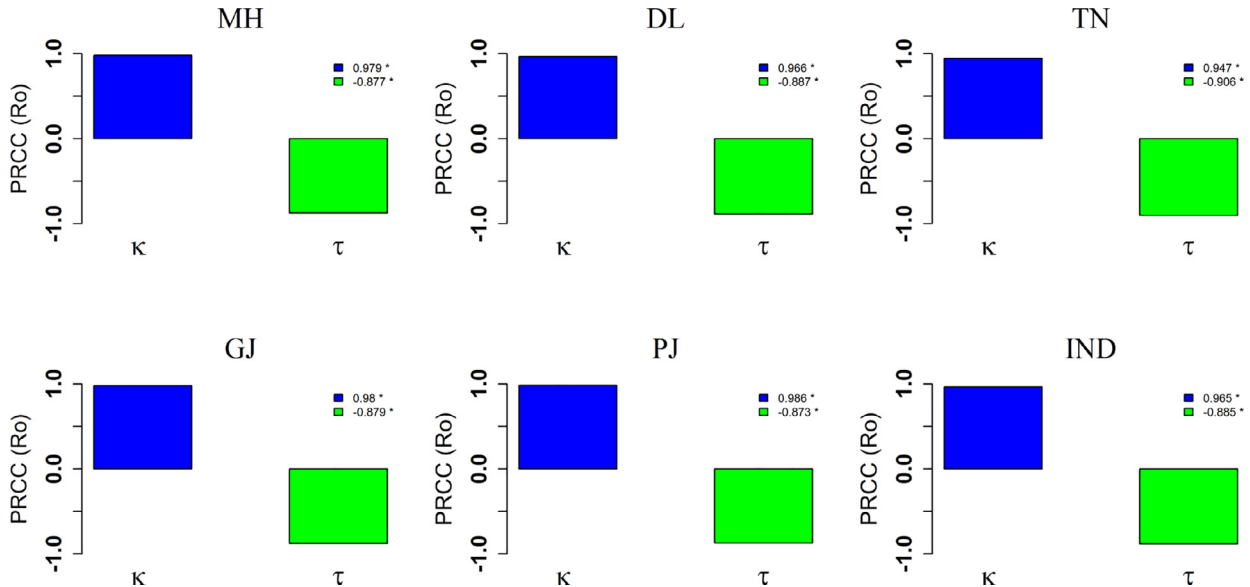


Fig. 3. Global sensitivity analysis of two epidemiologically measurable parameters namely κ : fraction of new infected that become symptomatic and τ : average notification & hospitalization rate of symptomatic COVID-19 infection, on R_0 . The subscripts MH, DL, TN, GJ, PJ and IND, respectively are same as Fig 2.

Table 2

Estimated parameter values of the mechanistic mathematical model (see Fig 1). Respective row subscripts are same as Fig. 2. All data are given in the format **Estimate (95% CI)**.

Location	β_1	ρ	σ	κ	γ_1	γ_2	$\tau \times 100$	$l \times 100$
MH	5.58(2.62–9.79)	0.015(0.01–0.15)	0.39(0.07–0.45)	0.20(0.11–0.53)	0.63(0.27–0.99)	0.69(0.22–0.98)	24.36(11.34–93.53)	57.84(11.77–86.19)
DL	5.93(0.78–6.30)	0.13(0.02–0.82)	0.11(0.07–0.47)	0.16(0.11–0.93)	0.99(0.31–0.99)	0.47(0.33–0.98)	37.86(12.48–98.27)	87.03(11.25–87.11)
TN	1.47(1.23–3.63)	0.37(0.18–0.91)	0.30(0.15–0.48)	0.88(0.03–0.91)	0.84(0.29–0.98)	0.60(0.30–0.98)	0.56(0.22–9.65)	52.16(12.38–88.92)
GJ	10.73(5.96–20.53)	0.03(0.002–0.15)	0.10(0.07–0.20)	0.11(0.10–0.15)	0.24(0.21–0.98)	0.91(0.66–0.99)	16.79(10.10–23.56)	77.68(37.15–89.36)
PJ	1.63(1.31–5.35)	0.68(0.016–0.95)	0.26(0.076–0.45)	0.82(0.11–0.90)	0.43(0.12–0.97)	0.98(0.24–0.99)	2.11(0.12–2.24)	48.18(12.50–87.76)
IND	2.60(1.04–2.92)	0.02(0.02–0.77)	0.08(0.07–0.14)	0.62(0.30–0.98)	0.73(0.31–0.98)	0.79(0.33–0.98)	0.6(0.2–0.9)	10.41(10.37–42.56)

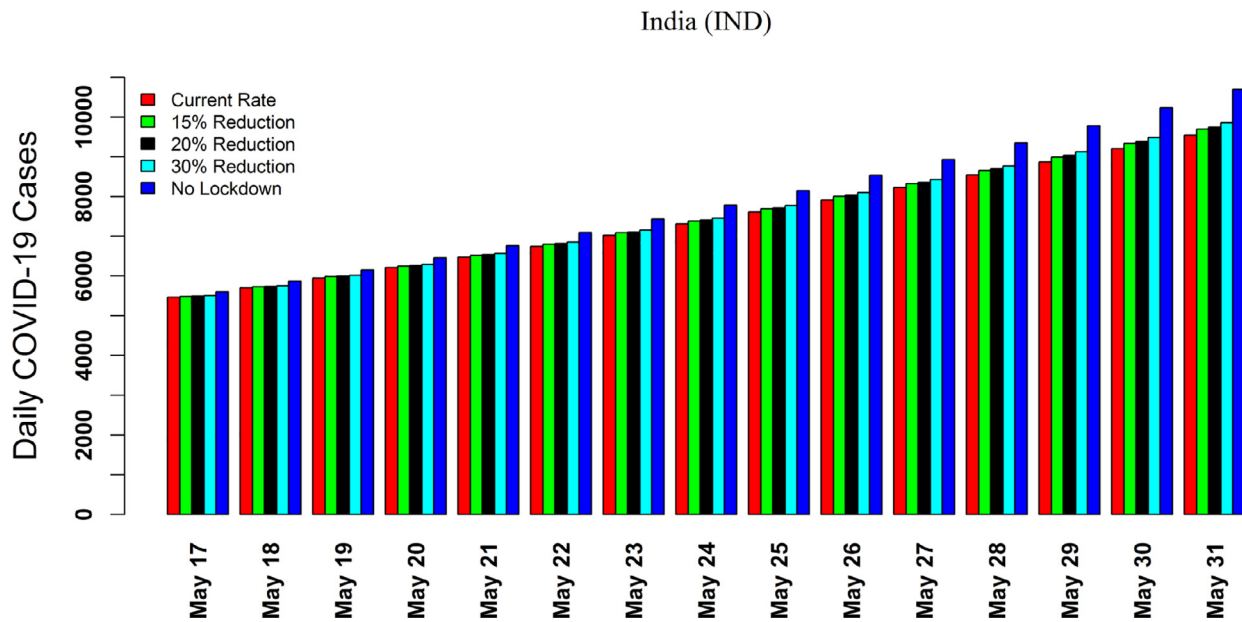


Fig. 4. Ensemble model forecast for the daily notified COVID-19 cases in India during May 17, 2020 till May 31, 2020, under five different social distancing measure. Various legends are **Current Rate**: daily notified case projection using the estimated value of the lockdown rate (see Table 2), **15% Reduction**: daily notified case projection using 15% reduction in the estimated value of the lockdown rate (see Table 2), **20% Reduction**: daily notified case projection using 20% reduction in the estimated value of the lockdown rate (see Table 2), **30% Reduction**: daily notified case projection using 30% reduction in the estimated value of the lockdown rate (see Table 2), and **No lockdown**: daily notified case projection based on no lockdown scenario, respectively.

Table 3
Estimated values of the basic reproduction number (R_0) in MH, DL, TN, GJ, PJ and IND. Respective row subscripts are same as Fig 2. All data are given in the format **Estimate (95% CI)**.

Location	Basic Reproduction Number (R_0)
MH	1.3320 (1.2369–2.3053)
DL	1.7569 (1.2409–2.2392)
TN	2.2169 (1.78–5.0374)
GJ	2.3911 (1.6223–2.7436)
PJ	1.8077 (1.7342–6.3960)
IND	2.0337 (1.6645–2.3318)

4. Conclusion

Up to May 15, 2020, total number of reported COVID-19 cases and deaths in India are **81794** and **2649**, respectively [6]. This tally rises with few thousand new notified cases every day reported

from different locations in India [6]. Currently, there is no treatment or vaccine available for COVID-19. Therefore, only measure to control the outbreak may be home quarantined (lockdown) a larger percentage of susceptible population. However, this disease control strategy may have some negative impact on the economy. Therefore, it is utmost important to determine an effective lockdown policy that may reduce COVID-19 transmission in the community as well as save the Indian economy from drowning. This policy may be found by studying the dynamics and prediction of a mechanistic mathematical model for COVID-19 transmission and testing the results in real life situation.

In this present study, we consider a new mathematical model on COVID-19 transmission that incorporates the lockdown effect (see Fig 1). In our models (2.1) & (2.2), we also considered transmission variability between symptomatic and asymptomatic population with former being a fast spreader of the disease. Using daily time-series data of notified COVID-19 cases from five states (Maharashtra, Delhi, Tamil Nadu, Gujarat and Punjab) and overall India, we studied the effect of lockdown measures on the reduction of notified cases in those regions. Our result suggest that lockdown will be effective in those locations where higher percent-

Table 4
Ensemble model forecast of the total COVID-19 cases during May 17, 2020 till May 31, 2020 in five different states and overall India under five different lockdown scenario. Respective row subscripts are same as Fig. 2. Different lockdown scenarios are **Current Rate**: cumulative case projection using the estimated value of the lockdown rate (see Table 2), **15% Reduction**: cumulative case projection using 15% reduction in the estimated value of the lockdown rate (see Table 2), **20% Reduction**: cumulative case projection using 20% reduction in the estimated value of the lockdown rate (see Table 2), **30% Reduction**: cumulative case projection using 30% reduction in the estimated value of the lockdown rate (see Table 2), and **No lockdown**: cumulative case projection based on no lockdown scenario, respectively. All data are provided in the format **Estimate (95% CI)**.

Location	Current Rate	15% Reduction	20% Reduction	30% Reduction	No lockdown
MH	33138(31910–34046)	34602(34430–34730)	35144(34983–35361)	36318(35532–37383)	48635(41285–58578)
DL	6247(5857–6811)	6504(6253–6866)	6601(6403–6887)	6816(6734–6933)	9623(7535–11068)
TN	19344(19319–21503)	20958(20946–21975)	21598(21591–22162)	23076(22562–23107)	60390(31726–62172)
GJ	8227(8128–9039)	8414(8273–9572)	8485(8328–9776)	8646(8452–10233)	11208(10433–17549)
PJ	7427(7128–7517)	8188(7702–8333)	8480(7924–8647)	9139(8421–9354)	19715(16406–20705)
IND	117645(110999–122572)	119204(111569–124863)	119740(111765–125650)	120831(112164–127255)	128379(114923–138352)

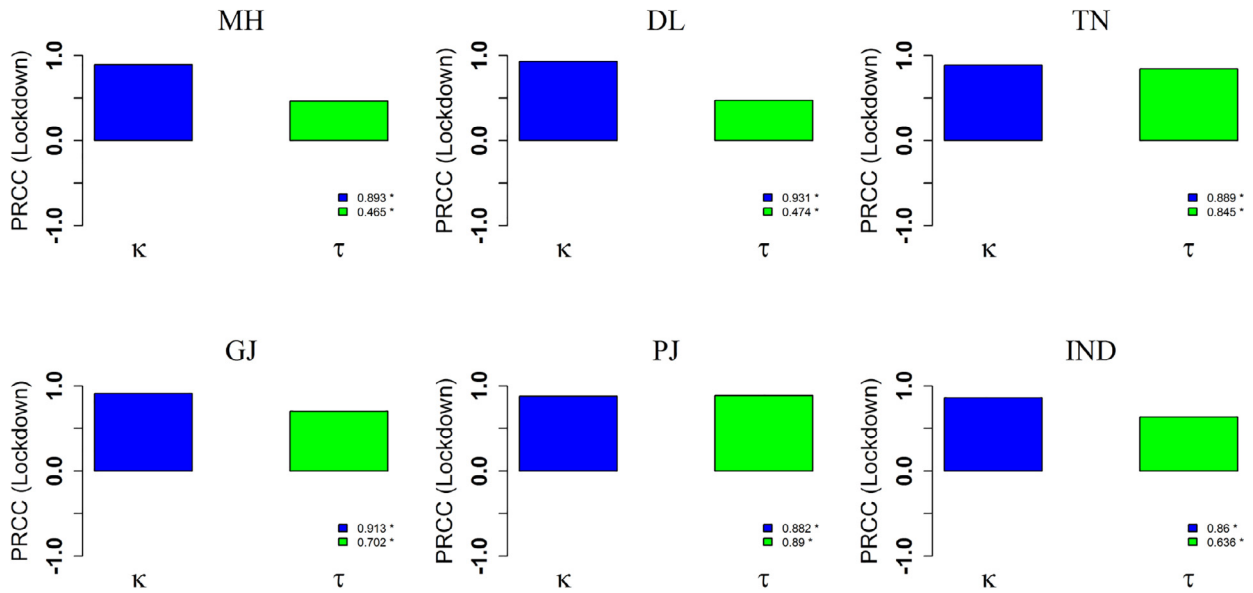


Fig. 5. Global sensitivity analysis of two epidemiologically measurable parameters namely κ : fraction of new infected that become symptomatic and τ : average notification & hospitalization rate of symptomatic COVID-19 infection, on the lockdown effect. The effect of lockdown is measured as the difference between the total number of cases projected by our ensemble model with and without lockdown scenario during May 17, 2020 till May 31, 2020. The subscripts MH, DL, TN, GJ, PJ and IND, respectively are same as Fig 2.

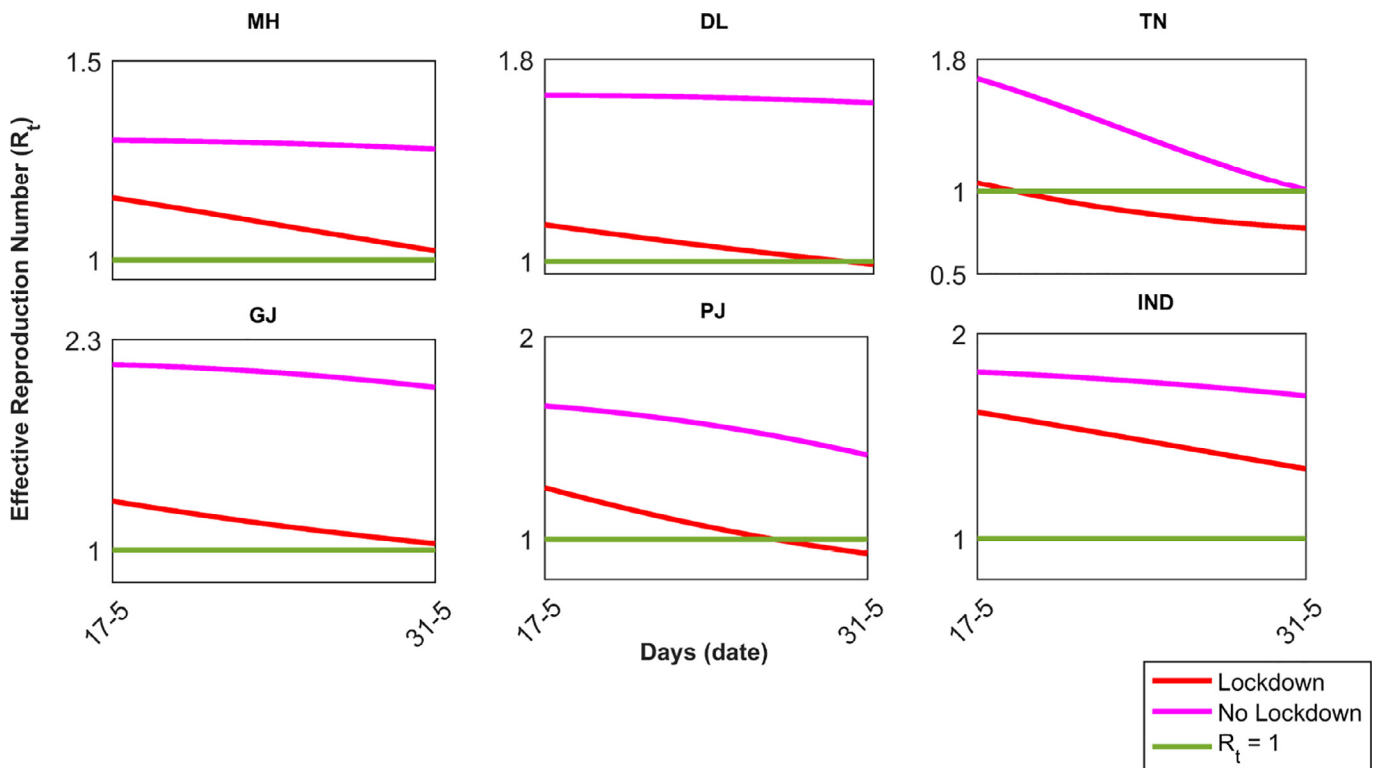


Fig. 6. Effective reproduction number (R_t) for the period May 17, 2020 till May 31, 2020, in MH, DL, TN, GJ, PJ and IND, respectively. The subscripts MH, DL, TN, GJ, PJ and IND, respectively are same as Fig 2.

age of symptomatic infection exist in the population. Furthermore, a large scale COVID-19 mass testing is required to reduce community infection in those locations. Using a post-processing BMA technique, we ensemble the prediction of our mathematical model with the results obtained from different statistical forecast model.

Our ensemble model forecast of COVID-19 daily notified cases during May 17, 2020 till May 31, 2020, suggested a very high rise in the COVID-19 notified cases in the mentioned time duration in most of the locations. Furthermore, estimation of the effective reproduction number (R_t) during the mentioned time duration in-

dicates if the lockdown measures are completely removed after May 17, 2020, in those locations, a high spike in COVID-19 notified cases may be seen during the mentioned forecasting period. We provide a suggestion for the Indian Govt. and policy makers to acquire the following steps for effective containment of COVID-19 transmission:

1. Perform a survey to find the percentage of symptomatic infection in different states and regions.
2. Focus implementing extensive lockdown in those locations only where the percentage of symptomatic infection is high.
3. Provide relaxation in lockdown in other locations for some time. This process will increase the percentage of symptomatic infection.
4. Repeat step-2, when a region has a sufficient percentage of symptomatic infection.

There are some drawback in our study and may be modified in future. We assume that lockdown population (L) and notified & hospitalized infection (C) do not mix with the general population in the community. However, there are numerous evidences where disease transmitted from the hospital and from home confined individuals [37]. We shall leave these challenges for our future objectives.

Declaration of Competing Interest

All the authors declare that they have no conflicts of interest.

CRedit authorship contribution statement

Tridip Sardar: Conceptualization, Data curation, Formal analysis, Investigation, Methodology, Software, Supervision, Validation, Writing - original draft, Writing - review & editing. **Sk Shahid Nadim:** Data curation, Formal analysis, Investigation, Methodology, Writing - original draft, Writing - review & editing. **Sourav Rana:** Formal analysis, Investigation, Software, Writing - original draft, Writing - review & editing. **Joydev Chattopadhyay:** Conceptualization, Supervision, Writing - original draft, Writing - review & editing.

Acknowledgments

The authors are grateful to editor-in-chief, handling editor and learned reviewers for their comments and suggestions on the earlier version of this manuscript. The comments immensely improve the standard of this article.

Dr. Tridip Sardar acknowledges the **Science & Engineering Research Board (SERB)** major project grant (File No: [EEQ/2019/000008 dt. 4/11/2019](#)), Government of India.

Sk Shahid Nadim receives funding as senior research fellowship from **Council of Scientific & Industrial Research** (Grant No: [09/093\(0172\)/2016/EMR-I](#)), Government of India, New Delhi.

The Funder had no role in study design, data collection and analysis, decision to publish, or preparation of the manuscript.

Supplementary material

Supplementary material associated with this article can be found, in the online version, at [10.1016/j.chaos.2020.110078](#)

References

- [1] Coronavirus COVID-19 global cases by the center for systems science and engineering. <https://gisanddata.maps.arcgis.com/apps/opsdashboard/index.html#/bda7594740fd40299423467b48e9ecf6> Retrieved : 2020-04-02; 2020.
- [2] Richman DD, Whitley RJ, Hayden FG. *Clinical virology*. John Wiley & Sons; 2016.

- [3] Wang C, Horby PW, Hayden FG, Gao GF. A novel coronavirus outbreak of global health concern. *The Lancet* 2020;395(10223):470–3.
- [4] Centers for disease control and prevention: 2019 novel coronavirus. <https://www.cdc.gov/coronavirus/2019-ncov> Retrieved : 2020-03-10; 2020.
- [5] Wuhan wet market closes amid pneumonia outbreak. <https://www.chinadaily.com.cn/a/202001/01/WS5e0c6a49a310cf3e35581e30.html> Retrieved : 2020-03-04; 2019.
- [6] India COVID-19 Tracker. <https://www.covid19india.org/> Retrieved : 2020-04-03; 2020.
- [7] Ferguson N., Laydon D., Nedjati Gilani G., Imai N., Ainslie K., Baguelin M., et al. Report 9: impact of non-pharmaceutical interventions (npis) to reduce covid19 mortality and healthcare demand2020;.
- [8] Sardar T, Ghosh I, Rodó X, Chattopadhyay J. A realistic two-strain model for mers-cov infection uncovers the high risk for epidemic propagation. *PLoS Negl Trop Dis* 2020;14(2):e0008065.
- [9] Tang B, Bragazzi NL, Li Q, Tang S, Xiao Y, Wu J. An updated estimation of the risk of transmission of the novel coronavirus (2019-ncov). *Infectious Disease Modelling* 2020;5:248–55.
- [10] Quilty BJ, Clifford S, et al. Effectiveness of airport screening at detecting travellers infected with novel coronavirus (2019-ncov). *Eurosurveillance* 2020;25(5).
- [11] Shen M, Peng Z, Xiao Y, Zhang L. Modelling the epidemic trend of the 2019 novel coronavirus outbreak in China. *bioRxiv* 2020.
- [12] Tang B, Wang X, Li Q, Bragazzi NL, Tang S, Xiao Y, et al. Estimation of the transmission risk of the 2019-nCoV and its implication for public health interventions. *J Clin Med* 2020;9(2):462.
- [13] Wu JT, Leung K, Leung GM. Nowcasting and forecasting the potential domestic and international spread of the 2019-ncov outbreak originating in wuhan, china: a modelling study. *The Lancet* 2020;395(10225):689–97.
- [14] Read JM, Bridgen JR, Cummings DA, Ho A, Jewell CP. Novel coronavirus 2019-ncov: early estimation of epidemiological parameters and epidemic predictions. *MedRxiv* 2020.
- [15] Singh R, Adhikari R. Age-structured impact of social distancing on the covid-19 epidemic in india. *arXiv preprint arXiv:200312055* 2020.
- [16] Chen T, Rui J, Wang Q, Zhao Z, Cui J-A, Yin L. A mathematical model for simulating the transmission of wuhan novel coronavirus. *bioRxiv* 2020.
- [17] Kucharski AJ, Russell TW, Diamond C, Liu Y, Edmunds J, Funk S, et al. Early dynamics of transmission and control of COVID-19: a mathematical modelling study. *The Lancet Infectious Diseases* 2020.
- [18] Peng L, Yang W, Zhang D, Zhuge C, Hong L. Epidemic analysis of covid-19 in china by dynamical modeling. *arXiv preprint arXiv:200206563* 2020.
- [19] Gumel AB, Ruan S, Day T, Watmough J, Brauer F, Van den Driessche P, et al. Modelling strategies for controlling sars outbreaks. *Proc R Soc Lond Ser B* 2004;271(1554):2223–32.
- [20] Mandal S, Bhatnagar T, Arinaminpathy N, Agarwal A, Chowdhury A, Murhekar M, et al. Prudent public health intervention strategies to control the coronavirus disease 2019 transmission in india: a mathematical model-based approach. *Indian J Med Res* 2020;151(2–3):190.
- [21] Statewise population data. <http://statisticstimes.com/demographics/population-of-indian-states.php> Retrieved : 2020-04-05; 2019.
- [22] Life expectancy at birth. <https://niti.gov.in/content/life-expectancy> Retrieved : 2020-04-05; 2019.
- [23] Sardar T, Mukhopadhyay S, Bhowmick AR, Chattopadhyay J. An optimal cost effectiveness study on zimbabwe cholera seasonal data from 2008–2011. *PLoS ONE* 2013;8(12):e81231.
- [24] Haario H, Laine M, Mira A, Saksman E. Dram: efficient adaptive mcmc. *Stat Comput* 2006;16(4):339–54.
- [25] Sardar T, Saha B. Mathematical analysis of a power-law form time dependent vector-borne disease transmission model. *Math Biosci* 2017;288:109–23.
- [26] Shaub D, Ellis P. forecastHybrid: convenient functions for ensemble time series forecasts; 2020. <https://gitlab.com/dashaub/forecastHybrid>, <https://github.com/ellisp/forecastHybrid>.
- [27] World's biggest lockdown may have cost Rs 7–8 lakh crore to Indian economy. <https://economictimes.indiatimes.com/news/economy/finance/worlds-biggest-lockdown-may-have-cost-rs-7-8-lakh-crore-to-indian-economy/articleshow/75123004.cms?from=mdr> Published on: 2020-04-13; 2020a.
- [28] Coronavirus: 5 Indian sectors that need urgent help as virus ravages economy. <https://www.indiatoday.in/business/story/coronavirus-5-indian-sectors-that-need-urgent-help-as-virus-ravages-economy-1670099-2020-04-23> Published on: 2020-04-24; 2020.
- [29] Red, orange, green zones may come up during extended lockdown. <https://economictimes.indiatimes.com/news/politics-and-nation/red-orange-green-zones-may-come-up-during-extended-lockdown/articleshow/75101054.cms?from=mdr> Published on: 2020-04-14; 2020b.
- [30] COVID-19 lockdown relaxation: Full list of activities allowed from april 20; details. <https://www.financialexpress.com/lifestyle/covid-19-lockdown-relaxation-full-list-of-activities-allowed-from-april-20-details/1933136/> Published on: 2020-04-19; 2020.
- [31] Coronavirus lockdown | railways to restart passenger services in phased manner. <https://www.thehindu.com/news/national/coronavirus-lockdown-railways-to-resume-select-passenger-train-services-from-may-12/article31551514.ece> Published on: 2020-05-10; 2020.
- [32] Van den Driessche P, Watmough J. Reproduction numbers and sub-threshold endemic equilibria for compartmental models of disease transmission. *Math Biosci* 2002;180(1–2):29–48.

- [33] Rothman KJ, Greenland S, Lash TL. *Modern epidemiology*. Lippincott Williams & Wilkins; 2008.
- [34] Marino S, Hogue IB, Ray CJ, Kirschner DE. A methodology for performing global uncertainty and sensitivity analysis in systems biology. *J Theor Biol* 2008;254(1):178–96.
- [35] 334 coronavirus "super-spreaders" found in ahmedabad: Officials. <https://www.ndtv.com/ahmedabad-news/coronavirus-india-334-covid-19-super-spreaders-found-in-ahmedabad-gujarat-official-2226442> Published on: 2020-05-10; 2020a.
- [36] Liu Y, Gayle AA, Wilder-Smith A, Rocklöv J. The reproductive number of COVID-19 is higher compared to SARS coronavirus. *J Travel Med* 2020.
- [37] 19 Doctors, 38 Nurses Among 480 Infected With Coronavirus In AIIMS. <https://www.ndtv.com/delhi-news/coronavirus-19-doctors-38-nurses-among-480-infected-in-aiims-2240563> Published on: 2020-06-04; 2020b.
- [38] What the cms told pm modi during consultations over covid-19. [https://timesofindia.indiatimes.com/india/what-the-cms-told-pm-\(?PMU?\)modi-during-consultations-over-covid-19/articleshow/75677731.cms](https://timesofindia.indiatimes.com/india/what-the-cms-told-pm-(?PMU?)modi-during-consultations-over-covid-19/articleshow/75677731.cms) Published on: 2020-05-11; 2020.