

# Small Molecule-directed Immunotherapy against Recurrent Infection by *Mycobacterium tuberculosis*<sup>\*S</sup>

Received for publication, February 13, 2014, and in revised form, April 2, 2014. Published, JBC Papers in Press, April 7, 2014, DOI 10.1074/jbc.M114.558098

Debapriya Bhattacharya<sup>‡</sup>, Ved Prakash Dwivedi<sup>‡</sup>, Mamoudou Maiga<sup>§</sup>, Mariama Maiga<sup>§</sup>, Luc Van Kaer<sup>¶</sup>, William R. Bishai<sup>§</sup>, and Gobardhan Das<sup>‡1</sup>

From the <sup>‡</sup>Laboratory Medicine and Medical Sciences, College of Health Sciences, University of Kwazulu Natal, Durban 4001, South Africa, the <sup>§</sup>Center for Tuberculosis Research, Department of Medicine, The Johns Hopkins University, Baltimore, Maryland 21231-1001, and the <sup>¶</sup>Department of Pathology, Microbiology and Immunology, Vanderbilt University School of Medicine, Nashville, Tennessee 37232

**Background:** *M. tuberculosis* evades host-immune-responses by polarizing T helper (Th)2 and regulatory T cell (Treg) responses, which diminish protective Th1 responses.

**Results:** Mice that are unable to generate Th2 cells and Tregs are resistant to *M. tuberculosis* infection. Simultaneous inhibition of these T cell subsets by therapeutic compounds dramatically reduced bacterial burden.

**Conclusion:** Inhibition of Th2 and Treg cells increases Th1 responses that protect against *M. tuberculosis* infection.

**Significance:** As therapeutic agents employed here do not directly act on harbored pathogens, they should avoid generation of drug-resistant *M. tuberculosis* variants.

Tuberculosis remains the biggest infectious threat to humanity with one-third of the population infected and 1.4 million deaths and 8.7 million new cases annually. Current tuberculosis therapy is lengthy and consists of multiple antimicrobials, which causes poor compliance and high treatment dropout, resulting in the development of drug-resistant variants of tuberculosis. Therefore, alternate methods to treat tuberculosis are urgently needed. *Mycobacterium tuberculosis* evades host immune responses by inducing T helper (Th)2 and regulatory T (Treg) cell responses, which diminish protective Th1 responses. Here, we show that animals (Stat-6<sup>-/-</sup>CD4-TGFβRIIDN mice) that are unable to generate both Th2 cells and Tregs are highly resistant to *M. tuberculosis* infection. Furthermore, simultaneous inhibition of these two subsets of Th cells by therapeutic compounds dramatically reduced bacterial burden in different organs. This treatment was associated with the generation of protective Th1 immune responses. As these therapeutic agents are not directed to the harbored organisms, they should avoid the risk of promoting the development of drug-resistant *M. tuberculosis* variants.

Tuberculosis represents an enormous burden to global health, with ~8.7 million new cases and 1.4 million deaths annually (1). *Mycobacterium tuberculosis* is primarily transmitted through the respiratory route and causes active tuberculosis in 5–10% of infected individuals. The host response to the organism is a major determinant of the out-

come of infection, and cell-mediated immunity plays a central role in host resistance to this deadly disease. Studies with tuberculosis patients and in animal models have indicated indispensable roles of both CD4<sup>+</sup> and CD8<sup>+</sup> T cells in host resistance against *M. tuberculosis* infection (2). Consequently, HIV-infected individuals are profoundly more susceptible to *M. tuberculosis* infection and reactivation of latent infection (3, 4). Collectively, these studies have indicated that CD4<sup>+</sup> T helper (Th)<sup>2</sup> cells play a key role in controlling human tuberculosis.

*M. tuberculosis* evades host immune responses by altering the balance of Th cell responses. It is now clear that Th1 cells, which produce IFN-γ and lymphotoxin, play a central role in host resistance to *M. tuberculosis* infection. Therefore, humans or animals with defective Th1 responses are highly susceptible to *M. tuberculosis* infection and disease (5, 6). However, the presence of Th1 cell responses is not sufficient to confer host-resistance against *M. tuberculosis* infection (7, 8). Th2 cells, which produce IL-4, IL-5, and IL-13, assist in disease progression by antagonizing Th1-type immune responses (6). Expression of IL-4 has been detected in human granulomas (9) and is well correlated with the immunopathology predictive of tuberculosis (10, 11). Furthermore, strong Th2 responses have been observed in Bacille Calmette Guérin-vaccinated patients who failed to be protected against *M. tuberculosis* infection (12, 13). Similarly, IL-4-deficient mice display a partial resistance to *M. tuberculosis* infection (14, 15). Therefore, these findings suggest that Th2 cells contribute to susceptibility against *M. tuberculosis* infection. Recent studies have further indicated that *M. tuberculosis* induces antigen-specific, FoxP3-expressing regulatory T cells (Tregs) (16) in the draining lymph nodes (17), which inhibit protective immune responses by hindering IFN-γ production by T cells through production of TGF-β and

\* This work was supported by grants from The Wellcome Trust, Department of Biotechnology India Alliance, Department of Biotechnology, Council for Scientific and Industrial research-Open Source Drug Discovery (CSIR-OSDD) program Government of India, and College of Health Sciences, University of Kwazulu Natal (Durban, South Africa).

⌘ Author's Choice—Final version full access.

S This article contains supplemental Table 1 and Fig. 1.

<sup>1</sup> To whom correspondence should be addressed: Special Centre for Molecular Medicine, Jawaharlal Neheru University, New Delhi 110067, India. E-mail: gobardhan.das07@gmail.com.

<sup>2</sup> The abbreviations used are: Th, T helper; Treg, regulatory T; CSA, complete soluble antigen; APC, antigen-presenting cell; D4476, 4-[4-(2,3-dihydro-1,4-benzodioxin-6-yl)-5-(2-pyridinyl)-1H-imidazol-2-yl] benzene.

IL-10 (18–20), thereby promoting disease progression. Therefore, to understand the relative importance of distinct Th cell subsets required to confer resistance against tuberculosis, we have generated animals with impairments in the generation of either Th1 cells, Th2 cells, Tregs, or combinations of these cells. These animals were infected with a low dose (~110 bacilli/mouse) of the virulent *M. tuberculosis* strain H37Rv through the aerosol route. We demonstrated that animals that are unable to generate Th2 cell responses and Tregs are strongly resistant to *M. tuberculosis* infection. Furthermore, simultaneous inhibition of the differentiation of Th2 cells and Tregs by the therapeutic compounds suplatost tosylate ([3-[[4-(3-ethoxy-2-hydroxypropoxy)phenyl]amino]-3-oxopropyl]dimethylsulfonium 4-methylbenzenesulfonate) and D4476 (4-[4-(2,3-dihydro-1,4-benzodioxin-6-yl)-5-(2-pyridinyl)-1H-imidiazol-2-yl]benzene), respectively, substantially reduced bacterial growth in different organs. Therefore, our findings have important implications for the development of improved tuberculosis therapies.

## EXPERIMENTAL PROCEDURES

**Ethics Statement**—Animal experiments were performed according to the guidelines approved by the Institutional Animal Ethics Committee of International Centre for Genetic Engineering and Biotechnology (ICGEB) (New Delhi, India) and the Department of Biotechnology guidelines (government of India). All mice used for experiments were ethically sacrificed by asphyxiation in carbon dioxide according to institutional and Department of Biotechnology regulations.

**Bacterial Infections**—*M. tuberculosis* H37Rv strain was grown in Middlebrook 7H9 broth (BD Biosciences, Sparks, MD) containing 0.02% Tween 80 to mid-log phase at 37 °C for 3 weeks, aliquoted, and frozen at –80 °C until use. Viable bacterial number was determined on 7H11 agar plates (BD Biosciences) with oleic acid albumin dextrose catalase enrichment (BD Biosciences). Mice were infected via the aerosol route using the nebulizer compartment of an airborne infection apparatus. After 30 min of exposure, the deposition of bacteria was ~110 bacteria/lung, which was determined by plating the lung homogenates after 24 h of infection. The numbers of viable bacteria in the lung, spleen, and liver of different types of mice were followed at regular time intervals by plating serial dilutions of individual organ homogenates onto nutrient Middlebrook 7H11 agar plates and counting bacterial colony formation after 21 days of incubation at 37 °C. All experiments with *M. tuberculosis* were performed in a biosafety level III facility approved by our Institutional Biosafety Committee of ICGEB (New Delhi, India).

**Mice**—Initially, wild type BALB/c, Stat-6<sup>-/-</sup>, T-bet<sup>-/-</sup>, and CD4-TGFβRIIDN mice were obtained from The Jackson Laboratory, and these strains were subsequently bred in the central animal facility of ICGEB (New Delhi, India). Stat-6<sup>-/-</sup>, T-bet<sup>-/-</sup>, and CD4-TGFβRIIDN mice were intercrossed to obtain Stat-6<sup>-/-</sup>T-bet<sup>-/-</sup>, Stat-6<sup>-/-</sup>CD4-TGFβRIIDN, T-bet<sup>-/-</sup>CD4-TGFβRIIDN, or Stat-6<sup>-/-</sup>T-bet<sup>-/-</sup>CD4-TGFβRIIDN mouse strains. All animals in this study were 6- to 8-week-old females, BALB/c background, and all experiments were carried out as per the approved protocol obtained from the Institutional Animal Ethics Committee.

**Drug Treatment**—Mice were infected with *M. tuberculosis* strain H37Rv as described previously. From day 1 after infection, animals were treated intraperitoneally with D4476 and/or suplatost tosylate (purchased from Tocris Biosciences) at 32 nmol/g up to day 44 after infection.

**ELISpot Assay**—We isolated lung T cells by treatment with collagenase A (1 mg/ml) and DNase concentration (25 μl/ml) at 37 °C for 30 min. The content of the lungs was then crushed through cell strainers with the help of a syringe plunger. Debris was removed by passing through loosely packed nylon wool columns. Cells were washed, and CD4<sup>+</sup> T cells were enriched with magnetic beads (Miltenyi Biotech). Spleen cells from syngeneic uninfected wild type mice were stimulated with complete soluble antigen (CSA; 50 μg/ml) of H37Rv for 1 h, γ-irradiated (15 Gy), and considered as antigen-presenting cells (APCs). CD4<sup>+</sup> T cells were cultured in the presence of APCs at a 3:1 ratio for 48 h. Similarly, CD4<sup>+</sup> T cells obtained from spleen were cultured in the presence of γ-irradiated syngeneic APCs and stimulated with CSA (50 μg/ml) as described above. Antigen-specific IFN-γ, IL-4, and IL-17-producing cells in infected lungs and spleen were detected by ELISpot assay (R & D Systems). After 48 h, CD4<sup>+</sup> T cells co-cultured with γ-irradiated APCs were seeded in antibody-coated plates at an initial density of 5 × 10<sup>4</sup> cells for lung or 5 × 10<sup>5</sup> cells for spleen per well. After 18 h, plates were developed, and the frequency and total number of responding cells were determined. Neither cells cultured in the absence of CSA nor cells from uninfected mice produced detectable spots.

**Cell Staining and Flow Cytometry**—CD4<sup>+</sup> T cells obtained from lung and spleen were cultured in the presence of γ-irradiated syngeneic APCs and stimulated with CSA (50 μg/ml) as described above. The cells (1 × 10<sup>4</sup>) were surface-stained with anti-CD4 (clone GK1.5) PerCP, anti-CD25 (clone PC61.5) APC, and anti-FoxP3 (clone MF23) PE (BD Pharmingen) antibodies. Samples were fixed in a 2% paraformaldehyde solution in PBS and analyzed using a FACSCanto flow cytometer (BD Biosciences) and FlowJo software (Tree Star, Inc.).

For mice treated with suplatost tosylate and D4476 intracellular cytokine staining of splenocytes was performed by activating cells with 50 ng/ml phorbol myristate acetate and 500 ng/ml ionomycin in the presence of 10 μg/ml brefeldin A (Sigma-Aldrich or eBiosciences) added during the last 6 h of culture. Cells were washed twice with PBS and resuspended in a permeabilization buffer (Cytofix/Cytoperm kit; BD Biosciences) and stained with different combinations of the following fluorescently conjugated monoclonal antibodies: anti-mouse CD4 (clone GK1.5) APC (eBioscience), anti-mouse CD4 (clone GK1.5) PE-Cy5 (eBioscience), anti-mouse CD4 (clone GK1.5) PE (eBioscience), anti-mouse CD4 (clone GK1.5) FITC (eBioscience), anti-mouse IFN-γ (clone XMG1.2) APC (Biolegend), anti-mouse IL-4 (clone 11B11) PE (Biolegend), and anti-mouse IL-17A (clone TC11-18H10.1) PE (Biolegend). Fluorescence intensity was measured by flow cytometry (FACSCalibur or FACSCantoII; BD Biosciences), and data were analyzed with FlowJo (TreeStar).

**Cytokine Assay**—Cytokines in the serum and culture supernatant were assayed by a Luminex microbead-based multi-

**TABLE 1**  
Genetically engineered mice used in this study and T helper cell subsets produced by them

Mouse strain	Subsets of T helper cells			
	Th1	Th2	Th17	Treg
WT	+	+	+	+
Stat6 <sup>-/-</sup>	+	-	+	+
Tbet <sup>-/-</sup>	-	+	+	+
CD4-TGFβRIIDN	+	+	-	-
Stat6 <sup>-/-</sup> Tbet <sup>-/-</sup>	-	-	+	+
Stat6 <sup>-/-</sup> CD4-TGFβRIIDN	+	-	-	-
Tbet <sup>-/-</sup> CD4-TGFβRIIDN	-	+	-	-
Stat6 <sup>-/-</sup> Tbet <sup>-/-</sup> CD4-TGFβRIIDN	-	-	-	-

plexed assay using commercially available kits according to the manufacturer's instructions (BioPlex, Bio-Rad).

**Histology**—Lungs from mice at 60 days after infection were perfused, removed, and fixed in 4.5% formalin, sectioned, and stained with hematoxylin and eosin.

**Bacterial Growth Inhibition Assay**—*M. tuberculosis* strain H37Rv was grown in 10 ml of Middlebrook 7H9 broth (Becton Dickinson, Sparks, MD) supplemented with 10% ADC (BBLTM, BD Biosciences), 0.05% Tween 80, and 0.2% glycerol at 37 °C under constant shaking. Optical density of the culture was measured at 600 nm using a spectrophotometer (Perkin-Elmer Life Sciences), and equal numbers of cells from the culture were freshly inoculated in a 30-ml flask containing fresh 7H9 broth such that the initial O.D. of the culture was 0.05. Suplatast tosylate and/or D4476 were added at a dose of 4 nM. Cells were allowed to grow at 37 °C with constant shaking. Optical density of each culture was measured and recorded every 24 h.

**Statistical Analysis**—Data represent mean ± S.D. values of four mice per group per time point for experiments with genetically engineered mice and of six mice per group per time point for experiments with small molecule-mediated immunotherapy. Statistical analyses were conducted using SPSS10 software. Significant differences between the groups were determined by analysis of variance followed by Tukey's multiple comparison tests (SPSS Software). A value of *p* ≤ 0.05 was accepted as an indication of statistical significance. All experiments were repeated twice.

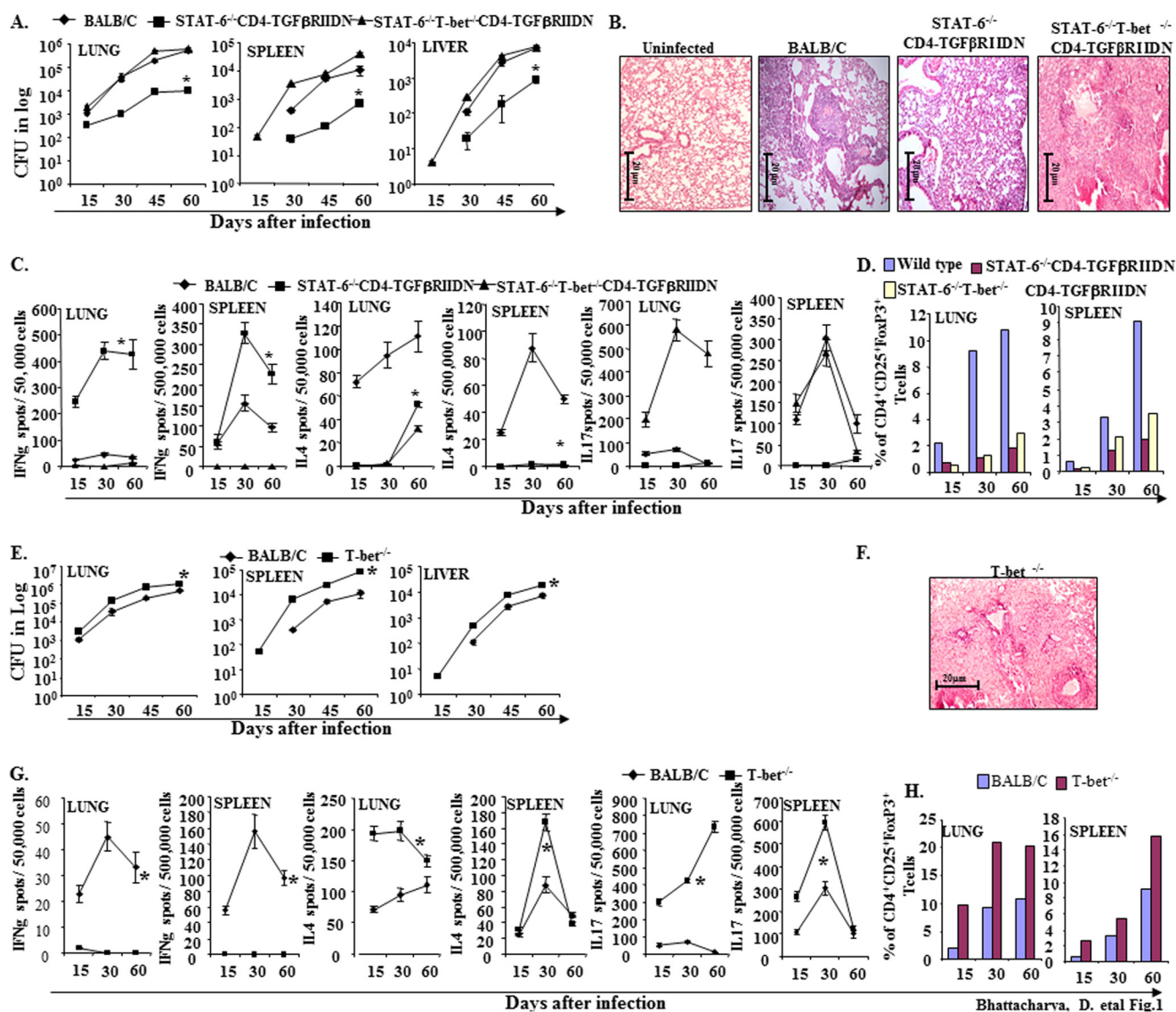
## RESULTS

**Development of a Mouse Strain Highly Resistant to *M. tuberculosis* Infection**—It has been well established that the Th cell type elicited determines susceptibility or resistance to *M. tuberculosis* infection (5). Thus, to understand the T cell subsets that are required for host resistance or disease progression, we have generated animals that are defective in generating various combinations of Th cell subsets (Table 1). T-bet is a transcription factor required for Th1 cell differentiation (21), whereas Stat-6 is a transcription factor required for Th2 cell differentiation (22), and TGF-β is required for the differentiation of Tregs (23). Therefore, we crossed mouse strains deficient in these transcription factors or with a CD4<sup>+</sup> T cell lineage-specific TGF-β-signaling deficiency to generate T-bet<sup>-/-</sup> CD4-TGFβRIIDN, Stat-6<sup>-/-</sup> CD4-TGFβRIIDN, and T-bet<sup>-/-</sup> Stat-6<sup>-/-</sup> CD4-TGFβRIIDN mice, which are unable to mount

Th1 cells and Tregs, Th2 cells and Tregs, or Th1 cells, Th2 cells, and Tregs, respectively (Table 1). As indicated in Table 1, mice that are deficient in Stat-6 and express a dominant-negative form of the TGF-β receptor in the CD4<sup>+</sup> T cell lineage (*i.e.* Stat-6<sup>-/-</sup> CD4-TGFβRIIDN mice) are defective in the generation of Th2 cells (22) and Tregs (24, 25). We found that Stat-6<sup>-/-</sup> CD4-TGFβRIIDN mice exhibited high resistance to *M. tuberculosis* infection as determined from the cfu counts in lung, spleen, and liver following infection with virulent *M. tuberculosis* (Fig. 1A). We were unable to identify any necrotic granulomas in these animals (Fig. 1B). Stat-6<sup>-/-</sup> and CD4-TGFβRIIDN animals individually showed partial resistance to infection (Fig. 2, A and E). Interestingly, any of these strains that were also deficient in T-bet, a transcription factor that is critical for Th1 cell differentiation (26), were susceptible to *M. tuberculosis* infection, as shown by bacterial counts (Figs. 1, A, and 2, A and E) and the presence of necrotic granulomas (Figs. 1B, and 2, B and F).

**Dynamics of T Cell Subsets Induced by *M. tuberculosis* in Distinct Genetically Engineered Mice**—To provide insight into the Th cell responses induced by *M. tuberculosis* in distinct genetically engineered animals, we isolated CD4<sup>+</sup> T cells from the lungs and spleens and determined the frequency of cells with a Th1, Th2, Th17, and Treg cell phenotype. As expected, Stat-6<sup>-/-</sup> CD4-TGFβRIIDN mice induced large numbers of IFN-γ-producing cells, whereas numbers of IL-4-, IL-17-, and FoxP3-positive cells were negligible (Fig. 1, C and D). Cytokines in serum and in *M. tuberculosis* antigen-stimulated splenocyte cultures similarly revealed that Stat-6<sup>-/-</sup> CD4-TGFβRIIDN mice produced high levels of IFN-γ but were unable to generate IL-4, IL-17, TGF-β, and IL-10 T cell responses (supplemental Table 1). Interestingly, we observed that all groups of animals on the CD4-TGFβRIIDN background exhibited a dramatic increase in IFN-γ-producing cells in both lung and spleen (Fig. 1, C and D, and Fig. 2, G and H). Consistent with this finding, we detected large amounts of IFN-γ in the serum and in the supernatant of *M. tuberculosis*-derived CSA-challenged splenocyte cultures from animals that were on a CD4-TGFβRIIDN and/or Stat-6<sup>-/-</sup> background (supplemental Table 1), whereas mice that were on a T-bet-deficient background showed modestly enhanced numbers of IL-4- and/or FoxP3-positive cells (Fig. 1, G and H). In sharp contrast, animals that were on a T-bet<sup>-/-</sup> background exhibited high levels of IL-4-, TGF-β-, IL-10-, and FoxP3-positive cells as well as high levels of IL-4, TGF-β, and IL-10 in serum and in response to CSA stimulation (Fig. 1, C, D, G, and H, and Fig. 2, C, D, G, and H, and supplemental Table 1). These observations suggested that, in the absence of Th2 cells and Tregs, animals generate sufficient immune responses against *M. tuberculosis* to resist disease development. On the other hand, T-bet<sup>-/-</sup> Stat-6<sup>-/-</sup> CD4-TGFβRIIDN mice are highly susceptible to *M. tuberculosis* infection (Fig. 1A), suggesting that the observed resistance of Stat-6<sup>-/-</sup> CD4-TGFβRIIDN mice to *M. tuberculosis* infection is conferred by potent Th1 responses.

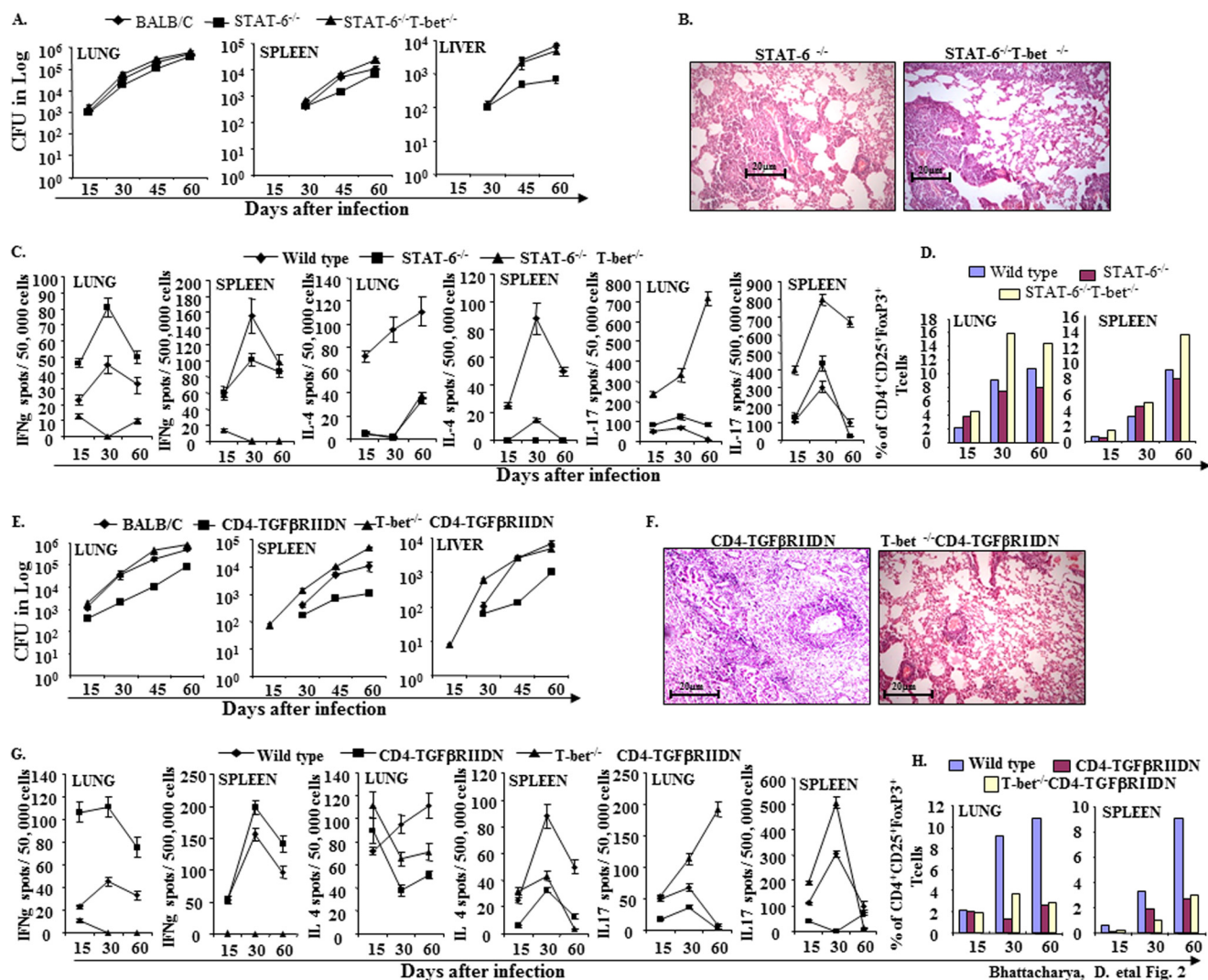
**Small Molecule-mediated Immunotherapy of *M. tuberculosis* Infection**—The preceding sections revealed that simultaneous inhibition of Th2 cells and Tregs might have therapeutic benefits for treatment of tuberculosis. IL-4 and TGF-β play critical



**FIGURE 1. Stat-6<sup>-/-</sup>CD4-TGFβRII DN animals are resistant to *M. tuberculosis* infection.** *A*, wild type BALB/c, STAT-6<sup>-/-</sup>CD4-TGFβRII DN, and STAT-6<sup>-/-</sup>T-bet<sup>-/-</sup>CD4-TGFβRII DN mice were infected with low dose (~110 cfu) H37Rv through the aerosol route. Bacterial burdens were determined in the organs and at the time points indicated. Data represent mean ± S.D. values of four mice per group per time point, and the experiment was repeated twice. *B*, histological photomicrographs (×40) of lung sections (6 μm) of wild type BALB/c, STAT-6<sup>-/-</sup>CD4-TGFβRII DN, and STAT-6<sup>-/-</sup>T-bet<sup>-/-</sup>CD4-TGFβRII DN mice at 60 days after infection, stained with hematoxylin and eosin. *C*, ELISPOT assay to show the cytokine expression in CD4<sup>+</sup> T cells in lung and spleen of *M. tuberculosis*-infected wild type BALB/c, STAT-6<sup>-/-</sup>CD4-TGFβRII DN, and STAT-6<sup>-/-</sup>T-bet<sup>-/-</sup>CD4-TGFβRII DN mice. *D*, prevalence of CD4<sup>+</sup>CD25<sup>+</sup>FoxP3<sup>+</sup> T cells in BALB/c, STAT-6<sup>-/-</sup>CD4-TGFβRII DN, and STAT-6<sup>-/-</sup>T-bet<sup>-/-</sup>CD4-TGFβRII DN mice was determined by FACS analysis. *E*, wild type BALB/c and T-bet<sup>-/-</sup> mice were infected with low dose (~110 cfu) H37Rv through the aerosol route. Bacterial burdens were determined in the organs and at the time points indicated. Data represent mean ± S.D. values of four mice per group per time point, and the experiment was repeated twice. *F*, photomicrographs (×40) of lung sections (6 μm) of T-bet<sup>-/-</sup> mice at 60 days after infection, stained with hematoxylin and eosin. *G*, cytokine expression in CD4<sup>+</sup> T cells of lung and spleen from *M. tuberculosis* infected wild type BALB/c and T-bet<sup>-/-</sup> mice was determined by ELISPOT assay. *H*, prevalence of CD4<sup>+</sup>CD25<sup>+</sup>FoxP3<sup>+</sup> T cells in pooled T cells obtained from lung and spleen of infected wild type BALB/c and T-bet<sup>-/-</sup> mice. Significant differences between the groups were determined by analysis of variance followed by Tukey's multiple comparison tests. Asterisk indicates statistical significance,  $p \leq 0.05$ .

roles in the differentiation of Th2 cells and Tregs, respectively. Therefore, we tested whether combined inhibition of IL-4 and TGF-β signaling with small molecules could confer resistance to *M. tuberculosis* infection. Suplatast tosylate disrupts IL-4 signaling and thus inhibits activation and differentiation of Th2 cells (27). Similarly, D4476 inhibits TGF-β signaling (28). We infected wild type BALB/c animals with a low dose of *M. tuberculosis* H37Rv through the aerosol route and then treated the animals with these two drugs. As expected, combined treatment highly diminished bacterial burden in lung, spleen, and liver (Fig. 3, *A* and *B*). Necrotic granulomas were also markedly

reduced in animals that received combined therapy, although lungs were modestly inflamed (Fig. 3*C*). Either of these compounds alone was only partially effective. However, combined therapy dramatically enhanced induction of IFN-γ-producing cells and inhibited induction of IL-4-as well as FoxP3-producing cells but had modest effects on IL-17-producing cells (Fig. 4). Interestingly, combined treatment was unable to protect T-bet<sup>-/-</sup> mice against *M. tuberculosis* infection, suggesting that the therapeutic effects of the small molecules were mediated by promoting protective Th1 cell responses (data not shown).



**FIGURE 2. *Stat-6*<sup>-/-</sup> and *CD4-TGFβRIIDN* animals are partially resistant to *M. tuberculosis* infection.** A, wild type BALB/c, *STAT-6*<sup>-/-</sup>, and *STAT-6*<sup>-/-</sup>*T-bet*<sup>-/-</sup> mice were infected with low dose (~110 cfu) H37Rv through the aerosol route. Bacterial burdens were determined in the organs and at the time points indicated. Data represent mean ± S.D. values of four mice per group per time point, and the experiment was repeated twice. B, histological photomicrographs (×40) of lung sections (6 μm) of *STAT-6*<sup>-/-</sup> and *STAT-6*<sup>-/-</sup>*T-bet*<sup>-/-</sup> mice at 60 days after infection. C, ELISPOT assay of cytokine expression in CD4<sup>+</sup> T cells of lung and spleen from *M. tuberculosis*-infected wild type BALB/c, *STAT-6*<sup>-/-</sup>, and *STAT-6*<sup>-/-</sup>*T-bet*<sup>-/-</sup> mice. D, prevalence of CD4<sup>+</sup>CD25<sup>+</sup>FoxP3<sup>+</sup> T cells was determined by FACS analysis. E, wild type BALB/c, *CD4-TGFβRIIDN*, and *T-bet*<sup>-/-</sup>*CD4-TGFβRIIDN* mice were infected with low dose (~110 cfu) H37Rv through the aerosol route. Bacterial burdens were determined in the organs and at the time points indicated. Data represent mean ± S.D. values of four mice per group per time point, and the experiment was repeated twice. F, Histological photomicrographs (×40) of lung sections (6 μm) of *CD4-TGFβRIIDN*, and *T-bet*<sup>-/-</sup>*CD4-TGFβRIIDN* mice at 60 days after infection. G, ELISPOT assay of cytokine expression in CD4<sup>+</sup> T cells of lung and spleen from *M. tuberculosis*-infected wild type BALB/c, *CD4-TGFβRIIDN*, and *T-bet*<sup>-/-</sup>*CD4-TGFβRIIDN* mice. H, prevalence of CD4<sup>+</sup>CD25<sup>+</sup>FoxP3<sup>+</sup> T cells in BALB/c, *CD4-TGFβRIIDN*, and *T-bet*<sup>-/-</sup>*CD4-TGFβRIIDN* mice was determined by FACS analysis.

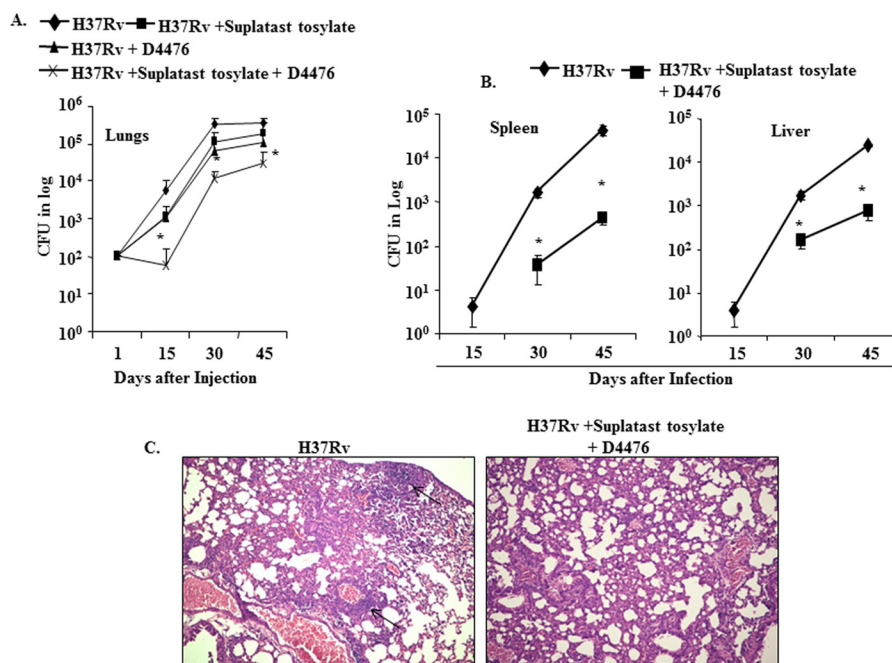
The studies described in the preceding sections suggested that simultaneous inhibition of IL-4 and TGF-β signaling permits the development of enhanced Th1 responses and facilitates clearance of *M. tuberculosis*. Next, we tested whether these compounds have any direct effects on the growth of the *M. tuberculosis* organisms. As expected, the compounds did not show any significant effect on bacterial growth in liquid culture (supplemental Fig. 1).

TGF-β is an important regulatory cytokine that plays a critical role in the maintenance of immune tolerance (28). TGF-β-deficient animals are embryonically lethal, and *CD4-TGFβRIIDN* animals display inflammation in multiple organs with enhanced auto-activation of Th1 and Th2 cells (29, 30). Therefore, prolonged inhibition of TGF-β might unmask autoimmunity, which would

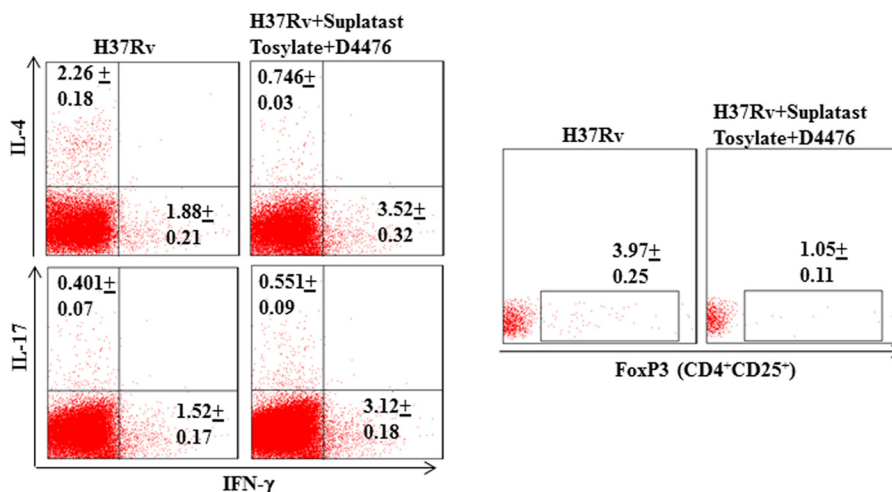
limit its therapeutic use. However, we did not observe any enhanced inflammation upon infection of *CD4-TGFβRIIDN* animals with *M. tuberculosis*. Likewise, the short treatment period employed with suplatast tosylate and D4476 did not culminate into signs of excessive inflammation (data not shown).

## DISCUSSION

It is now well accepted that Th cells play a central role in determining susceptibility or resistance to *M. tuberculosis* infection (31). During progression of tuberculosis, *M. tuberculosis* elicits Th2 and Treg cell responses in susceptible hosts, which facilitates disease progression by antagonizing host protective immune responses. Our results suggested that Th1 cells are necessary and sufficient for resistance against tuberculo-



**FIGURE 3. Simultaneous inhibition of Th2 cytokines and TGF- $\beta$  protects against *M. tuberculosis* infection.** Wild type BALB/c and mutant mice were infected (110 cfu/mice) through the aerosol route with *M. tuberculosis* (H37Rv). These mice were injected intraperitoneally with D4476 (a TGF $\beta$ RI inhibitor) and/or suplatast tosylate (a Th2 inhibitor) at 32 nmol/g of body weight starting from the 1st day until the 44th day after aerosol challenge. At different time points (15, 30, 45 days), six mice from each group were sacrificed, and bacterial loads (cfu) were determined in lungs (A), spleen, and liver (B). C, histological photomicrographs ( $\times 10$ ) of lung sections (6  $\mu$ m) at 60 days after infection of the indicated mice, stained with hematoxylin and eosin. Arrows indicate granulomatous regions. Significant differences between the groups were determined by analysis of variance followed by Tukey's multiple comparison tests. Asterisk indicates statistical significance,  $p \leq 0.05$ .



**FIGURE 4. Intracellular cytokine profiling after combined therapy.** FACS data show the number of IFN- $\gamma$ , IL-4, IL-17, as well as FoxP3-producing cells after combined treatment with suplatast tosylate and D4476.

sis, which is in agreement with recently published reports (32). At any given time Th1 and Th2 cells are in a dynamic balance and, thus, mounting Th2 cells decreases host protective Th1 responses. In fact, it has been shown that animals that are unable to mount Th2 responses are partially resistant to *M. tuberculosis* infection (33). Thus, inhibition of Th1 responses by down-regulating IL-12 production in infected cells and eliciting Th2 responses represents a host immune evasion mechanism employed by *M. tuberculosis*. Recently, it has been shown that *M. tuberculosis* facilitates not only Th2 responses but also induces strong Treg cell responses (34). Treg cells have been implicated in inhibiting host protec-

tive immune responses (34). TGF- $\beta$  is required for the differentiation of Treg cells and is produced by the infected cells and by mesenchymal stem cells that infiltrate the site of infection (35, 36). Our data are also consistent with a recent publication (17) providing evidence for profound expansion of Treg cells in the draining lymph nodes during *M. tuberculosis* infection and with previous reports that TGF- $\beta$  is required for the expansion and maintenance of Tregs. In fact, previous data indicated that mice impaired in TGF- $\beta$  signaling are partially resistant to *M. tuberculosis* infection (37).

It has been shown that inhibition of Th2 cells or Tregs individually confers partial resistance to *M. tuberculosis* infection

(14, 37, 38). Therefore, to test whether combined inhibition of these two subsets has additive therapeutic effects, we generated animals that are defective in both of these subsets (Stat-6<sup>-/-</sup>CD4-TGFβRIIDN mice). These animals exhibited increased resistance to *M. tuberculosis* infection compared with the individual strains. Therefore, these data suggest that simultaneous inhibition of Th2 cells and Tregs has a superior therapeutic benefit compared with inhibition of the individual subsets alone. Nevertheless, we cannot formally exclude the possibility that deficiency in Stat-6 and TGF-β additionally influences *M. tuberculosis* infection in a manner that is independent of their effects on Th2 and Treg cell responses, respectively.

Inhibiting the differentiation of Th2 cells and Tregs can be achieved by antibodies against IL-4 and TGF-β. However, antibodies are expensive and have several disadvantages such as antigenicity. Therefore, we investigated therapeutic small molecules that could inhibit Th2 cells and Tregs. Suplatast tosylate has been shown to disrupt production of IL-4 and other Th2-type cytokines without impeding IFN-γ production (39). While its molecular mechanism of action has not been fully elucidated, suplatast tosylate inhibits IL-4 production by its direct effects on T cells (40). D4476 is an ALK5 inhibitor and thus prevents Smad3 activation and suppresses TGF-β receptor I gene expression (28). Simultaneous treatment of *M. tuberculosis* infected mice with these two compounds dramatically inhibited bacterial burden in different organs. This mode of therapy was not effective in T-bet-deficient animals, suggesting that it is mainly dependent on the induction of Th1 cell responses. However, it remains possible that these reagents have effects on *M. tuberculosis* infection that are independent of their effects on Th2 and Treg cell responses. Nevertheless, our findings demonstrate that small molecule-directed immunotherapy is effective for the treatment of tuberculosis.

The therapeutic agents employed here are not directed against the harbored pathogen itself. Thus, this mode of therapy should not discriminate between different types of *M. tuberculosis* pathogens, regardless of their antibiotic resistance properties.

Although our therapeutic strategy is novel, we believe that it cannot be employed for a prolonged time period. TGF-β plays an important role in maintaining immune homeostasis and transgenic animals expressing a dominant negative form of TGF-βRII exhibit multi organ inflammation and death (29, 30). Similarly, inhibition of Th2 cells may lead to susceptibility toward parasitic infections (41). Thus, we propose that these compounds could be employed in human patients for relatively short treatment periods. Combining these immunomodulators with antibiotics might reduce the length of treatment and thus avoid the generation of multiple drug-resistant and extremely drug-resistant strains.

In summary, our results have revealed that simultaneous inhibition of Th2 cells and Tregs has great potential for treatment of tuberculosis with small molecules. As these therapeutic agents are not directed toward the harbored pathogens, they should avoid the generation of multiple drug-resistant and extremely drug-resistant variants. In addition, these therapeutic agents are less expensive than conventional recombinant therapeutic agents such as antibodies and should avoid compli-

cations associated with recombinant immunotherapeutic agents.

*Acknowledgments*—The work requiring BSL-3 containment was carried out at the Department of Biotechnology-supported Tuberculosis Aerosol Challenge Facility at the International Center for Genetic Engineering and Biotechnology, New Delhi.

## REFERENCES

- World Health Organization (2012) Global Tuberculosis Report 2012, Geneva, Switzerland
- Chensue, S. W., Warmington, K., Ruth, J., Lincoln, P., Kuo, M. C., and Kunkel, S. L. (1994) Cytokine responses during mycobacterial and schistosomal antigen-induced pulmonary granuloma formation. Production of Th1 and Th2 cytokines and relative contribution of tumor necrosis factor. *Am. J. Pathol.* **145**, 1105–1113
- Barnes, P. F., Bloch, A. B., Davidson, P. T., and Snider, D. E., Jr. (1991) Tuberculosis in patients with human immunodeficiency virus infection. *N. Engl. J. Med.* **324**, 1644–1650
- Snider, D. E., Jr., and Roper, W. L. (1992) The new tuberculosis. *N. Engl. J. Med.* **326**, 703–705
- Flynn, J. L., and Chan, J. (2001) Immunology of tuberculosis. *Annu. Rev. Immunol.* **19**, 93–129
- Lienhardt, C., Azzurri, A., Amedei, A., Fielding, K., Sillah, J., Sow, O. Y., Bah, B., Benagiano, M., Diallo, A., Manetti, R., Manneh, K., Gustafson, P., Bennett, S., D'Elios, M. M., McAdam, K., and Del Prete, G. (2002) Active tuberculosis in Africa is associated with reduced Th1 and increased Th2 activity *in vivo*. *Eur. J. Immunol.* **32**, 1605–1613
- Agger, E. M., and Andersen, P. (2001) Tuberculosis subunit vaccine development: on the role of interferon-γ. *Vaccine* **19**, 2298–2302
- Demissie, A., Abebe, M., Aseffa, A., Rook, G., Fletcher, H., Zumla, A., Welding, K., Brock, I., Andersen, P., and Doherty, T. M. (2004) Healthy individuals that control a latent infection with *Mycobacterium tuberculosis* express high levels of Th1 cytokines and the IL-4 antagonist IL-4Δ2. *J. Immunol.* **172**, 6938–6943
- Fenhalls, G., Wong, A., Bezuidenhout, J., van Helden, P., Bardin, P., and Lukey, P. T. (2000) *In situ* production of γ interferon, interleukin-4, and tumor necrosis factor α mRNA in human lung tuberculous granulomas. *Infect. Immun.* **68**, 2827–2836
- Ordway, D. J., Martins, M. S., Costa, L. M., Freire, M. S., Arroz, M. J., Dockrell, H. M., and Ventura, F. A. (2005) [Increased IL-4 production in response to virulent *Mycobacterium tuberculosis* in tuberculosis patients with advanced disease]. *Acta Med. Port.* **18**, 27–36
- Seah, G. T., Scott, G. M., and Rook, G. A. (2000) Type 2 cytokine gene activation and its relationship to extent of disease in patients with tuberculosis. *J. Infect. Dis.* **181**, 385–389
- Dlugovitzky, D., Bottasso, O., Dominino, J. C., Valentini, E., Hartopp, R., Singh, M., Stanford, C., and Stanford, J. (1999) Clinical and serological studies of tuberculosis patients in Argentina receiving immunotherapy with *Mycobacterium vaccae* (SRL 172). *Respir. Med.* **93**, 557–562
- Rook, G. A., Dheda, K., and Zumla, A. (2005) Immune responses to tuberculosis in developing countries: implications for new vaccines. *Nat. Rev. Immunol.* **5**, 661–667
- Hernandez-Pando, R., Aguilar, D., Hernandez, M. L., Orozco, H., and Rook, G. (2004) Pulmonary tuberculosis in BALB/c mice with non-functional IL-4 genes: changes in the inflammatory effects of TNF-α and in the regulation of fibrosis. *Eur. J. Immunol.* **34**, 174–183
- Rook, G. A., and Hernandez-Pando, R. (1996) The pathogenesis of tuberculosis. *Annu. Rev. Microbiol.* **50**, 259–284
- Scott-Browne, J. P., Shafiani, S., Tucker-Heard, G., Ishida-Tsubota, K., Fontenot, J. D., Rudensky, A. Y., Bevan, M. J., and Urdahl, K. B. (2007) Expansion and function of Foxp3-expressing T regulatory cells during tuberculosis. *J. Exp. Med.* **204**, 2159–2169
- Shafiani, S., Dinh, C., Ertelt, J. M., Mogueche, A. O., Siddiqui, I., Smigiel, K. S., Sharma, P., Campbell, D. J., Way, S. S., and Urdahl, K. B. (2013) Pathogen-specific Treg cells expand early during *Mycobacterium tuber-*

- culosis* infection but are later eliminated in response to interleukin-12. *Immunity* **38**, 1261–1270
18. Nakamura, K., Kitani, A., and Strober, W. (2001) Cell contact-dependent immunosuppression by CD4<sup>+</sup>CD25<sup>+</sup> regulatory T cells is mediated by cell surface-bound transforming growth factor  $\beta$ . *J. Exp. Med.* **194**, 629–644
  19. Peng, Y., Laouar, Y., Li, M. O., Green, E. A., and Flavell, R. A. (2004) TGF- $\beta$  regulates *in vivo* expansion of Foxp3-expressing CD4<sup>+</sup>CD25<sup>+</sup> regulatory T cells responsible for protection against diabetes. *Proc. Natl. Acad. Sci. U.S.A.* **101**, 4572–4577
  20. Randolph, D. A., and Fathman, C. G. (2006) Cd4<sup>+</sup>Cd25<sup>+</sup> regulatory T cells and their therapeutic potential. *Annu. Rev. Med.* **57**, 381–402
  21. Szabo, S. J., Kim, S. T., Costa, G. L., Zhang, X., Fathman, C. G., and Glimcher, L. H. (2000) A novel transcription factor, T-bet, directs Th1 lineage commitment. *Cell* **100**, 655–669
  22. Elo, L. L., Järvenpää, H., Tuomela, S., Raghav, S., Ahlfors, H., Laurila, K., Gupta, B., Lund, R. J., Tahvanainen, J., Hawkins, R. D., Oresic, M., Lähdesmäki, H., Rasool, O., Rao, K. V., Aittokallio, T., and Laheesmaa, R. (2010) Genome-wide profiling of interleukin-4 and STAT6 transcription factor regulation of human Th2 cell programming. *Immunity* **32**, 852–862
  23. Chen, W., and Konkel, J. E. (2010) TGF- $\beta$  and 'adaptive' Foxp3<sup>+</sup> regulatory T cells. *J. Mol. Cell. Biol.* **2**, 30–36
  24. Marie, J. C., Letterio, J. J., Gavin, M., and Rudensky, A. Y. (2005) TGF- $\beta$ 1 maintains suppressor function and Foxp3 expression in CD4<sup>+</sup>CD25<sup>+</sup> regulatory T cells. *J. Exp. Med.* **201**, 1061–1067
  25. Oertelt, S., Lian, Z. X., Cheng, C. M., Chuang, Y. H., Padgett, K. A., He, X. S., Ridgway, W. M., Ansari, A. A., Coppel, R. L., Li, M. O., Flavell, R. A., Kronenberg, M., Mackay, I. R., and Gershwin, M. E. (2006) Anti-mitochondrial antibodies and primary biliary cirrhosis in TGF- $\beta$  receptor II dominant-negative mice. *J. Immunol.* **177**, 1655–1660
  26. Szabo, S. J., Sullivan, B. M., Stemann, C., Satoskar, A. R., Sleckman, B. P., and Glimcher, L. H. (2002) Distinct effects of T-bet in TH1 lineage commitment and IFN- $\gamma$  production in CD4 and CD8 T cells. *Science* **295**, 338–342
  27. Kurokawa, M., Kawazu, K., Asano, K., Fumio, K., Mita, A., and Adachi, M. (2001) Suppressive effects of anti-allergic agent suplatostilate (IPD-1151T) on the expression of co-stimulatory molecules on mouse splenocytes *in vivo*. *Mediators Inflamm.* **10**, 333–337
  28. Callahan, J. F., Burgess, J. L., Fornwald, J. A., Gaster, L. M., Harling, J. D., Harrington, F. P., Heer, J., Kwon, C., Lehr, R., Mathur, A., Olson, B. A., Weinstock, J., and Laping, N. J. (2002) Identification of novel inhibitors of the transforming growth factor  $\beta$ 1 (TGF- $\beta$ 1) type 1 receptor (ALK5). *J. Med. Chem.* **45**, 999–1001
  29. Gorelik, L., and Flavell, R. A. (2000) Abrogation of TGF $\beta$  signaling in T cells leads to spontaneous T cell differentiation and autoimmune disease. *Immunity* **12**, 171–181
  30. Kulkarni, A. B., Huh, C. G., Becker, D., Geiser, A., Lyght, M., Flanders, K. C., Roberts, A. B., Sporn, M. B., Ward, J. M., and Karlsson, S. (1993) Transforming growth factor  $\beta$ 1 null mutation in mice causes excessive inflammatory response and early death. *Proc. Natl. Acad. Sci. U.S.A.* **90**, 770–774
  31. Walzl, G., Ronacher, K., Hanekom, W., Scriba, T. J., and Zumla, A. (2011) Immunological biomarkers of tuberculosis. *Nat. Rev. Immunol.* **11**, 343–354
  32. Sweeney, K. A., Dao, D. N., Goldberg, M. F., Hsu, T., Venkataswamy, M. M., Henaio-Tamayo, M., Ordway, D., Sellers, R. S., Jain, P., Chen, B., Chen, M., Kim, J., Lukose, R., Chan, J., Orme, I. M., Porcelli, S. A., and Jacobs, W. R., Jr. (2011) A recombinant *Mycobacterium smegmatis* induces potent bactericidal immunity against *Mycobacterium tuberculosis*. *Nat. Med.* **17**, 1261–1268
  33. Rook, G. A., Hernandez-Pando, R., Dheda, K., and Teng Seah, G. (2004) IL-4 in tuberculosis: implications for vaccine design. *Trends Immunol.* **25**, 483–488
  34. Boussiotis, V. A., Tsai, E. Y., Yunis, E. J., Thim, S., Delgado, J. C., Dascher, C. C., Berezovskaya, A., Rousset, D., Reynes, J. M., and Goldfeld, A. E. (2000) IL-10-producing T cells suppress immune responses in anergic tuberculosis patients. *J. Clin. Invest.* **105**, 1317–1325
  35. Raghuvanshi, S., Sharma, P., Singh, S., Van Kaer, L., and Das, G. (2010) *Mycobacterium tuberculosis* evades host immunity by recruiting mesenchymal stem cells. *Proc. Natl. Acad. Sci. U.S.A.* **107**, 21653–21658
  36. Toossi, Z., and Ellner, J. J. (1998) The role of TGF  $\beta$  in the pathogenesis of human tuberculosis. *Clin. Immunol. Immunopathol.* **87**, 107–114
  37. Jayaswal, S., Kamal, M. A., Dua, R., Gupta, S., Majumdar, T., Das, G., Kumar, D., and Rao, K. V. (2010) Identification of host-dependent survival factors for intracellular *Mycobacterium tuberculosis* through an siRNA screen. *PLoS Pathog.* **6**, e1000839
  38. Roy, E., Brennan, J., Jolles, S., and Lowrie, D. B. (2008) Beneficial effect of anti-interleukin-4 antibody when administered in a murine model of tuberculosis infection. *Tuberculosis* **88**, 197–202
  39. Oda, N., Minoguchi, K., Yokoe, T., Hashimoto, T., Wada, K., Miyamoto, M., Tanaka, A., Kohno, Y., and Adachi, M. (1999) Effect of suplatostilate (IPD-1151T) on cytokine production by allergen-specific human Th1 and Th2 cell lines. *Life Sci.* **65**, 763–770
  40. Hennekes, H., and Asadullah, K. (2002) Strategies for targeting IL4 as a novel therapeutic approach for the treatment of atopic dermatitis. *Curr. Med. Chem. Anti. Inflamm. Anti. Allergy. Agents* 41–53
  41. van der Werf, N., Redpath, S. A., Azuma, M., Yagita, H., and Taylor M. D. (2013) Th2 cell-intrinsic hypo-responsiveness determines susceptibility to helminth infection. *PLoS Pathog.* **9**, e1003215



**Small Molecule-directed Immunotherapy against Recurrent Infection by  
*Mycobacterium tuberculosis***

Debapriya Bhattacharya, Ved Prakash Dwivedi, Mamoudou Maiga, Mariama Maiga,  
Luc Van Kaer, William R. Bishai and Gobardhan Das

*J. Biol. Chem.* 2014, 289:16508-16515.

doi: 10.1074/jbc.M114.558098 originally published online April 7, 2014

---

Access the most updated version of this article at doi: [10.1074/jbc.M114.558098](https://doi.org/10.1074/jbc.M114.558098)

Alerts:

- [When this article is cited](#)
- [When a correction for this article is posted](#)

[Click here](#) to choose from all of JBC's e-mail alerts

Supplemental material:

<http://www.jbc.org/content/suppl/2014/04/07/M114.558098.DC1>

This article cites 39 references, 10 of which can be accessed free at  
<http://www.jbc.org/content/289/23/16508.full.html#ref-list-1>