



Sequence/structural analysis of xylem proteome emphasizes pathogenesis-related proteins, chitinases and β -1, 3-glucanases as key players in grapevine defense against *Xylella fastidiosa*

Sandeep Chakraborty^{1,*}, Rafael Nascimento^{1,2,*}, Paulo A. Zaini^{2,*}, Hossein Gouran¹, Basuthkar J. Rao³, Luiz R. Goulart^{2,4} and Abhaya M. Dandekar¹

¹ Department of Plant Sciences, University of California, Davis (UC Davis), CA, United States of America

² Institute of Genetics and Biochemistry, Federal University of Uberlândia, Campus Umuarama, Uberlândia Minas Gerais, Brazil

³ Department of Biological Sciences, Tata Institute of Fundamental Research, Mumbai, Maharashtra, India

⁴ Department of Medical Microbiology and Immunology, University of California, Davis (UC Davis), CA, United States of America

* These authors contributed equally to this work.

ABSTRACT

Background. *Xylella fastidiosa*, the causative agent of various plant diseases including Pierce's disease in the US, and Citrus Variegated Chlorosis in Brazil, remains a continual source of concern and economic losses, especially since almost all commercial varieties are sensitive to this Gammaproteobacteria. Differential expression of proteins in infected tissue is an established methodology to identify key elements involved in plant defense pathways.

Methods. In the current work, we developed a methodology named CHURNER that emphasizes relevant protein functions from proteomic data, based on identification of proteins with similar structures that do not necessarily have sequence homology. Such clustering emphasizes protein functions which have multiple copies that are up/down-regulated, and highlights similar proteins which are differentially regulated. As a working example we present proteomic data enumerating differentially expressed proteins in xylem sap from grapevines that were infected with *X. fastidiosa*.

Results. Analysis of this data by CHURNER highlighted pathogenesis related PR-1 proteins, reinforcing this as the foremost protein function in xylem sap involved in the grapevine defense response to *X. fastidiosa*. β -1, 3-glucanase, which has both anti-microbial and anti-fungal activities, is also up-regulated. Simultaneously, chitinases are found to be both up and down-regulated by CHURNER, and thus the net gain of this protein function loses its significance in the defense response.

Discussion. We demonstrate how structural data can be incorporated in the pipeline of proteomic data analysis prior to making inferences on the importance of individual proteins to plant defense mechanisms. We expect CHURNER to be applicable to any proteomic data set.

Submitted 15 December 2015

Accepted 13 April 2016

Published 24 May 2016

Corresponding author
Abhaya M. Dandekar,
amdandekar@ucdavis.edu

Academic editor
Abhishek Kumar

Additional Information and
Declarations can be found on
page 17

DOI 10.7717/peerj.2007

© Copyright
2016 Chakraborty et al.

Distributed under
Creative Commons CC-BY 4.0

OPEN ACCESS

Subjects Biochemistry, Bioinformatics, Genomics, Plant Science

Keywords Plant-pathogen interaction, Proteome, Secreted effectors, Plant defense, Functional enrichment

INTRODUCTION

Xylella fastidiosa (*X. fastidiosa*) is a xylem-limited pathogen associated with diseases in many economically important plants, including Pierce's Disease of grape (PD) and Citrus Variegated Chlorosis (CVC) (Chatterjee, Almeida & Lindow, 2008). *X. fastidiosa* lives within the host's water-conducting xylem vessels, where it forms biofilms believed to be responsible for reduced hydraulic conductance caused by clogging of the vessels, and not increased cavitation and embolism of xylem elements (McElrone, Sherald & Forseth, 2003).

The xylem is composed mainly of lignified vessels that are used for the transportation of water, mineral nutrients and metabolites throughout the vascular system, and in long-distance signaling in response to biotic and abiotic stresses (De Bernonville et al., 2014). Xylem sap contains small molecular weight inorganic compounds, organic substances (Metzner et al., 2010), amino acids and proteins (Biles & Abeles, 1991). Recent improvements in genomic and proteomic technologies are accelerating the characterization of these proteins. The xylem sap proteome has been characterized in different plants, which has been shown to contain several protein families such as metabolic enzymes, stress-related proteins and signal transduction proteins (Buhtz et al., 2004; Dafoe & Constabel, 2009; Djordjevic et al., 2007; Kehr, Buhtz & Giavalisco, 2005; Ligat et al., 2011; Rep et al., 2002; Zhang et al., 2015b). These include glycoside hydrolases, peroxidases, chitinases, lipid transfer proteins, proteases, lectins, pathogenesis-related proteins and cell wall structural proteins. The differential accumulation of proteins in xylem sap and apoplast fluid following pathogen infection has been investigated in some pathosystems, clearly indicating that protein composition changes during plant-pathogen interactions, both by the response of the host and by secreted effectors from the pathogen (Floerl et al., 2008; Gawehns et al., 2015; Houterman et al., 2007; Pu et al., 2016; Rep et al., 2002; Subramanian et al., 2009).

Vitis vinifera cv. Chardonnay xylem sap protein composition was previously analyzed by two-dimensional gel electrophoresis, which identified only ten proteins (Agüero et al., 2008). While the role played by xylem proteins in defense against biotic stress has been established in other plant species, the only information available about grapevine xylem sap proteins and their importance to plant response during *X. fastidiosa* pathogenesis came from the pioneering work and Yang and collaborators (2011) and a recent contribution by Katam et al. (2015). While the former showed that thaumatin-like and heat-shock proteins were significantly overexpressed in PD-resistant varieties of grape (Yang et al., 2011), the latter found several uniquely expressed proteins (β -1, 3-glucanases, 10-deacetyl baccatin III-10-O-acetyl transferase-like, COP9, and aspartyl protease nepenthesin precursor proteins) in PD-tolerant muscadine grape (Katam et al., 2015). The phenolic compounds altered during this plant-pathogen interaction has also been investigated (Wallis & Chen, 2012), expanding our understanding of the host molecular response to *X. fastidiosa* infection.

Moreover, the comparison of the xylem sap proteome of PD-tolerant and PD-susceptible grapevine species revealed the presence of few proteins that might be directly involved with plant defense against *X. fastidiosa* (Basha, Mazhar & Vasanthaiah, 2010). These studies however rely on protein sequence-based approaches for peptide mapping and identification (Altschul et al., 1997; Fenyo & Beavis, 2003), which limits exploring the wealth of information generated in proteomic analysis. Proteins with no sequence homology often possess similar enzymatic capabilities due to convergent evolution (Gherardini et al., 2007) and promiscuity (Chakraborty & Rao, 2012; Copley, 2003; Jensen, 1976); two well-studied phenomena analyzed by considering structural features. As structural data analysis can focus on several properties of target proteins rather than the one-dimensional alignments inherent to sequence-based methods, a structure-based data analysis approach is not well established for proteomics. We present a simple method for classifying protein sets using metrics derived from protein fold which can suggest putative functions to uncharacterized proteins by structural similarity. Our pipeline also performs a more localized perspective and analyzes specific active site residues to determine functional equivalence (Chakraborty et al., 2011; Kleywegt, 1999). This approach was applied here to better understand the molecular basis of the interaction between this xylem-colonizing bacterium and grapevines, on data generated by comparing the composition of the xylem sap proteome of infected plants with that of healthy plants. Our analysis pipeline (CHURNER) was able to confirm previous studies cited above and identify novel proteins not previously detected or yet uncharacterized, and is freely available to be used with other proteomic data sets.

MATERIALS & METHODS

Xylem sap collection and protein precipitation

Xylem sap was collected from six 3-year-old grapevines (*Vitis vinifera* cv. ‘Thompson Seedless’) located at the University of California Davis (Armstrong field). Three of these plants were mechanically inoculated with *Xylella fastidiosa* Temecula1 12 months prior to sap collection. The presence of *X. fastidiosa* in the xylem sap of infected plants was confirmed using anti-*X. fastidiosa* antibodies in a Double Antibody Sandwich ELISA (Agdia, USA) following manufacturer’s instructions (Fig. S1). Xylem sap (30–50 mL per plant) was collected overnight in the second week of spring by drip of the cut stem of *X. fastidiosa*-infected and non-infected plants. To initiate sap collection, an apical segment of approximately 10 cm was cut from the stem and the vine terminal introduced into a collection tube sealed with parafilm. Xylem sap was lyophilized followed by protein precipitation using TCA/Acetone (Gorg et al., 2000). The pellets were resuspended in 300 μ L of PBS (pH 7.4) and total protein was quantified using BCA Protein Assay Kit (Thermo Fisher Scientific) following manufacturer’s instructions for subsequent SDS-PAGE and LC-MS/MS analysis.

Protein preparation, mass spectrometry analysis and NMR imaging

Proteins were precipitated using ProteoExtractTM Protein Precipitation kit (Calbiochem) followed by dehydration overnight in a sterile fume hood. The protein pellet was then resuspended in 50 mM AmBic (pH 8.0) and 100 μ g subjected to an in-solution tryptic digestion. The digested peptides were analyzed using a QExactive mass spectrometer

(Thermo Fisher Scientific) coupled with an Easy-LC (Thermo Fisher Scientific) and a nanospray ionization source. One microgram of digested peptides were loaded onto a trap (100 micron, C18 100° A 5U) and desalted online before separation using a reverse phased column (75 micron, C18 200° A 3U). The gradient duration for separation of peptides was 60 min using 0.1% formic acid and 100% acetonitrile as solvents A and B, respectively. Raw data was analyzed using X!Tandem (Fenyo & Beavis, 2003) and visualized using Scaffold version 4.4.1 (Proteome Software, OR). Samples were searched against UniProt databases appended with the cRAP database, which recognizes common laboratory contaminants. Reverse decoy databases were also applied to the database prior to the X!Tandem searches. Peptide identifications were accepted if they could be established at greater than 95% probability by the Peptide Prophet algorithm (Keller et al., 2002; Nesvizhskii et al., 2003) with Scaffold delta-mass correction. Protein identifications were accepted if they could be established at greater than 99% probability and contained at least 2 identified peptides (see File S1 for raw data of identified proteins. All supplemental material is available at <http://dx.doi.org/10.5281/zenodo.50672>). Proteins that contained similar peptides and could not be differentiated based on MS/MS analysis alone were grouped to satisfy the principles of parsimony. For relative protein quantification of xylem sap from infected and non-infected plants, the QSpec statistical framework (Version 2, <https://sourceforge.net/projects/qprot/>) was used to assign significance to differentially regulated proteins, using a Bayes factor >10 (Choi, Fermin & Nesvizhskii, 2008).

Nuclear magnetic resonance imaging (¹H-MRI) was done in an Avance 400 spectrometer equipped with Bruker DRX console microimaging accessory according to Dandekar et al. (2012). Stem transverse sections of all non-infected and infected plants were collected between internodes located at the top (apical), middle and bottom of the central stem (three cuts per plant) and subjected to MRI. Fig. 2 shows representative results.

Downstream *In silico* methods

We have written custom programs to automate the extraction of protein sequences, their annotation through the BLAST command line (Camacho, 2008), obtaining homologous PDB structures, and getting pairwise structural homology (Konc & Janezic, 2010) from proteome data mined with Prophet/Scaffold program (Keller et al., 2002) (see example dataset in File S1). These programs were integrated in the CHURNER pipeline using freely available BioPerl (Stajich et al., 2002) modules and Emboss (Rice, Longden & Bleasby, 2000) tools (additional documentation and scripts available as Files S2 and S3). As manual steps, we performed gene ontology of the differentially expressed proteins using the statistical overrepresentation test from the PANTHER protein classification system (Mi et al., 2013), and FATCAT (Ye & Godzik, 2004) to supervise and validate the structural homology. All protein structures were rendered by the PyMol Molecular Graphics System, version 1.7.4 Schrödinger, LLC (<http://www.pymol.org/>). Detection of putative signal peptides and target sub-cellular locations of proteins were done with SignalP 3.0 (Bendtsen et al., 2004) and TargetP 1.1 (Emanuelsson et al., 2007), respectively. Protein sequences used in sequence and structural alignments were devoid of signal sequences to better represent mature proteins. Congruence of specific active site residues to determine functional equivalence

between proteins was performed with CLASP ([Chakraborty et al., 2011](#)). Adaptive Poisson–Boltzmann Solver (APBS) and PDB2PQR packages were used to calculate the electrostatic potentials of all the atoms in the protein ([Baker et al., 2001](#); [Dolinsky et al., 2004](#)). The APBS parameters were set as described previously in [Chakraborty et al. \(2011\)](#). APBS writes out the electrostatic potential in dimensionless units of kT/e where k is Boltzmann’s constant, T is the temperature in K and e is the charge of an electron, used to calculate the pairwise potential differences.

RESULTS & DISCUSSION

The CHURNER workflow for proteome analysis

CHURNER implements tandem analysis of sequence and structure of proteins to highlight potential functional similarities not obvious from simple sequence alignments. It uses simple Perl scripts to obtain the pairwise sequence and structural homology scores from BLAST and ProBiS, respectively ([Fig. 1](#)). The structural homology is then checked with FATCAT by the FCTSIG significance test ([Ye & Godzik, 2004](#)). We used these well established methods with different algorithms to detect structural similarity. This helps us corroborate the results between them (PZ scores). FATCAT treats the protein as flexible, allowing twists in the reference protein (akin to a real protein) and minimizes the number of rigid-body movements for the best structural alignment. ProBiS relies on common surface structural patches rather than global conservation in finding structural similarity, with the reasoning that the surface residues are more critical since they determine ligand or protein-protein interactions. The source code, working directory and a README script for the current example is available as [Supplemental Information](#) (see Methods). As a working example we used proteins identified by LC-MS/MS from xylem sap of grapevines infected with *X. fastidiosa* as described below. By using CHURNER we were able to highlight the Pathogenesis-Related proteins (PR-1) as the main proteins of grapevine defense against *X. fastidiosa* to be secreted in xylem sap and also to unravel structural similarity between β -D-glucan exo-hydrolase and chitinases, which has no known reference in existing literature. To the best of our knowledge, this is the first attempt to analyze proteomic data for differentially expressed proteins based on structural features. A walkthrough of the steps implemented by CHURNER will be demonstrated next.

Our working example: xylem sap proteins identification by LC-MS/MS

In this study, proteins from xylem sap of *X. fastidiosa*-infected and non-infected grapevines were lyophilized, precipitated by TCA/acetone and analyzed by SDS-PAGE ([Fig. S2](#)). A total of 91 proteins ([Table 1](#)) were identified herein by LC-MS/MS with at least two peptides sequenced per protein. SignalP and TargetP were used to predict the presence of signal peptides and sub-cellular localization, respectively, in all protein sequences. Signal peptides were found in 70 proteins (77%) of which 67 were predicted to be secreted while the others are directed towards an undetermined sub-cellular location.

Differentially expressed proteins in xylem sap of infected plants

Previous reports investigating differentially expressed transcripts and proteins in xylem sap of *X. fastidiosa*-infected plants have provided a wealth of information regarding the plant

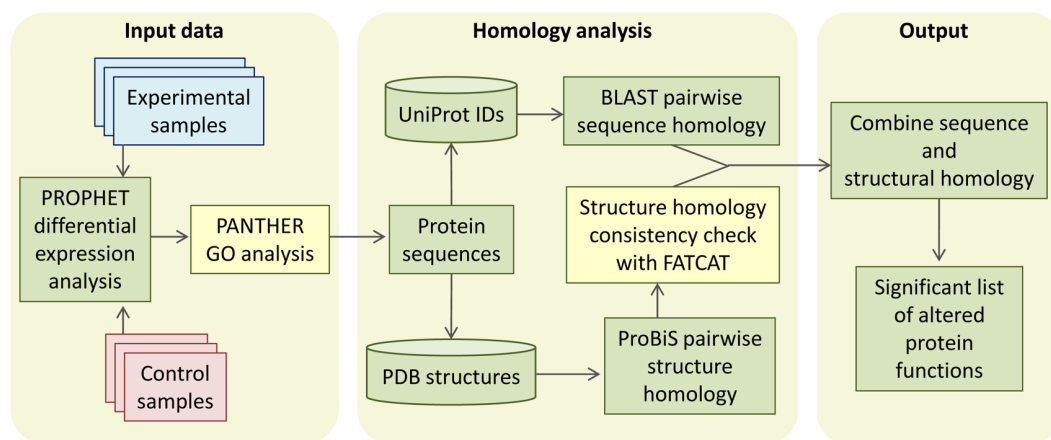


Figure 1 The CHURNER workflow. After differentially expressed proteins are selected and grouped by functional analysis, individual protein sequences are used to retrieve UniProt and PDB identifiers. All sequences and structures are compared pairwise, and significant structural alignments are then used to reinforce protein functions that are significantly altered in the experiment. Yellow boxes indicate manual steps.

responses to infection, both in grapevines (Katam et al., 2015; Lin et al., 2007; Yang et al., 2011) and citrus (Rodrigues et al., 2013). These include PR proteins, β -1, 3-glucanases, LRR-RLKs and chitinases listed in Table 1. From all proteins detected in xylem sap, those with significant fold changes as indicated by the Prophet/Scaffold program (See File S1 with protein quantification data and File S4 for multifasta protein sequences) were re-annotated using the BLAST command line interface (Camacho, 2008). Twelve of those for which a predicted structure could be assigned in the Protein Data Bank were further analyzed in the CHURNER pipeline (Table 2). Despite some UniProt IDs not having the proper functional annotation, as for example protein UID: F6HBN7, which is not annotated as a pathogenesis-related protein in <http://www.uniprot.org/uniprot/F6HBN7>, CHURNER uses UniProt IDs as protein identifiers, as it is easily streamlined with other applications such as the PANTHER gene ontology analysis server. The PANTHER overrepresentation test uses the most updated gene ontology database released, and has the option to use Bonferroni correction for multiple testing, which did not alter our results. It also has a wide range of reference genomes to be queried with the user list. Nine of twelve of our differentially expressed proteins could be mapped to ontology terms by PANTHER. The molecular functions with significant overrepresentation were chitinase and glycosyl hydrolase activities (GO:0004568, and GO:0016798, respectively. See complete GO analysis in File S5). Accordingly, the biological processes overrepresented were catabolism of glucosamines (GO:1901072), chitin (GO:0006032), amino glycans (GO:0006026) and amino sugars (GO:0046348). Interestingly, identification of differentially expressed proteins demonstrated that NtPRp27, which is found in the xylem exudate of non-infected grapevines (Agüero et al., 2008), and is a known pathogenesis-related protein (Okushima et al., 2000) was not over-expressed upon *X. fastidiosa* infection. Comparably, two LRR-RLK (Ciclev10004108m and Ciclev10014130m) found to be up-regulated in Ponkan

Table 1 Proteins identified in grapevine xylem sap of *Xylella fastidiosa*-infected and healthy plants by LC-MS/MS.^a

UniProt ID	Protein function	<i>Arabidopsis</i> best match		MW ^b	MP ^c	Cov. (%) ^d	SignalP	TargetP ^e
		ID	E-value					
Pathogenesis-related proteins								
D7TXF5	Pathogenesis-related 4	AT3G04720.1	9E-51	15	6	62	21 22	Sec
F6HVL6	Pathogenesis-related 4	AT3G04720.1	2E-59	20	2	14	21 22	Sec
F6HBN7	Basic pathogenesis-related 1	AT2G14580.1	1E-47	18	4	37	25 26	Sec
A5BNW5	Pathogenesis-related 1	AT2G14610.1	2E-53	17	2	23	19 20	Sec
A5AWT7	Pathogenesis-related thaumatin	AT1G20030.2	8E-83	45	5	17	26 27	Sec
A5AWT9	Osmotin 34	AT4G11650.1	1E-79	24	13	50	24 25	Sec
A5B4P9	Osmotin 34	AT4G11650.1	2E-82	24	6	47	24 25	Sec
Q9M4G7	Osmotin 34	AT4G11650.1	4E-72	20	5	42	–	–
Q9M4G6	Osmotin 34	AT4G11650.1	7E-83	24	7	45	24 25	Sec
A5B2B6	Osmotin 34	AT4G11650.1	8E-80	24	3	35	24 25	Sec
Proteases								
A5AZU5	Aspartyl protease	AT5G07030.1	1E-134	40	5	15	–	–
D7T5Q6	Aspartyl protease	AT4G35880.1	1E-82	33	2	17	–	–
F6H3K5	Aspartyl protease	AT5G10770.1	1E-116	46	3	9	–	–
F6H3K6	Aspartyl protease	AT5G10770.1	1E-152	51	4	11	25 26	Sec
E0CQB3	Subtilisin	AT1G20160.1	0E+00	79	19	36	–	–
F6HNS0	Subtilisin	AT5G59100.1	1E-157	69	9	24	–	–
F6H4J9	Subtilisin	AT5G67090.1	1E-157	79	2	3	–	–
F6HSV1	Subtilase	AT5G67360.1	0E+00	81	18	46	24 25	Sec
F6I357	Subtilase	AT1G01900.1	0E+00	81	18	38	20 21	Sec
A5B179	Subtilase	AT1G01900.1	1E-163	75	6	14	20 21	Sec
A5AIJ0	Serine carboxypeptidase 20	AT4G12910.1	0E+00	54	6	15	26 27	Sec
A5C816	Serine carboxypeptidase 51	AT2G27920.1	1E-163	51	4	16	21 22	Sec
Carbohydrate-active enzymes								
F6GZC4	Basic chitinase	AT3G12500.1	3E-89	35	15	68	21 22	Sec
Q9ZTK4	Basic chitinase	AT3G12500.1	2E-85	35	11	52	21 22	Sec
A5BK69	Chitinase A	AT5G24090.1	1E-109	32	12	48	25 26	Sec
F6H6H7	Chitinase A	AT5G24090.1	1E-108	32	9	37	25 26	Sec
F6HB09	Carrot EP3-3 chitinase	AT3G54420.1	1E-106	29	3	18	29 30	Sec
O24530	Carrot EP3-3 chitinase	AT3G54420.1	5E-90	27	2	16	20 21	Sec
F6HQS7	Alpha-L-arabinofuranosidase	AT3G10740.1	0E+00	84	20	26	28 29	Sec
F6HLL8	Beta-1, 3-glucanase 3	AT3G57240.1	1E-109	38	23	69	33 34	Sec
F6HLL9	Beta-1, 3-glucanase 3	AT3G57240.1	1E-110	37	4	22	32 33	Sec
A7PQW3	Beta-1, 3-glucanase 3	AT3G57240.1	3E-89	37	2	8	29 30	Sec
F6I6R4	Beta-D-xylosidase 4	AT5G64570.1	0E+00	83	23	42	33 34	Sec
D7TXW6	Alpha-galactosidase 2	AT5G08370.1	1E-169	45	11	31	24 25	Sec
F6HGW2	Beta galactosidase 1	AT3G13750.1	0E+00	92	2	2	24 25	Sec
D7SKW9	Beta-galactosidase 8	AT2G28470.2	0E+00	92	2	4	23 24	Sec
D7TPI6	Alpha-amylase-like	AT4G25000.1	1E-161	47	6	20	22 23	Sec

(continued on next page)

Table 1 (continued)

UniProt ID	Protein function	Arabidopsis best match		MW ^b	MP ^c	Cov. (%) ^d	SignalP	TargetP ^e
		ID	E-value					
A5C7G0	Glucuronidase 3	AT5G34940.2	0E+00	71	3	8	18 19	Sec
F6GU88	Glycosyl hydrolase	AT5G12950.1	0E+00	97	5	8	24 25	Sec
A5AZM8	Glycosyl hydrolase	AT2G27500.1	1E-132	50	2	5	–	–
F6H158	Glycosyl hydrolase	AT1G58370.1	0E+00	105	5	7	–	–
D7SVH6	Glycosyl hydrolase	AT3G26720.1	0E+00	114	2	3	19 20	Sec
D7TQ09	O-Glycosyl hydrolases	AT4G34480.1	1E-171	52	5	11	24 25	Sec
E0CQB9	O-Glycosyl hydrolases	AT4G34480.1	1E-178	50	3	12	22 23	Sec
D7T828	O-Glycosyl hydrolases	AT5G55180.1	0E+00	50	4	17	20 21	Sec
F6HCL5	Glycosyl hydrolases	AT4G19810.1	1E-107	40	5	24	25 26	Sec
D7T548	Glycosyl hydrolases	AT4G19810.1	1E-118	40	5	21	25 26	Sec
A7PZL3	Pectin lyase-like	AT3G61490.3	0E+00	53	2	10	–	–
F6HUM8	Pectin lyase-like	AT3G61490.3	0E+00	52	7	24	–	–
A5AZD0	Callose-binding protein 3	AT1G18650.1	3E-35	20	3	20	19 20	Sec
D7SI17	Callose-binding protein 3	AT1G18650.1	3E-39	21	2	20	19 20	Sec
A5C594	Expansin-like	AT4G17030.1	2E-40	23	6	42	24 25	Sec
Receptor-like kinases (RLKs)								
F6HIL5	Receptor-like kinase-related	AT3G22060.1	8E-69	27	16	64	24 25	Sec
A5AID0	Receptor-like kinase-related	AT5G48540.1	2E-74	45	3	11	25 26	Sec
D7TPF3	Leucine-rich repeat (LRR) SHV3-like 2	AT4G06744.1	1E-108	49	2	4	28 29	–
Peroxidases								
F6GUF3	Peroxidase 2	AT5G06720.1	1E-109	36	2	7	23 24	Sec
F6GUE9	Peroxidase	AT5G19890.1	1E-104	29	15	65	–	–
F6HD61	Peroxidase	AT1G49570.1	1E-110	36	11	35	25 26	Sec
A5BJV9	Peroxidase	AT5G58390.1	3E-77	28	9	49	–	–
F6H776	Peroxidase	AT1G05260.1	8E-77	74	11	23	21 22	Sec
F6HIK4	Peroxidase	AT1G05260.1	1E-135	76	2	3	26 27	Sec
D7TQI6	Peroxidase	AT2G37130.1	1E-137	37	7	29	–	–
F6H3X3	Peroxidase	AT5G14130.1	8E-98	34	5	22	34 35	–
D7SVP1	Peroxidase	AT5G14130.1	2E-20	10	2	43	–	–
F6GXY7	Peroxidase	AT5G05340.1	7E-96	28	2	13	–	–
D7SR21	Peroxidase	AT5G05340.1	3E-98	28	3	19	–	–
F6H0Z1	Peroxidase	AT5G05340.1	1E-113	34	2	13	22 23	Sec
A5B8V0	Peroxidase	AT2G41480.1	6E-91	30	2	12	–	–
F6HH88	Peroxidase	AT2G41480.1	1E-120	70	2	7	24 25	Sec
F6HSU5	Peroxidase	AT5G67400.1	1E-138	36	3	17	27 28	Sec
Others								
E0CQL6	Basic blue protein-like	AT2G02850.1	8E-38	19	8	49	–	–
D7TML8	Inhibitor/LTP/seed storage	AT3G53980.2	2E-33	12	11	67	27 28	Sec
D7SLG6	Inhibitor/LTP/seed storage	AT2G44290.1	1E-35	19	3	26	–	–
F6H7X9	Inhibitor/LTP/seed storage	AT4G33550.2	1E-07	12	3	39	29 30	Sec
A5C9S3	Inhibitor/LTP/seed storage	AT4G33550.2	4E-05	12	2	25	21 22	Sec

(continued on next page)

Table 1 (continued)

UniProt ID	Protein function	Arabidopsis best match		MW ^b	MP ^c	Cov. (%) ^d	SignalP	TargetP ^e
		ID	E-value					
F6I0G4	Pectin methylesterase inhibitor	AT5G09760.1	0E+00	61	16	33	21 22	Sec
A5BS35	Basic seretory protein	AT2G15220.1	1E-83	25	10	53	23 24	Sec
F6HS61	Glycine-rich protein	AT4G30460.1	7E-03	13	7	67	22 23	Sec
A5AIZ1	Glycine-rich protein	AT4G30460.1	3E-03	13	4	67	22 23	Sec
D7TY88	Protease inhibitor	AT1G17860.1	6E-58	23	5	23	27 28	Sec
D7T293	Cupredoxin	AT4G12420.2	0E+00	66	2	5	23 24	Sec
A5BMY7	Cupredoxin	AT1G72230.1	7E-23	19	2	18	22 23	Sec
D7UBD5	Cupredoxin	AT3G27200.1	4E-40	18	4	41	23 24	Sec
A5BZS1	FAD-binding Berberine	AT4G20840.1	1E-179	59	5	10	30 31	Sec
A5B2E1	Cystatin/Monellin	AT5G47550.1	2E-29	13	2	15	24 25	Sec
A5BH21	PLC-like phosphodiesterase	AT1G66970.1	0E+00	70	3	5	21 22	Sec
D7SVW5	PI-PLC-like	AT4G36945.1	1E-143	45	2	9	27 28	Sec
A5BB66	Fasciclin-like	AT3G60900.1	1E-117	43	3	15	20 21	-
A5B7N6	Fasciclin-like	AT4G12730.1	1E-115	44	2	8	26 27	Sec
D7SXH0	Lamin-like	AT5G15350.1	3E-37	18	2	15	-	-
A5AIY9	Unknown protein	-	-	15	4	59	23 24	Sec

Notes.

^aA total of 91 proteins with at least two peptides sequenced per protein were identified and are displayed grouped by functional category.

^bPredicted molecular weight of proteins, in kDa.

^cMatched peptides.

^dPercentage of coverage.

^eTargetP output: Sec, secreted protein; -, undefined.

mandarin infected with *X. fastidiosa* (Rodrigues et al., 2013), were not affected in our data, despite LRR-RLKs being detected in our proteomic analysis (Table 1). Plant receptor-like kinases (RLKs) are a large gene family (~600 members in *Arabidopsis*) (Shiu & Blecker, 2001), consisting of an accelerated evolutionary domain implicated in signal reception through leucine-rich repeat (LRRs) (Afzal, Wood & Lightfoot, 2008). Resistance (R) genes have evolved to counter pathogens that bypass the pathogen-associated molecular patterns (PAMP) mechanism in plants (Nicaise, Roux & Zipfel, 2009). Most R genes encode proteins comprising of a nucleotide-binding site (NBS) and leucine-rich repeats (LRRs), and recognize and neutralize specialized pathogen avirulence (Avr) proteins, providing plants with resistance (Borhan et al., 2004; Chakraborty et al., 2016; Ernst et al., 2002; Hayashi et al., 2010; Zhang et al., 2010).

Up-regulated proteins

The up-regulated protein F6HLL8 listed in Table 2 is a β -1, 3-glucanase (GNS), a well-established pathogenesis related protein (Balasubramanian et al., 2012; Shinshi et al., 1988). GNS has strong anti-microbial (Xie et al., 2015) and anti-fungal activity (Su et al., 2013). Expectedly, it is a target of pathogen toxins in the ensuing evolutionary battle (Sanchez-Rangel, Sanchez-Nieto & Plasencia, 2012; Zhang et al., 2015b). GNS, along with chitinase, has been shown to inhibit fungal growth (Mauch, Mauch-Mani & Boller, 1988; Sela-Buurlage et al., 1993). The presence of two up-regulated chitinases (UIDs: A5BK69,

Table 2 Differentially expressed proteins and their sequence and structural similarities with reference proteins.

UniProt ID	Protein function	GenBank / protein data base			Expression ^a
		ID	Score	E-value	
F6HLL8	β -1-3 glucanase	NP_001268153.1 / 4HPG	696 / 423	0e+00 / 1e-147	Up
A5BK69	Class III chitinase	ACH54087.1 / 1HVQ	592 / 435	0e+00 / 1e-153	Up
D7T548	Chitotriosidase-1	XP_002270368.1 / 3AQU	743 / 452	0e+00 / 5e-158	Up
F6HBN7	Pathogenesis-related	XP_002274275.1 / 1CFE	334 / 184	1e-114 / 3e-59	Up
A5BNW5	Pathogenesis-related	XP_002273788.2 / 1CFE	333 / 186	7e-114 / 4e-60	Up
D7TML8	Lipid-transfer protein	XP_002281554.1 / 2RKN	239 / 36.2	9e-79 / 7e-04	Up
A5C594	Expansin-like	XP_002270175.2 / 2HCZ	374 / 89	2e-128 / 5e-21	Up
E0CQL6	Blue copper protein-like	XP_002266573.1 / 2CBP	268 / 158	4e-89 / 3e-49	Up
F6GZC4	Chitinase	CAC14015.1 / 4DWX	660 / 385	0e+00 / 7e-134	Down
A5AWT7	Thaumatococcus-like 1b	XP_002274137.1 / 3ZS3	518 / 253	1e-180 / 3e-81	Down
F6I6R4	β -xylosidase	XP_002264183.2 / 1EX1	1605 / 154	0e+00 / 2e-39	Down
D7SLG6	YLS3-like, Lipid-transfer protein	XP_002285691.1 / 1FK0	355 / 33.9	3e-122 / 1.7e-02	Down

Notes.

^aVariation of protein level detected in sap from infected grapevine compared to uninfected control.

D7T548) induced by *X. fastidiosa* demonstrates that this defense response is similar during both bacterial and fungal attack. Both these chitinases belong to the GH18 sub-family of chitinases (*Funkhouser & Aronson Jr, 2007*). Another up-regulated protein is an expansin-like B1 enzyme (UID: A5C594), also a carbohydrate-binding protein involved in cell-wall loosening and restructuring (*Zhang et al., 2014*). Homologs have previously been link to abiotic stress responses (*Han et al., 2014; Nanjo, Nakamura & Komatsu, 2013*). Two other proteins (UID: F6HBN7, A5BNW5) are the well-established defense PR-1 pathogenesis related proteins (*Sudisha et al., 2012*). Several functions have previously been attributed to PR1 including, antiviral activity in tobacco (*Antoniw & White, 1980*) and anti-herbivory activity in maize (*Zhang et al., 2015a*). Additional activities suggest protease-mediated programmed cell death pathways in plants (*Lu et al., 2013*), a symptom commonly seen in leaves of Pierce's diseased grapevines. A lipid-transfer protein of the DIR1 type (UID: D7TML8) also ranks among the up-regulated proteins, suggesting a systemic defense response being activated, as previously seen in *Arabidopsis* (*Champigny et al., 2013*). A blue copper protein-like was also identified as up-regulated. This redox protein family is part of a widespread but yet poorly characterized defense mechanism in plants and/or lignin formation (*Cao et al., 2015; Nersissian et al., 1998*). It is interesting to note an abundance of cell-wall modification enzymes in xylem sap from infected plants, as this corroborates previous observations in other pathosystems such as *Xanthomonas oryzae* infection of rice (*Hilaire et al., 2001*), among others (*Van Loon, Rep & Pieterse, 2006*). Since vines infected with *X. fastidiosa* commonly display an increase in stem diameter, we verified if this reflected in an increase of secondary wall deposition by nuclear magnetic resonance imaging (*Fig. 2*). Indeed the MRI showed an increase in dense material (colored in light shades in *Fig. 2*) in infected plant stems, including those used for xylem sap collection. Recently it has also

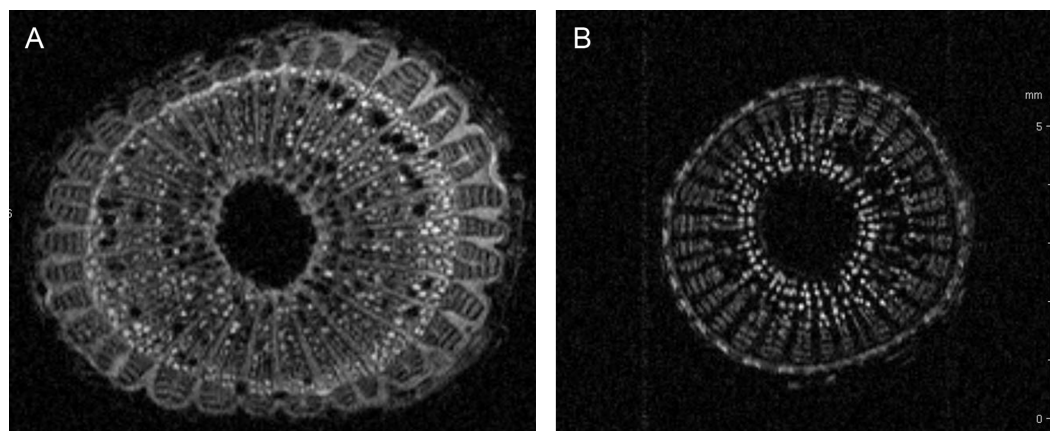


Figure 2 Cell wall thickening of infected grapevines. Magnetic resonance imaging (1H-MRI) of stems of *Xylella fastidiosa* (A) infected and (B) non-infected grapevines. Note the brighter contrast (denser material) of secondary xylem and phloem vessels on the infected vine. Both images have the same magnification and scale bar is 5 mm. Images representative of transversal stem cuts obtained near 10 cm from top central stem. Similar thickening of cell walls were also observed in transversal cuts obtained along the vine until the base near the soil.

been demonstrated that citrus infected with *X. fastidiosa* display a thickening of secondary cell-walls (Niza *et al.*, 2015).

Down-regulated proteins

As mentioned previously the GH19 sub-family chitinase (UID: F6GZC4) is down-regulated. A similar suppression of a chitinase gene in response to mycorrhizal fungus *Glomus intraradices* infection of tobacco roots has been noted previously (David *et al.*, 1998). The GH19 sub-family has members that are sugar-binding proteins but without catalytic activity (Martinez-Caballero *et al.*, 2014). Further experimentation is necessary to verify whether this is the case in *Vitis vinifera*, as it can be part of the cell-wall remodeling in response to the pathogen, as previously suggested by other works (Lin *et al.*, 2007; Rodrigues *et al.*, 2013). A thaumatin-like protein (TLP) (UID: A5AWT7) is also found to be down-regulated upon *X. fastidiosa* infection. TLP's are found in most eukaryotes, and involved in host defense and several developmental processes (Liu, Sturrock & Ekramoddoullah, 2010). While TLP over expression has been shown to enhance resistance to *Alternaria alternata* in tobacco (Safavi, Zareie & Tabatabaei, 2012), these proteins can also be down-regulated in some cases, as shown in the compilation of transcriptomes of poplar leaf rust infections (Petre *et al.*, 2011). A β -D-xilosidase 4 ortholog (UID: F6I6R4) was also down-regulated in infected vines, again reinforcing the drastic effect on cell-wall remodeling enzymes upon pathogen infection. The other down-regulated protein in Table 2 is a LTP similar to YLS3 (yellow-leaf-specific) which is a marker of leaf senescence, being induced in earlier stages and repressed in later stages in *Arabidopsis* (Yoshida *et al.*, 2001).

Sequence homology

Although in our data set only twelve proteins were selected for further analysis through CHURNER, there might be cases when larger data sets render a manual inspection of

Table 3 Pairwise BLAST^a results of example proteins analyzed with CHURNER.

UID ^b #1	UID #2	Identity ^c	E-value	Protein function
F6HBN7	A5BNW5	120/136	8e−90	Pathogenesis-related proteins (PR-1)
D7TML8	D7SLG6	20/78	9e−08	Lipid transfer proteins
A5BK69	A5C594	30/181	1.6e−2	Chitinase or expansin (?)
F6HBN7	A5BK69	16/133	2.4	PR-1 or Chitinase (?)
A5BK69	D7T548	36/272	2e−3	Chitinases GH18

Notes.^aSequences aligned with bl2seq from NCBI.^bUniProt identifier.^cTotal number of identical amino acid residues considering the best alignment between the two proteins.

homologous proteins difficult. Even in the current case, it is difficult to identify D7SLG6 as a lipid transfer protein (LTP) from the BLAST automated annotation (Table 2, value marked in italic). Thus, as the next step in CHURNER, we implemented a pairwise BLAST of all mature proteins (devoid of signal sequences). Table 3 shows the pairwise sequence homology with an *E*-value cutoff of 0.005. There are several interesting aspects that emerge from this comparison. As expected, the two PR-1 proteins are found to be significantly homologous. The ‘YLS3-like’ protein (UID: D7SLG6) is found to be quite similar to another LTP (UID: D7TML8). Furthermore, we observe sequence homology between chitinases and expansin (*E*-value = 4e−04), and much less between chitinases and PR-1 proteins (*E*-value = 0.002). Interestingly, these similarities are greater than that between the two known chitinases from sub-family GH18 (*E*-value = 0.003). This raises the interesting question whether these proteins (chitinases/expansin/PR-1) have promiscuous functions (Chakraborty & Rao, 2012; Khersonsky & Tawfik, 2010), and underlines the problem of depending only on annotation of individual protein sequences, thus providing a more rational alternative to identify proteins with similar functions. Since the structure of a protein is intrinsically related to its function, we implemented structural annotation as the next step in CHURNER.

Structural annotation

CHURNER implements an automated search for homologous proteins with known PDB structures (Table 2). As expected, proteins with high similarity and alignment at the sequence level map to the same PDB structure, such as the PR-1 proteins (PDBid: 1CFE, PR-14a protein). Interestingly, this protein was identified as a possible replacement of the human neutrophil elastase component of the chimeric protein (Chakraborty, 2012; Chakraborty et al., 2013) that provided enhanced grapevine resistance to *X. fastidiosa* (Dandekar et al., 2012). Moreover, apart from the LTP (UID: D7SLG6, *E*-value = 0.017), all matches are very significant to their PDB closest model.

Structural homology

Using the structures corresponding to the identified proteins, we detected similarities that might have escaped detection in the sequence homology search. Table 4 shows the most significant pairwise structural comparison of the structures (excluding the PR-1

Table 4 Pairwise superimposition of the PDB structures using ProBiS.

PDBid/UID ^a #1	PDBid/UID #2	PZ ^b	Protein function	FCTSIG
2RKN/D7TML8	1FK0/D7SLG6	2.4	Lipid transfer proteins	Yes
1HVQ/A5BK69	3AQU/D7T548	2	Chitinases GH18	Yes
3AQU/D7T548	1EX1/F6I6R4	1.6	Chitinase and β -D-glucan exohydrolase	Yes
1HVQ/A5BK69	1EX1/F6I6R4	1.3	Chitinase and β -D-glucan exohydrolase	No

Notes.

^aUID: UniProt identifier.

^bThe results are sorted based on the ProBiS ZScore (PZ). Significance of structural alignment was verified using FATCAT (FCTSIG). Although the two chitinases have no sequence homology, their structural features are conserved. Similarly, we see significant structural similarity between a chitinase (UID: D7T548) and a β -D-Glucan Exohydrolase (UID: F6I6R4).

proteins which have the same PDB structure) computed using ProBiS (Konc & Janezic, 2010). We subsequently verified the alignment significance using the FATCAT server (Ye & Godzik, 2004). The ProBiS Z-score (PZ in Table 4) are standardized alignment scores (Konc & Janezic, 2010) which provide statistical and structural significance of local structural alignments. Z-scores >2 are considered highly significant (PDBs: 2RKN/1FK0 and 1HVQ/3AQU), although a Z-score of 1.6 is also significant (PDBs: 3AQU/1EX1), as confirmed by FATCAT (which looks at the global structure). The LTPs (with a sequence homology E -value = $1e-06$) are structurally homologous, as expected (Fig. 3A). Noteworthy, the chitinases from the GH18 family with a low sequence homology (E -value = 0.003) are structurally homologous (Fig. 3B). Finally, in spite of a much lower sequence homology (E -value = 0.44), the chitinase (UID: D7T548) and the β -D-glucan exohydrolase (UID: F6I6R4) are structurally homologous (Fig. 3C). These observations highlight the necessity of structural comparison in annotating and grouping proteins based on functionality in proteomic analysis, and points to alternative protein functions that can be tested in subsequent studies.

Environmental stimuli (Yang et al., 2012), pathogens (Moy et al., 2004) or disease (Ng et al., 2009) induce differential expression of specific genes. Rapid technological advances have helped us identify these genes, and define their roles in defense or pathogenesis. While quantifying transcripts through high-throughput sequencing techniques have revolutionized these efforts (Wang, Gerstein & Snyder, 2009), the correlation between transcriptional and protein abundance remains suspect (Gygi et al., 1999) due to the complexity of the regulatory factors modulating translation (Zhu et al., 2012). Thus, identifying proteins through techniques like mass spectrometry (Witzel et al., 2009), and measuring their relative amounts (Hu, Rampitsch & Bykova, 2015), provides a true picture of the genes involved in pathogenesis and defense response, rather than measuring their RNA abundance (Moy et al., 2004). Nevertheless, the value of transcriptomic analysis should not be underestimated as it has proved to be an effective approach to discover genes responsive to infection, as exemplified by sequencing of expressed sequence tags from *X. fastidiosa*-infected grapevines (Lin et al., 2007) and citrus (Rodrigues et al., 2013).

Here we showed that several proteins (pathogenesis-related PR-1, chitinases and β -1, 3-glucanases) are differentially expressed in the xylem sap of grapevine infected with *X. fastidiosa*, using LC-MS/MS with at least two peptides sequenced per protein, confirming

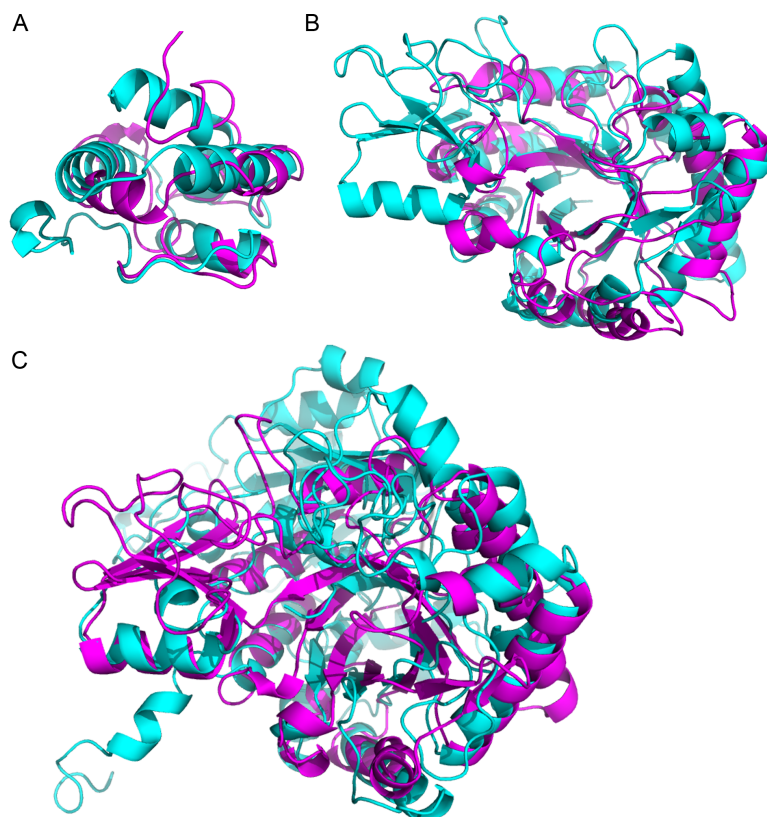


Figure 3 Superimposition of proteins that have significant structural homology. Structural homology has been detected using ProBiS, and confirmed using FATCAT. (A) Lipid transfer proteins: PDBid: 2RKNA (in magenta) and PDBid: 1FK0A (in cyan). (B) Chitinase GH18 proteins: PDBid: 1HVQA (in magenta) and PDBid: 3AQUA (in cyan). Note, that these proteins have low sequence homology (BLAST E -value = 0.003). (C) Chitinase (PDBid: 3AQUA, in magenta) and β -D-Glucan Exohydrolase (PDBid: 1EX1A, in cyan). These proteins have low sequence homology (E -value = 0.44).

findings of previous investigations. These proteins are recognized as key players in the plant response against pathogen infection, as exemplified by sugarcane infected by *Sporisorium scitamineum* (Su et al., 2013) and other pathosystems reviewed in (Sudisha et al., 2012). Interestingly, we observed that there are two chitinases which are regulated differently (UniProt IDs F6GZC4 and D7T548, Table 4). Chitinases degrade chitin, a component of fungal cell walls (David et al., 1998). This observation diminishes the importance of chitinase as a generic defense agent against *X. fastidiosa*. It is also possible that the plant response to the infecting bacterial agent is indifferent to the expression levels of these anti-fungal chitinases, for which we warrant further studies. The pathogenic state can also be characterized by differentially expressed genes within *X. fastidiosa* itself (Shi et al., 2010). Consequently, the analysis of differentially expressed genes and proteins should consider functionally related proteins as a single entity, and not just the expression levels of single genes or proteins. CHURNER allows for such selection based on both sequence and structural homology, as often, the best match for a sequence has an incomplete annotation. Subsequently, structural homology can identify functional relationship among

Table 5 Potential and spatial congruence of the active site residues in proteins chitinase and β -D-glucan exohydrolase detected using CLASP.

PDB*	Active site atoms (a, b, c)		ab	ac	bc
1EX1A	ASP285 OD1, GLU491 OE1, TRP286 CZ2	D	6.4	8.4	9.3
		PD	-24.1	-273.2	-249.1
3AQU	GLU116 OE1, ASP114 OD1, TRP324 CZ2	D	7.1	7.9	9.5
		PD	49.8	-296.8	-346.7

Notes.

*Chitinase: 1EX1A, β -D-glucan exohydrolase: 3AQU. The ability of CLASP to select stereo-chemically equivalent residues (Asp and Glu, both negatively charged residues) is critical to find the homologous active site. D, Pairwise distance in Å. PD, Pairwise potential difference. See Methods section for units of potential.

sequences with little sequence homology. For example, the two chitinase homologs have low pairwise sequence homology (E -value = 0.003). However, their significant homologous counterparts in the PDB database are PDBid: 4DWXA (*Secale cereale*, rye) and PDBid: 3AQU (*Arabidopsis thaliana*) have significant structural homology, as computed using ProBiS (Konc & Janezic, 2010) and FATCAT (Ye & Godzik, 2004).

Corroborating the promiscuity of the chitinase and β -D-glucan exohydrolase by active site structural homology

The β -D-glucan exohydrolase (PDBid: 1EX1) is critical for hydrolysis of cell walls, containing high levels of 1, 3- β -D-glucans, during wall degradation in germinated grain and during wall loosening in elongating coleoptiles (Varghese, Hrmova & Fincher, 1999). Interestingly, the fungal wall is composed of chitin, 1, 3- β - and 1, 6- β -glucan, mannan and proteins (Adams, 2004). Thus, the up-regulation of both chitinases and β -D-glucan exohydrolases is possibly an anti-fungal defense response that has been triggered by *X. fastidiosa*. We have seen that the chitinase and the β -D-glucan exohydrolase have no sequence homology (Table 3), but partial structural homology (Table 4). A detailed analysis of their catalytic residues further strengthens credence of their functional similarity. For β -D-glucan exohydrolase, Asp285 and Glu491 are involved in catalysis (Varghese, Hrmova & Fincher, 1999). In chitinases, the Asp114 and Glu116 are a part of the conserved motif (DXXDXDXE) (Hamid et al., 2013). The active site residues of these proteins demonstrate significant spatial (Fig. 4) and electrostatic congruence (Table 5) determined using CLASP. The absence of sequence linearity indicates that this homology arose from convergent evolution. Remarkably, based on the catalytic triad of the barley β -D-glucan exohydrolase (PDBid: 1EX1A) provided to CLASP, it was able to pick up the catalytic triad from the *Arabidopsis* chitinase (PDBid: 3AQU) despite the lack of sequence homology. We later realized this prediction was correct consulting the work from Ohnuma and collaborators (2011) on the crystallographic studies of this type V chitinase.

CONCLUSIONS

A robust proteomic methodology was used to identify novel protein fragments in addition to the proteins identified previously using two-dimensional gel electrophoresis followed by sequencing of protein spots in non-infected xylem exudates collected from *Vitis*

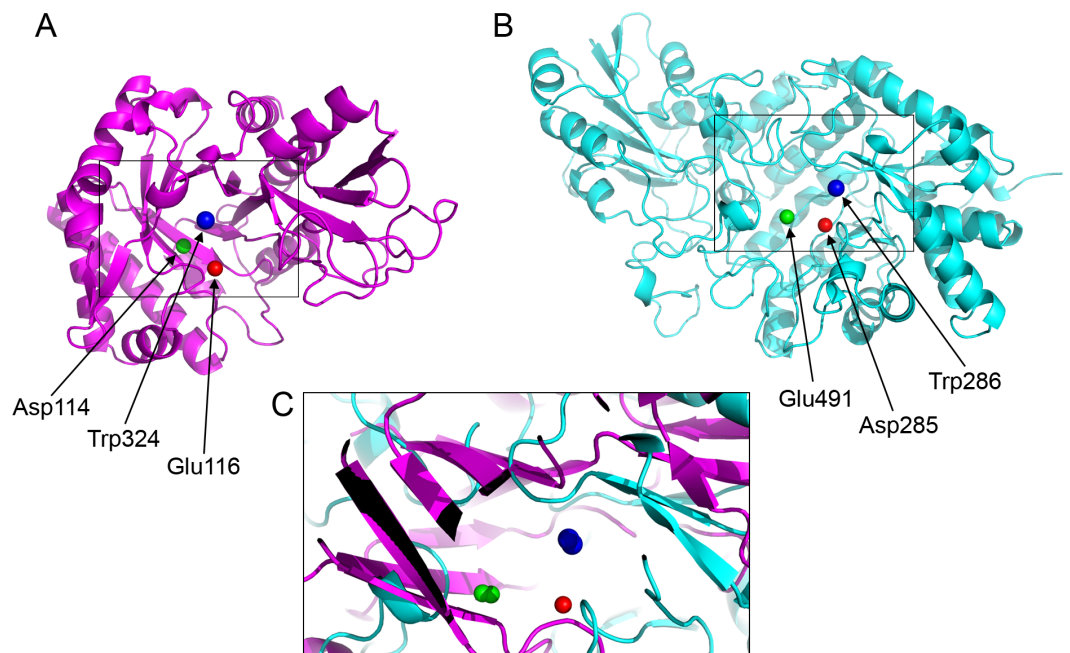


Figure 4 Active site residues in the chitinase and β -D-glucan exohydrolase. (A) Glu116 (red), Asp114 (green), Trp324 (blue) in chitinase (PDBid:3AQU). (B) Asp285 (red), Glu491 (green), Trp286 (blue) in β -D-glucan exohydrolase (PDBid:1EX1A). (C) Superimposition of the chitinase (in magenta) and β -D-glucan exohydrolase (in cyan).

vinifera cv. Chardonnay vines (Agüero *et al.*, 2008), and mass spectrometric analysis of *X. fastidiosa*-infected grapevines (Katam *et al.*, 2015; Yang *et al.*, 2011). Thus, here we link the expression pattern of well-studied proteins in grapevines to the pathogen perception response, and present a methodology for assessing their significance by taking into account both their sequence and structural information. Although our data came from a single round of infection containing three plants (and three non-infected control plants), our findings are consistent among the different samples and to previous proteomic studies of *X. fastidiosa* infected grapevines. In conclusion, CHURNER enhances our ability to find functionally-relevant protein candidates that have little or no sequence similarity, and thus would be considered as separate components of a data set. The name “CHURNER” was inspired in the mixing tool used to reach the “cream.” We intend to offer a tool to enable for detection of “cream” protein functions, not obvious from simple amino acid sequence alignments. The reduced data set employed in this work was used as a proof of concept, and we encourage readers to use complex data sets with thousands of proteins to find many putative functional relations among proteins that are yet unexplored.

ACKNOWLEDGEMENTS

We thank James Mitch Elmore for helpful suggestions in proteomic analysis.

ADDITIONAL INFORMATION AND DECLARATIONS

Funding

AMD received grant support from the California Department of Food and Agriculture PD/GWSS Board. BJR received financial support from Tata Institute of Fundamental Research (Department of Atomic Energy). Additionally, BJR received the JC Bose Award Grant from the Department of Science and Technology. RN, LRG, and PAZ received funding from the Brazilian Ministry of Science (CNPq) and Education (CAPES). The funders had no role in study design, data collection and analysis, decision to publish, or preparation of the manuscript.

Grant Disclosures

The following grant information was disclosed by the authors:
California Department of Food and Agriculture PD/GWSS Board.
Tata Institute of Fundamental Research (Department of Atomic Energy).
JC Bose Award Grant from the Department of Science and Technology.
Brazilian Ministry of Science (CNPq) and Education (CAPES).

Competing Interests

The authors declare there are no competing interests.

Author Contributions

- Sandeep Chakraborty conceived and designed the experiments, performed the experiments, analyzed the data, wrote the paper, prepared figures and/or tables, reviewed drafts of the paper.
- Rafael Nascimento and Hossein Gouran performed the experiments, analyzed the data, wrote the paper, prepared figures and/or tables, reviewed drafts of the paper.
- Paulo A. Zaini analyzed the data, wrote the paper, prepared figures and/or tables, reviewed drafts of the paper.
- Basuthkar J. Rao and Luiz R. Goulart contributed reagents/materials/analysis tools, reviewed drafts of the paper.
- Abhaya M. Dandekar conceived and designed the experiments, analyzed the data, contributed reagents/materials/analysis tools, wrote the paper, reviewed drafts of the paper.

Data Availability

The following information was supplied regarding data availability:

Data can be found at Zenodo: <http://dx.doi.org/10.5281/zenodo.50672>.

Supplemental Information

Supplemental information for this article can be found online at <http://dx.doi.org/10.7717/peerj.2007#supplemental-information>.

REFERENCES

- Adams DJ. 2004. Fungal cell wall chitinases and glucanases. *Microbiology* **150**:2029–2035 DOI [10.1099/mic.0.26980-0](https://doi.org/10.1099/mic.0.26980-0).
- Afzal AJ, Wood AJ, Lightfoot DA. 2008. Plant receptor-like serine threonine kinases: roles in signaling and plant defense. *Molecular Plant-Microbe Interactions* **21**:507–517 DOI [10.1094/MPMI-21-5-0507](https://doi.org/10.1094/MPMI-21-5-0507).
- Agüero CB, Thorne ET, Ibáñez AM, Gubler WD, Dandekar AM. 2008. Xylem sap proteins from *Vitis vinifera* L. Chardonnay. *American Journal of Enology and Viticulture* **59**:306–311.
- Altschul SF, Madden TL, Schaffer AA, Zhang J, Zhang Z, Miller W, Lipman DJ. 1997. Gapped BLAST and PSI-BLAST: a new generation of protein database search programs. *Nucleic Acids Research* **25**:3389–3402 DOI [10.1093/nar/25.17.3389](https://doi.org/10.1093/nar/25.17.3389).
- Antoniw JF, White RF. 1980. The effects of aspirin and polyacrylic acid on soluble leaf proteins and resistance to virus infection in five cultivars of tobacco. *Journal of Phytopathology* **98**:331–341 DOI [10.1111/j.1439-0434.1980.tb03748.x](https://doi.org/10.1111/j.1439-0434.1980.tb03748.x).
- Baker NA, Sept D, Joseph S, Holst MJ, McCammon JA. 2001. Electrostatics of nanosystems: application to microtubules and the ribosome. *Proceedings of the National Academy of Sciences of the United States of America* **98**:10037–10041 DOI [10.1073/pnas.181342398](https://doi.org/10.1073/pnas.181342398).
- Balasubramanian V, Vashisht D, Cletus J, Sakthivel N. 2012. Plant beta-1, 3-glucanases: their biological functions and transgenic expression against phytopathogenic fungi. *Biotechnology Letters* **34**:1983–1990 DOI [10.1007/s10529-012-1012-6](https://doi.org/10.1007/s10529-012-1012-6).
- Basha SM, Mazhar H, Vasanthaiah HK. 2010. Proteomics approach to identify unique xylem sap proteins in Pierce's disease-tolerant *Vitis* species. *Applied Biochemistry and Biotechnology* **160**:932–944 DOI [10.1007/s12010-009-8620-1](https://doi.org/10.1007/s12010-009-8620-1).
- Bendtsen JD, Nielsen H, Von Heijne G, Brunak S. 2004. Improved prediction of signal peptides: SignalP 3.0. *Journal of Molecular Biology* **340**:783–795 DOI [10.1016/j.jmb.2004.05.028](https://doi.org/10.1016/j.jmb.2004.05.028).
- Biles CL, Abeles FB. 1991. Xylem sap proteins. *Plant Physiology* **96**:597–601 DOI [10.1104/pp.96.2.597](https://doi.org/10.1104/pp.96.2.597).
- Borhan MH, Holub EB, Beynon JL, Rozwadowski K, Rimmer SR. 2004. The *Arabidopsis* TIR-NB-LRR gene RAC1 confers resistance to *Albugo candida* (white rust) and is dependent on EDS1 but not PAD4. *Molecular Plant-Microbe Interactions* **17**:711–719 DOI [10.1094/MPMI.2004.17.7.711](https://doi.org/10.1094/MPMI.2004.17.7.711).
- Buhtz A, Kolasa A, Arlt K, Walz C, Kehr J. 2004. Xylem sap protein composition is conserved among different plant species. *Planta* **219**(4):610–618.
- Camacho C. 2008. *BLAST® Command Line Applications User Manual*. Bethesda: National Center for Biotechnology Information. Available at <http://www.ncbi.nlm.nih.gov/books/NBK279690/>.
- Cao J, Li X, Lv Y, Ding L. 2015. Comparative analysis of the phytoeyanin gene family in 10 plant species: a focus on *Zea mays*. *Frontiers in Plant Science* **6**:515 DOI [10.3389/fpls.2015.00515](https://doi.org/10.3389/fpls.2015.00515).

- Chakraborty S. 2012.** An automated flow for directed evolution based on detection of promiscuous scaffolds using spatial and electrostatic properties of catalytic residues. *PLoS ONE* 7:e40408 DOI [10.1371/journal.pone.0040408](https://doi.org/10.1371/journal.pone.0040408).
- Chakraborty S, Britton M, Martinez-Garcia PJ, Dandekar AM. 2016.** Deep RNA-Seq profile reveals biodiversity, plant–microbe interactions and a large family of NBS-LRR resistance genes in walnut (*Juglans regia*) tissues. *AMB Express* 6:12 DOI [10.1186/s13568-016-0182-3](https://doi.org/10.1186/s13568-016-0182-3).
- Chakraborty S, Minda R, Salaye L, Bhattacharjee SK, Rao BJ. 2011.** Active site detection by spatial conformity and electrostatic analysis—unravelling a proteolytic function in shrimp alkaline phosphatase. *PLoS ONE* 6:e28470 DOI [10.1371/journal.pone.0028470](https://doi.org/10.1371/journal.pone.0028470).
- Chakraborty S, Minda R, Salaye L, Dandekar AM, Bhattacharjee SK, Rao BJ. 2013.** Promiscuity-based enzyme selection for rational directed evolution experiments. *Methods in Molecular Biology* 978:205–216 DOI [10.1007/978-1-62703-293-3_15](https://doi.org/10.1007/978-1-62703-293-3_15).
- Chakraborty S, Rao BJ. 2012.** A measure of the promiscuity of proteins and characteristics of residues in the vicinity of the catalytic site that regulate promiscuity. *PLoS ONE* 7:e32011 DOI [10.1371/journal.pone.0032011](https://doi.org/10.1371/journal.pone.0032011).
- Champigny MJ, Isaacs M, Carella P, Faubert J, Fobert PR, Cameron RK. 2013.** Long distance movement of DIR1 and investigation of the role of DIR1-like during systemic acquired resistance in *Arabidopsis*. *Frontiers in Plant Science* 4:230 DOI [10.3389/fpls.2013.00230](https://doi.org/10.3389/fpls.2013.00230).
- Chatterjee S, Almeida RP, Lindow S. 2008.** Living in two worlds: the plant and insect lifestyles of *Xylella fastidiosa*. *Annual Review of Phytopathology* 46:243–271 DOI [10.1146/annurev.phyto.45.062806.094342](https://doi.org/10.1146/annurev.phyto.45.062806.094342).
- Choi H, Fermin D, Nesvizhskii AI. 2008.** Significance analysis of spectral count data in label-free shotgun proteomics. *Molecular & Cellular Proteomics* 7:2373–2385 DOI [10.1074/mcp.M800203-MCP200](https://doi.org/10.1074/mcp.M800203-MCP200).
- Copley SD. 2003.** Enzymes with extra talents: moonlighting functions and catalytic promiscuity. *Current Opinion in Chemical Biology* 7:265–272 DOI [10.1016/S1367-5931\(03\)00032-2](https://doi.org/10.1016/S1367-5931(03)00032-2).
- Dafoe NJ, Constabel CP. 2009.** Proteomic analysis of hybrid poplar xylem sap. *Phytochemistry* 70(7):856–863 DOI [10.1016/j.phytochem.2009.04.016](https://doi.org/10.1016/j.phytochem.2009.04.016).
- Dandekar AM, Gouran H, Ibanez AM, Uratsu SL, Agüero CB, McFarland S, Borhani Y, Feldstein PA, Bruening G, Nascimento R, Goulart LR, Pardington PE, Chaudhary A, Norvell M, Civerolo E, Gupta G. 2012.** An engineered innate immune defense protects grapevines from Pierce disease. *Proceedings of the National Academy of Sciences of the United States of America* 109:3721–3725 DOI [10.1073/pnas.1116027109](https://doi.org/10.1073/pnas.1116027109).
- David R, Itzhaki H, Ginzberg I, Gafni Y, Galili G, Kapulnik Y. 1998.** Suppression of tobacco basic chitinase gene expression in response to colonization by the arbuscular mycorrhizal fungus *Glomus intraradices*. *Molecular Plant-Microbe Interactions* 11:489–497 DOI [10.1094/MPMI.1998.11.6.489](https://doi.org/10.1094/MPMI.1998.11.6.489).

- De Bernonville TD, Albenne C, Arlat M, Hoffmann L, Lauber L, Jamet E. 2014.** Xylem sap proteomics. *Methods in Molecular Biology* **1072**:391–405
DOI [10.1007/978-1-62703-631-3_28](https://doi.org/10.1007/978-1-62703-631-3_28).
- Djordjevic MA, Oakes M, Li DX, Hwang CH, Hocart CH, Gresshoff PM. 2007.** The glycine max xylem sap and apoplast proteome. *Journal of Proteome Research* **6(9)**:3771–3779.
- Dolinsky TJ, Nielsen JE, McCammon JA, Baker NA. 2004.** PDB2PQR: an automated pipeline for the setup of Poisson–Boltzmann electrostatics calculations. *Nucleic Acids Research* **32**:W665–W667 DOI [10.1093/nar/gkh381](https://doi.org/10.1093/nar/gkh381).
- Emanuelsson O, Brunak S, Von Heijne G, Nielsen H. 2007.** Locating proteins in the cell using TargetP, SignalP and related tools. *Nature Protocols* **2**:953–971
DOI [10.1038/nprot.2007.131](https://doi.org/10.1038/nprot.2007.131).
- Ernst K, Kumar A, Kriseleit D, Kloos DU, Phillips MS, Ganai MW. 2002.** The broad-spectrum potato cyst nematode resistance gene (Hero) from tomato is the only member of a large gene family of NBS-LRR genes with an unusual amino acid repeat in the LRR region. *The Plant Journal* **31**:127–136
DOI [10.1046/j.1365-313X.2002.01341.x](https://doi.org/10.1046/j.1365-313X.2002.01341.x).
- Fenyo D, Beavis RC. 2003.** A method for assessing the statistical significance of mass spectrometry-based protein identifications using general scoring schemes. *Analytical Chemistry* **75**:768–774 DOI [10.1021/ac0258709](https://doi.org/10.1021/ac0258709).
- Floerl S, Druebert C, Majcherczyk A, Karlovsky P, Kues U, Polle A. 2008.** Defence reactions in the apoplastic proteome of oilseed rape (*Brassica napus* var. *napus*) attenuate *Verticillium longisporum* growth but not disease symptoms. *BMC Plant Biology* **8**:129 DOI [10.1186/1471-2229-8-129](https://doi.org/10.1186/1471-2229-8-129).
- Funkhouser JD, Aronson Jr NN. 2007.** Chitinase family GH18: evolutionary insights from the genomic history of a diverse protein family. *BMC Evolutionary Biology* **7**:96
DOI [10.1186/1471-2148-7-96](https://doi.org/10.1186/1471-2148-7-96).
- Gawehns F, Ma L, Bruning O, Houterman PM, Boeren S, Cornelissen BJC, Rep M, Takken FLW. 2015.** The effector repertoire of *Fusarium oxysporum* determines the tomato xylem proteome composition following infection. *Frontiers in Plant Science* **6**:967 DOI [10.3389/fpls.2015.00967](https://doi.org/10.3389/fpls.2015.00967).
- Gherardini PF, Wass MN, Helmer-Citterich M, Sternberg MJ. 2007.** Convergent evolution of enzyme active sites is not a rare phenomenon. *Journal of Molecular Biology* **372**:817–845 DOI [10.1016/j.jmb.2007.06.017](https://doi.org/10.1016/j.jmb.2007.06.017).
- Gorg A, Obermaier C, Boguth G, Harder A, Scheibe B, Wildgruber R, Weiss W. 2000.** The current state of two-dimensional electrophoresis with immobilized pH gradients. *Electrophoresis* **21**:1037–1053
DOI [10.1002/\(SICI\)1522-2683\(20000401\)21:6<1037::AID-ELPS1037>3.0.CO;2-V](https://doi.org/10.1002/(SICI)1522-2683(20000401)21:6<1037::AID-ELPS1037>3.0.CO;2-V).
- Gygi SP, Rochon Y, Franza BR, Aebersold R. 1999.** Correlation between protein and mRNA abundance in yeast. *Molecular and Cellular Biology* **19**:1720–1730
DOI [10.1128/MCB.19.3.1720](https://doi.org/10.1128/MCB.19.3.1720).

- Hamid R, Khan MA, Ahmad M, Ahmad MM, Abdin MZ, Musarrat J, Javed S. 2013.** Chitinases: an update. *Journal of Pharmacy and Bioallied Sciences* 5:21–29 DOI [10.4103/0975-7406.106559](https://doi.org/10.4103/0975-7406.106559).
- Han Y, Chen Y, Yin S, Zhang M, Wang W. 2014.** Over-expression of TaEXPB23, a wheat expansin gene, improves oxidative stress tolerance in transgenic tobacco plants. *Journal of Plant Physiology* 173C:62–71 DOI [10.1016/j.jplph.2014.09.007](https://doi.org/10.1016/j.jplph.2014.09.007).
- Hayashi N, Inoue H, Kato T, Funao T, Shiota M, Shimizu T, Kanamori H, Yamane H, Hayano-Saito Y, Matsumoto T, Yano M, Takatsuji H. 2010.** Durable panicle blast-resistance gene *Pb1* encodes an atypical CC-NBS-LRR protein and was generated by acquiring a promoter through local genome duplication. *The Plant Journal* 64:498–510 DOI [10.1111/j.1365-313X.2010.04348.x](https://doi.org/10.1111/j.1365-313X.2010.04348.x).
- Hilaire E, Young SA, Willard LH, McGee JD, Sweat T, Chittoor JM, Guikema JA, Leach JE. 2001.** Vascular defense responses in rice: peroxidase accumulation in xylem parenchyma cells and xylem wall thickening. *Molecular Plant-Microbe Interactions* 14:1411–1419 DOI [10.1094/MPMI.2001.14.12.1411](https://doi.org/10.1094/MPMI.2001.14.12.1411).
- Houterman PM, Speijer D, Dekker HL, CG DEK, Cornelissen BJ, Rep M. 2007.** The mixed xylem sap proteome of *Fusarium oxysporum*-infected tomato plants. *Molecular Plant Pathology* 8:215–221 DOI [10.1111/j.1364-3703.2007.00384.x](https://doi.org/10.1111/j.1364-3703.2007.00384.x).
- Hu J, Rampitsch C, Bykova NV. 2015.** Advances in plant proteomics toward improvement of crop productivity and stress resistance. *Frontiers in Plant Science* 6:209 DOI [10.3389/fpls.2015.00209](https://doi.org/10.3389/fpls.2015.00209).
- Jensen RA. 1976.** Enzyme recruitment in evolution of new function. *Annual Review of Microbiology* 30:409–425 DOI [10.1146/annurev.mi.30.100176.002205](https://doi.org/10.1146/annurev.mi.30.100176.002205).
- Katam R, Chibanguza K, Latinwo LM, Smith D. 2015.** Proteome biomarkers in xylem reveal pierce's disease tolerance in grape. *Journal of Proteomics & Bioinformatics* 8:217–224.
- Kehr J, Buhtz A, Giavalisco P. 2005.** Analysis of xylem sap proteins from *Brassica napus*. *BMC Plant Biology* 5:11.
- Keller A, Nesvizhskii AI, Kolker E, Aebersold R. 2002.** Empirical statistical model to estimate the accuracy of peptide identifications made by MS/MS and database search. *Analytical Chemistry* 74:5383–5392 DOI [10.1021/ac025747h](https://doi.org/10.1021/ac025747h).
- Khersonsky O, Tawfik DS. 2010.** Enzyme promiscuity: a mechanistic and evolutionary perspective. *Annual Review of Biochemistry* 79:471–505 DOI [10.1146/annurev-biochem-030409-143718](https://doi.org/10.1146/annurev-biochem-030409-143718).
- Kleywegt GJ. 1999.** Recognition of spatial motifs in protein structures. *Journal of Molecular Biology* 285:1887–1897 DOI [10.1006/jmbi.1998.2393](https://doi.org/10.1006/jmbi.1998.2393).
- Konc J, Janezic D. 2010.** ProBiS algorithm for detection of structurally similar protein binding sites by local structural alignment. *Bioinformatics* 26:1160–1168 DOI [10.1093/bioinformatics/btq100](https://doi.org/10.1093/bioinformatics/btq100).
- Ligat L, Lauber E, Albenne C, San Clemente H, Valot B, Zivy M, Pont-Lezica R, Arlat M, Jamet E. 2011.** Analysis of the xylem sap proteome of *Brassica oleracea* reveals a high content in secreted proteins. *Proteomics* 11(9):1798–1813 DOI [10.1002/pmic.201000781](https://doi.org/10.1002/pmic.201000781).

- Lin H, Doddapaneni H, Takahashi Y, Walker MA. 2007.** Comparative analysis of ESTs involved in grape responses to *Xylella fastidiosa* infection. *BMC Plant Biology* 7:8 DOI 10.1186/1471-2229-7-8.
- Liu JJ, Sturrock R, Ekramoddoullah AK. 2010.** The superfamily of thaumatin-like proteins: its origin, evolution, and expression towards biological function. *Plant Cell Reports* 29:419–436 DOI 10.1007/s00299-010-0826-8.
- Lu S, Faris JD, Sherwood R, Edwards MC. 2013.** Dimerization and protease resistance: new insight into the function of PR-1. *Journal of Plant Physiology* 170:105–110 DOI 10.1016/j.jplph.2012.08.006.
- Martinez-Caballero S, Cano-Sanchez P, Mares-Mejia I, Diaz-Sanchez AG, Macias-Rubalcava ML, Hermoso JA, Rodriguez-Romero A. 2014.** Comparative study of two GH19 chitinase-like proteins from *Hevea brasiliensis*, one exhibiting a novel carbohydrate-binding domain. *FEBS Journal* 281:4535–4554 DOI 10.1111/febs.12962.
- Mauch F, Mauch-Mani B, Boller T. 1988.** Antifungal Hydrolases in Pea Tissue : II. Inhibition of Fungal Growth by Combinations of Chitinase and beta-1, 3-Glucanase. *Plant Physiology* 88:936–942 DOI 10.1104/pp.88.3.936.
- McElrone AJ, Seraldi JL, Forseth IN. 2003.** Interactive effects of water stress and xylem-limited bacterial infection on the water relations of a host vine. *Journal of Experimental Botany* 54:419–430 DOI 10.1093/jxb/erg046.
- Metzner R, Schneider HU, Breuer U, Thorpe MR, Schurr U, Schroeder WH. 2010.** Tracing cationic nutrients from xylem into stem tissue of French bean by stable isotope tracers and cryo-secondary ion mass spectrometry. *Plant Physiology* 152:1030–1043 DOI 10.1104/pp.109.143776.
- Mi H, Muruganujan A, Casagrande JT, Thomas PD. 2013.** Large-scale gene function analysis with the PANTHER classification system. *Nature Protocols* 8:1551–1566 DOI 10.1038/nprot.2013.092.
- Moy P, Qutob D, Chapman BP, Atkinson I, Gijzen M. 2004.** Patterns of gene expression upon infection of soybean plants by *Phytophthora sojae*. *Molecular Plant-Microbe Interactions* 17:1051–1062 DOI 10.1094/MPMI.2004.17.10.1051.
- Nanjo Y, Nakamura T, Komatsu S. 2013.** Identification of indicator proteins associated with flooding injury in soybean seedlings using label-free quantitative proteomics. *Journal of Proteome Research* 12:4785–4798 DOI 10.1021/pr4002349.
- Nersissian AM, Immoos C, Hill MG, Hart PJ, Williams G, Herrmann RG, Valentine JS. 1998.** Uclacyanins, stellacyanins, and plantacyanins are distinct subfamilies of phytocyanins: plant-specific mononuclear blue copper proteins. *Protein Science* 7:1915–1929 DOI 10.1002/pro.5560070907.
- Nesvizhskii AI, Keller A, Kolker E, Aebersold R. 2003.** A statistical model for identifying proteins by tandem mass spectrometry. *Analytical Chemistry* 75:4646–4658 DOI 10.1021/ac0341261.

- Ng EK, Chong WW, Jin H, Lam EK, Shin VY, Yu J, Poon TC, Ng SS, Sung JJ. 2009. Differential expression of microRNAs in plasma of patients with colorectal cancer: a potential marker for colorectal cancer screening. *Gut* **58**:1375–1381 DOI [10.1136/gut.2008.167817](https://doi.org/10.1136/gut.2008.167817).
- Nicaise V, Roux M, Zipfel C. 2009. Recent advances in PAMP-triggered immunity against bacteria: pattern recognition receptors watch over and raise the alarm. *Plant Physiology* **150**:1638–1647 DOI [10.1104/pp.109.139709](https://doi.org/10.1104/pp.109.139709).
- Niza B, Coletta-Filho HD, Merfa MV, Takita MA, De Souza AA. 2015. Differential colonization patterns of *Xylella fastidiosa* infecting citrus genotypes. *Plant Pathology* **64**:1259–1269 DOI [10.1111/ppa.12381](https://doi.org/10.1111/ppa.12381).
- Ohnuma T, Numata T, Osawa T, Mizuhara M, Lampela O, Juffer AH, Skriver K, Fukamizo T. 2011. A class V chitinase from *Arabidopsis thaliana*: gene responses, enzymatic properties, and crystallographic analysis. *Planta* **234**:123–137 DOI [10.1007/s00425-011-1390-3](https://doi.org/10.1007/s00425-011-1390-3).
- Okushima Y, Koizumi N, Kusano T, Sano H. 2000. Secreted proteins of tobacco cultured BY2 cells: identification of a new member of pathogenesis-related proteins. *Plant Molecular Biology* **42**:479–488 DOI [10.1023/A:1006393326985](https://doi.org/10.1023/A:1006393326985).
- Petre B, Major I, Rouhier N, Duplessis S. 2011. Genome-wide analysis of eukaryote thaumatin-like proteins (TLPs) with an emphasis on poplar. *BMC Plant Biology* **11**:33 DOI [10.1186/1471-2229-11-33](https://doi.org/10.1186/1471-2229-11-33).
- Pu Z, Ino Y, Kimura Y, Tago A, Shimizu M, Natsume S, Sano Y, Fujimoto R, Kaneko K, Shea DJ, Fukai E, Fujii S-I, Hirano H, Okazaki K. 2016. Changes in the proteome of xylem sap in *Brassica oleracea* in response to *Fusarium oxysporum* stress. *Frontiers in Plant Science* **7**:31 DOI [10.3389/fpls.2016.00031](https://doi.org/10.3389/fpls.2016.00031).
- Rep M, Dekker HL, Vossen JH, De Boer AD, Houterman PM, Speijer D, Back JW, De Koster CG, Cornelissen BJ. 2002. Mass spectrometric identification of isoforms of PR proteins in xylem sap of fungus-infected tomato. *Plant Physiology* **130**:904–917 DOI [10.1104/pp.007427](https://doi.org/10.1104/pp.007427).
- Rice P, Longden I, Bleasby A. 2000. EMBOSS: the European Molecular Biology Open Software Suite. *Trends in Genetics* **16**:276–277 DOI [10.1016/S0168-9525\(00\)02024-2](https://doi.org/10.1016/S0168-9525(00)02024-2).
- Rodrigues CM, De Souza AA, Takita MA, Kishi LT, Machado MA. 2013. RNA-Seq analysis of *Citrus reticulata* in the early stages of *Xylella fastidiosa* infection reveals auxin-related genes as a defense response. *BMC Genomics* **14**:676 DOI [10.1186/1471-2164-14-676](https://doi.org/10.1186/1471-2164-14-676).
- Safavi K, Zareie R, Tabatabaei BES. 2012. Constitutive expression of thaumatin-like protein (TLP-3) in transgenic tobacco plants leads to enhance resistance to *Alternaria alternata*. *Archives of Phytopathology and Plant Protection* **45**:161–169 DOI [10.1080/03235408.2010.507947](https://doi.org/10.1080/03235408.2010.507947).
- Sanchez-Rangel D, Sanchez-Nieto S, Plasencia J. 2012. Fumonisin B1, a toxin produced by *Fusarium verticillioides*, modulates maize beta-1, 3-glucanase activities involved in defense response. *Planta* **235**:965–978 DOI [10.1007/s00425-011-1555-0](https://doi.org/10.1007/s00425-011-1555-0).

- Sela-Buurlage MB, Ponstein AS, Bres-Vloemans SA, Melchers LS, Van Den Elzen P, Cornelissen B. 1993.** Only specific tobacco (*Nicotiana tabacum*) chitinases and [beta]-1, 3-glucanases exhibit antifungal activity. *Plant Physiology* **101**:857–863.
- Shi X, Bi J, Morse JG, Toscano NC, Cooksey DA. 2010.** Differential expression of genes of *Xylella fastidiosa* in xylem fluid of citrus and grapevine. *FEMS Microbiology Letters* **304**:82–88 DOI [10.1111/j.1574-6968.2009.01885.x](https://doi.org/10.1111/j.1574-6968.2009.01885.x).
- Shinshi H, Wenzler H, Neuhaus JM, Felix G, Hofsteenge J, Meins F. 1988.** Evidence for N- and C-terminal processing of a plant defense-related enzyme: Primary structure of tobacco prepro-beta-1, 3-glucanase. *Proceedings of the National Academy of Sciences of the United States of America* **85**:5541–5545 DOI [10.1073/pnas.85.15.5541](https://doi.org/10.1073/pnas.85.15.5541).
- Shiu SH, Bleecker AB. 2001.** Receptor-like kinases from *Arabidopsis* form a monophyletic gene family related to animal receptor kinases. *Proceedings of the National Academy of Sciences of the United States of America* **98**:10763–10768 DOI [10.1073/pnas.181141598](https://doi.org/10.1073/pnas.181141598).
- Stajich JE, Block D, Boulez K, Brenner SE, Chervitz SA, Dagdigian C, Fuellen G, Gilbert JG, Korf I, Lapp H, Lehvaslaiho H, Matsalla C, Mungall CJ, Osborne BI, Pocock MR, Schattner P, Senger M, Stein LD, Stupka E, Wilkinson MD, Birney E. 2002.** The Bioperl toolkit: perl modules for the life sciences. *Genome Research* **12**:1611–1618 DOI [10.1101/gr.361602](https://doi.org/10.1101/gr.361602).
- Subramanian S, Cho UH, Keyes C, Yu O. 2009.** Distinct changes in soybean xylem sap proteome in response to pathogenic and symbiotic microbe interactions. *BMC Plant Biology* **9**:119 DOI [10.1186/1471-2229-9-119](https://doi.org/10.1186/1471-2229-9-119).
- Sudisha J, Sharathchandra R, Amruthesh K, Kumar A, Shetty HS. 2012.** Pathogenesis related proteins in plant defense response. In: *Plant defence: biological control*. New York: Springer, 379–403.
- Su YC, Xu LP, Xue BT, Wu QB, Guo JL, Wu LG, Que YX. 2013.** Molecular cloning and characterization of two pathogenesis-related beta-1, 3-glucanase genes ScGluA1 and ScGluD1 from sugarcane infected by *Sporisorium scitamineum*. *Plant Cell Reports* **32**:1503–1519 DOI [10.1007/s00299-013-1463-9](https://doi.org/10.1007/s00299-013-1463-9).
- Van Loon LC, Rep M, Pieterse CM. 2006.** Significance of inducible defense-related proteins in infected plants. *Annual Review of Phytopathology* **44**:135–162 DOI [10.1146/annurev.phyto.44.070505.143425](https://doi.org/10.1146/annurev.phyto.44.070505.143425).
- Varghese JN, Hrmova M, Fincher GB. 1999.** Three-dimensional structure of a barley beta-D-glucan exohydrolase, a family 3 glycosyl hydrolase. *Structure* **7**:179–190 DOI [10.1016/S0969-2126\(99\)80024-0](https://doi.org/10.1016/S0969-2126(99)80024-0).
- Wallis CM, Chen J. 2012.** Grapevine phenolic compounds in xylem sap and tissues are significantly altered during infection by *Xylella fastidiosa*. *Phytopathology* **102**:816–826 DOI [10.1094/PHYTO-04-12-0074-R](https://doi.org/10.1094/PHYTO-04-12-0074-R).
- Wang Z, Gerstein M, Snyder M. 2009.** RNA-Seq: a revolutionary tool for transcriptomics. *Nature Reviews Genetics* **10**:57–63 DOI [10.1038/nrg2484](https://doi.org/10.1038/nrg2484).
- Witzel K, Weidner A, Surabhi GK, Borner A, Mock HP. 2009.** Salt stress-induced alterations in the root proteome of barley genotypes with contrasting response towards salinity. *Journal of Experimental Botany* **60**:3545–3557 DOI [10.1093/jxb/erp198](https://doi.org/10.1093/jxb/erp198).

- Xie YR, Raruang Y, Chen ZY, Brown RL, Cleveland TE. 2015. ZmGns, a maize class I beta-1, 3-glucanase, is induced by biotic stresses and possesses strong antimicrobial activity. *Journal of Integrative Plant Biology* 57:271–283 DOI 10.1111/jipb.12286.
- Yang Y, He M, Zhu Z, Li S, Xu Y, Zhang C, Singer SD, Wang Y. 2012. Identification of the dehydrin gene family from grapevine species and analysis of their responsiveness to various forms of abiotic and biotic stress. *BMC Plant Biology* 12:140 DOI 10.1186/1471-2229-12-140.
- Yang L, Lin H, Takahashi Y, Chen F, Walker MA, Civerolo EL. 2011. Proteomic analysis of grapevine stem in response to *Xylella fastidiosa* inoculation. *Physiological and Molecular Plant Pathology* 75:90–99 DOI 10.1016/j.pmpp.2010.11.002.
- Ye Y, Godzik A. 2004. FATCAT: a web server for flexible structure comparison and structure similarity searching. *Nucleic Acids Research* 32:W582–W585 DOI 10.1093/nar/gkh430.
- Yoshida S, Ito M, Nishida I, Watanabe A. 2001. Isolation and RNA gel blot analysis of genes that could serve as potential molecular markers for leaf senescence in *Arabidopsis thaliana*. *Plant and Cell Physiology* 42:170–178 DOI 10.1093/pcp/pce021.
- Zhang J, Li W, Xiang T, Liu Z, Laluk K, Ding X, Zou Y, Gao M, Zhang X, Chen S, Mengiste T, Zhang Y, Zhou JM. 2010. Receptor-like cytoplasmic kinases integrate signaling from multiple plant immune receptors and are targeted by a *Pseudomonas syringae* effector. *Cell Host Microbe* 7:290–301 DOI 10.1016/j.chom.2010.03.007.
- Zhang Z, Xin W, Wang S, Zhang X, Dai H, Sun R, Frazier T, Zhang B, Wang Q. 2015b. Xylem sap in cotton contains proteins that contribute to environmental stress response and cell wall development. *Functional and Integrative Genomics* 15:17–26 DOI 10.1007/s10142-014-0395-y.
- Zhang W, Yan H, Chen W, Liu J, Jiang C, Jiang H, Zhu S, Cheng B. 2014. Genome-wide identification and characterization of maize expansin genes expressed in endosperm. *Molecular Genetics and Genomics* 289:1061–1074 DOI 10.1007/s00438-014-0867-8.
- Zhang YT, Zhang YL, Chen SX, Yin GH, Yang ZZ, Lee S, Liu CG, Zhao DD, Ma YK, Song FQ, Bennett JW, Yang FS. 2015a. Proteomics of methyl jasmonate induced defense response in maize leaves against Asian corn borer. *BMC Genomics* 16:224 DOI 10.1186/s12864-015-1363-1.
- Zhu J, Sova P, Xu Q, Dombek KM, Xu EY, Vu H, Tu Z, Brem RB, Bumgarner RE, Schadt EE. 2012. Stitching together multiple data dimensions reveals interacting metabolomic and transcriptomic networks that modulate cell regulation. *PLoS Biology* 10:e1001301 DOI 10.1371/journal.pbio.1001301.